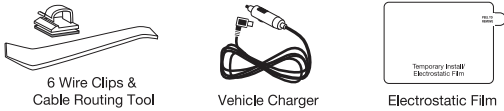
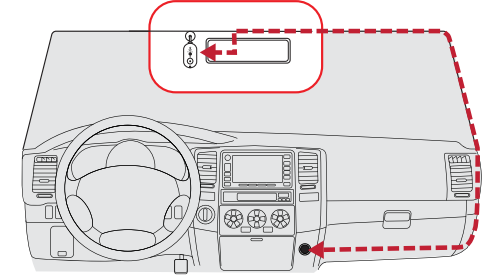


Windshield Mounting



- Find an area on your vehicle's windshield that is centrally located and close to the top of the windshield. Make sure the mounting area on the windshield is clean.
(Optional: Place the included electrostatic film on the desired location for a semi-permanent install).
- Plug the power cable into the dash cam and then route the power cable along the headliner using the included tool and cable routing clips as needed.

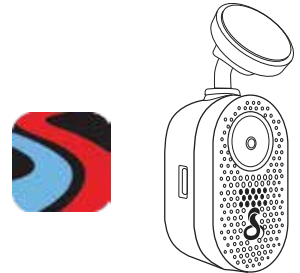
Dash cam automatically turns on and begins recording



- Blue LED lights up when the dash cam is powered up.
- Red LED light flashes when the dash cam is recording.
- Purple LED light flashes when the dash cam is recording a locked video.

LED Status Light

⚠ Set the dash cam's date and time automatically by connecting to the Drive Smarter app



- Set the Date/Time
- View Videos
- Format MicroSD Card
- Update Firmware

Camera Tips

- Your dash cam features continuous loop recording, which deletes your oldest videos on the microSD card to make space for new recordings. Save your favorite clips from being overwritten by pressing the Action Button.
 - Press and hold the Action Button continuously for 5 seconds to start formatting the microSD card. The dash cam will begin recording again once formatting is complete.
 - The dash cam may occasionally prompt you with a voice announcement to format your microSD card. This is done to ensure continuous recording operation, but this action will delete your saved footage. Before formatting, download and save your favorite clips using the Drive Smarter® app or by connecting the dash cam to your PC with the included data cable.
 - Parking Mode requires a hardwire connection to the vehicle's battery or OBDII port to power the dash cam while the vehicle is off (Hardwire Kit available on Cobra.com).
 - Parking Live View requires an internet connection for the dash cam (in-vehicle hotspot or nearby WiFi access point) in order to stream a live feed from the dash cam to the account holder's Drive Smarter app. Please consult the owner's manual for more details.
- ⚠ To purchase or upgrade an microSD card, please visit Cobra.com for a list of compatible cards.**

Compact Witness, Clear Evidence

Quad HD | Low-Profile Design



QUICK START GUIDE

Your Cobra® SC 120 pairs with the **Drive Smarter®** app.

DRIVE SMARTER® APP FEATURES:

360 Alerts
Radar, speed, and red light camera alerts

Trip Planning
Plan routes and easily view upcoming turns

Cloud Video Management
Manage and share footage from your phone

Over-The-Air Updates
Update your dash cam with the latest firmware and features



Download

DRIVE SMARTER®

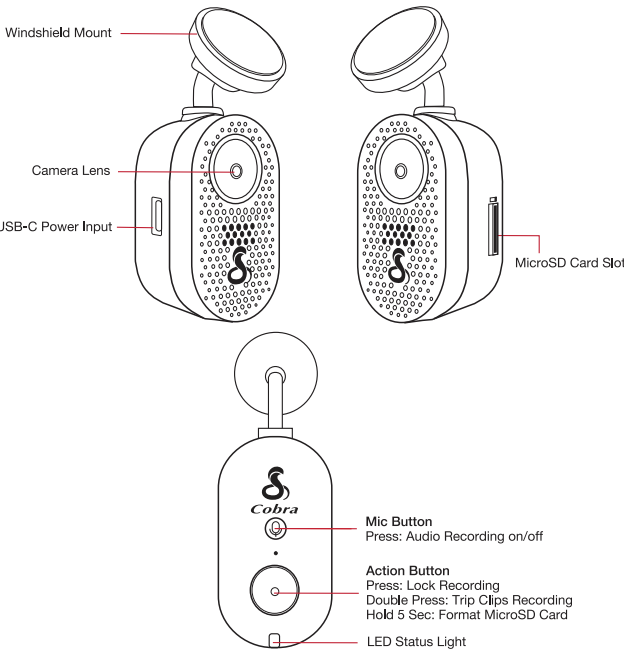
Works with
Apple CarPlay

Works with
Android Auto

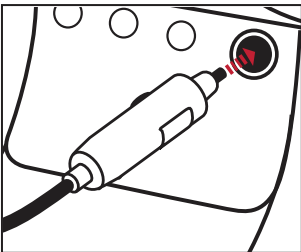
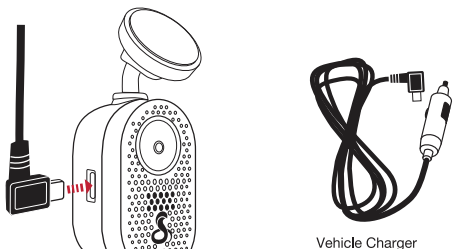
Full manual available at: www.cobra.com/manuals

©2024 Cobra Electronics Corporation. Cobra and the snake design are proprietary trademarks of Cobra Electronics Corporation, USA. Other trademarks and trade names are those of their respective owners. Cobra Electronics Corporation™ is a trademark of Cobra Electronics Corporation, USA. Drive Smarter® is a registered trademark of Cedar Electronics Corporation. Apple and the Apple logo are trademarks of Apple Inc. Registered in the U.S. and other countries. App Store is a service mark of Apple Inc. Android and Android Auto are trademarks of Google LLC. Compatible Android phone and compatible active data plan required. The Bluetooth® word mark and logos are registered trademarks of Bluetooth SIG, Inc. and any use of such marks by Cobra Electronics Corporation is under license. Features, Specifications and prices subject to change without notice. The Driver Awareness Alert display feature is subject to US Patent Numbers 8,842,004 and 8,970,422 and additional pending US Patent Applications.

SC 120 Features



Powering Up the SC 120



Connect the USB-C cable into the dash cam and plug the power adapter into the vehicle's 12V port

Drive Smarter® App



- Download the Drive Smarter® app from the App Store or from Google Play to connect your SC 120.
- A connection to the Drive Smarter® app is required in order to access features like Gallery View, Mayday Alert, Parking Mode Notifications, and Live View.



What's Included

