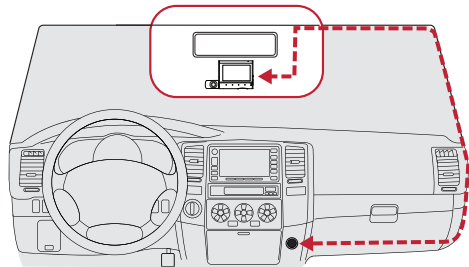


## Windshield Mounting



6 Wire Clips &  
Cable Routing Tool

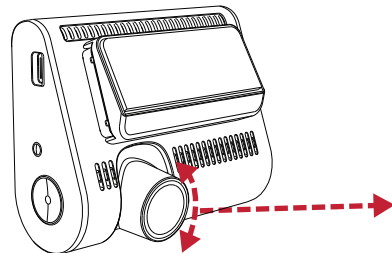


Vehicle Charger

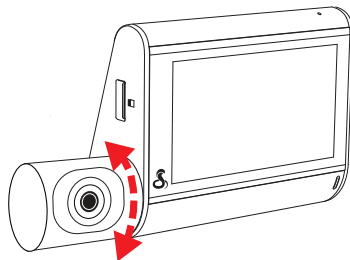


Electrostatic Film

- Find an area on your vehicle's windshield that is centrally located and close to the top of the windshield. Make sure the mounting area on the windshield is clean. The dash cam should be mounted so the display is easily visible to the driver.  
(Optional: Place the included electrostatic film on the desired location for a semi-permanent install).
- Plug the power cable into the dash cam and then route the power cable along the headliner using the included tool and cable routing clips as needed.



Rotate front camera lens so that it is parallel with the road.



Rotate the interior cam so that it captures a view of the driver and passengers.

## Camera Tips

- Your dash cam features continuous loop recording, which deletes your oldest videos on the included SD card to make space for new recordings. Save your favorite clips from being overwritten by pressing the Action Button.
- If you need to format the SD card, please do so in the camera itself within the settings menu. Do not format the SD card on your PC.
- The dash cam may occasionally prompt you to format your SD card. This is done to ensure continuous recording operation, but this action will delete your saved footage. Before formatting, download and save your favorite clips using the Drive Smarter® app or by connecting the camera to your PC with the included data cable.
- Parking Mode requires a hardwire connection to the vehicle's battery or OBD-II port to power the camera while the vehicle is off (Hardwire Kit available on Cobra.com).
- Parking Live View requires an internet connection for the camera (in-vehicle hotspot or nearby WiFi access point) in order to stream a live feed from the camera to the account holder's Drive Smarter app. Please consult the owner's manual for more details.

**⚠** If upgrading your SD card, please visit [Cobra.com](https://Cobra.com) for a list of compatible cards.

**Cobra**

**SC 220C**

## Protection, Inside and Out

Quad HD | 360 Alerts | Interior Cam



## QUICK START GUIDE

# Your Cobra® SC 220 pairs with the **Drive Smarter®** app.

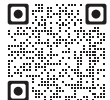
## DRIVE SMARTER® APP FEATURES:

**360 Alerts**  
Radar, speed, and red light camera alerts

**Heads-Up Navigation**  
Plan routes and easily view upcoming turns

**Cloud Video Management**  
Manage and share footage from your phone

**Over-The-Air Updates**  
Update your camera with the latest firmware and features



Download  
**DRIVE SMARTER®**



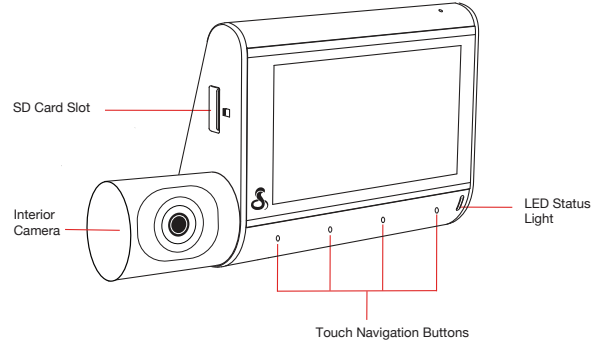
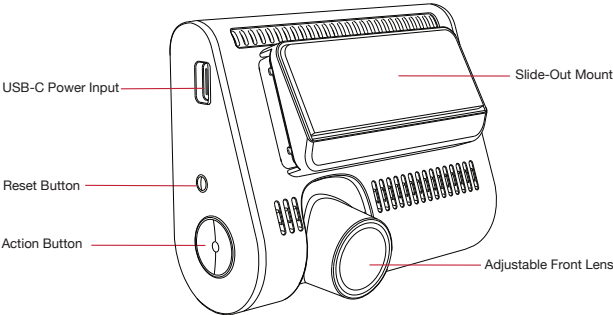
Full manual available at: [www.cobra.com/manuals](http://www.cobra.com/manuals)

FCC ID:BBOSC220, IC#906A-SC220, HVIN: SC220 can be found on device display by:

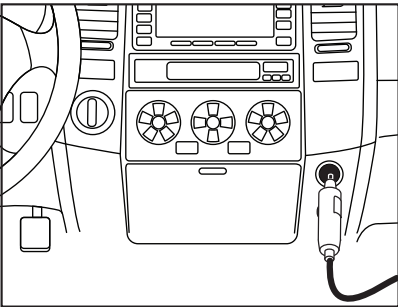
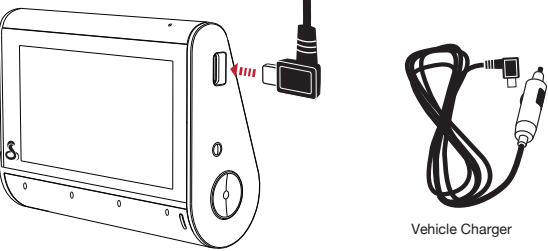
1. Power on the device.
2. Select the Settings icon on the bottom right.
3. Navigate to and select the About menu item.

©2024 Cobra Electronics Corporation. Cobra and the snake design are proprietary trademarks of Cobra Electronics Corporation, USA. Other trademarks and trade names are those of their respective owners. Cobra Electronics Corporation™ is a trademark of Cobra Electronics Corporation, USA. Drive Smarter® is a registered trademark of Cedar Electronics Corporation. Apple and the Apple logo are trademarks of Apple Inc. and other countries. App Store is a service mark of Apple Inc. Android and Android Auto are trademarks of Google LLC. Compatible Android phone and compatible active data plan required. The Bluetooth® word mark and logos are registered trademarks of Bluetooth SIG, Inc. and any use of such marks by Cobra Electronics Corporation is under license. Features, Specifications and prices subject to change without notice. The Driver Awareness Alert display feature is subject to US Patent Numbers 8,842,004 and 8,970,422 and additional pending US Patent Applications.

## SC 220C Features

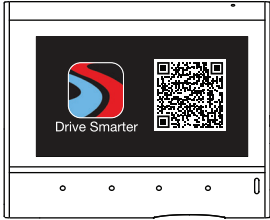


## Powering Up the SC 220C



Connect the USB-C cable into the dash cam and plug the power adapter into the vehicle's 12V port

## Drive Smarter® App



- Once the dash cam is powered on, follow the on-screen setup instructions to download and connect to the Drive Smarter® app.
- A connection to the Drive Smarter® app is required in order to access features like 360 Alerts, Mayday Alert, Parking Mode Notifications, and Live View.

## What's Included

