



# SC 220C

## OWNERS MANUAL



## Protection, Inside and Out

Quad HD | 360 Alerts | Interior Cam





## Contents

INTRODUCTION.....	3
SC 220C DASH CAM FEATURES .....	3
PRODUCT SERVICE AND SUPPORT .....	4
WHAT'S IN THE BOX .....	4
OPTIONAL ACCESSORIES – available at <a href="http://www.cobra.com">www.cobra.com</a> .....	4
HARDWARE INTERFACE .....	5
INSTALLATION .....	6
DRIVE SMARTER®.....	9
HEADS-UP NAVIGATION .....	10
VIDEO SCREEN.....	10
PARKING LIVE VIEW .....	10
TRIP CLIPS.....	10
STATUS BAR ICONS.....	11
VIDEO SETTINGS.....	12
VIDEO AND PHOTO PLAYBACK MODE.....	12
MEMORY CARD STORAGE.....	13
LOOP RECORDINGS .....	13
EMERGENCY RECORDINGS.....	13
PHOTOS.....	13
SAFETY FEATURES .....	14
GENERAL SETTINGS.....	15
CLOUD FEATURES .....	16
FIRMWARE UPDATES.....	18
SPECIFICATIONS.....	19
TROUBLESHOOTING .....	20
FAQ.....	20
LIMITED 1-YEAR WARRANTY AND TRADEMARK INFORMATION.....	21
FCC REGULATORY INFORMATION AND WARNINGS.....	22



## Introduction

Congratulations! You made the smart choice by purchasing an SC Series smart dash cam from Cobra. SC Series dash cams provide peace of mind by continuously recording the road with crystal-clear video. With advanced safety features, industry-leading video quality, and exclusive shared alerts from our network of drivers, SC dash cams are the best solution to record your ride.

### SC 220C DASH CAM FEATURES

- **Quad HD Video Resolution**  
Quad HD resolution allows you to capture crucial details such as license plate numbers
- **360 Alerts**  
Get radar, laser, red light and speed camera location from our database and radar users
- **Heads-Up Navigation**  
Plan routes in the Drive Smarter® app and easily view upcoming turns on screen
- **Two-Dash Cam Capable**  
Includes a Quad HD front dash cam and 1080P interior dash cam
- **Parking Live View**  
Enables security recording and live viewing of your dash cam footage (Hardwire kit and WiFi hotspot required)
- **Trip Clips**  
Create time-lapse videos of your drives to easily share with friends and family
- **Emergency Mayday Alert**  
Automatically alerts your designated contact in the event of a severe impact
- **Cloud Video Management**  
Manage and share footage from your phone
- **Over-The-Air Updates**  
Update your dash cam with the latest firmware and features
- **SD Card Included**
- **3" Touchscreen Display**

#### Display Interface Supports These Languages:

- English
- Spanish
- French
- German



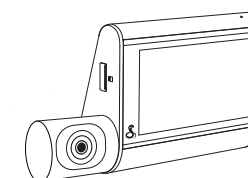
## Introduction

### PRODUCT SERVICE AND SUPPORT

For any questions about operating or installing this new Cobra product, PLEASE CONTACT COBRA FIRST...do not return this product to the retail store. The contact information for Cobra will vary depending on the country in which you purchased and utilize the product. For the latest contact information, please go to [www.cobra.com/support](http://www.cobra.com/support).

### WHAT'S IN THE BOX

- SC 220C Dash Cam
- 16GB SD Card
- Slide-Out Mount
- Cable Management Kit: 6 Wire Clips & Cable Routing Tool
- Vehicle Charger
- USB-C Data Cable
- Temporary Install Film:  
3 Electrostatic Films



SC 220C Dash Cam  
with Interior Camera



Micro SD Card



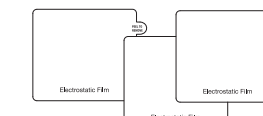
6 Wire Clips &  
Cable Routing Tool



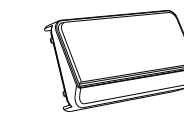
USB-C Data Cable



Vehicle Charger



3 Electrostatic Films

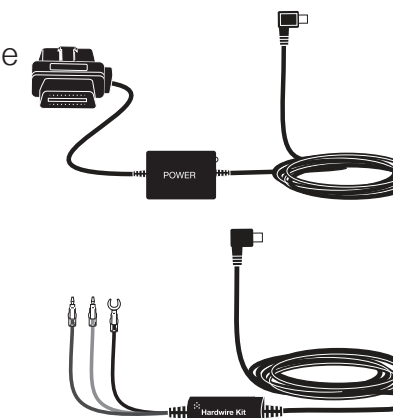


Slide-Out Mount  
(Pre-mounted on camera)

### OPTIONAL ACCESSORIES – available at [www.cobra.com](http://www.cobra.com)

Easy Install Hardwire Kit: **0010070-1** – Wires your dash cam directly into the OBD II diagnostic port for a quick and clean installation.

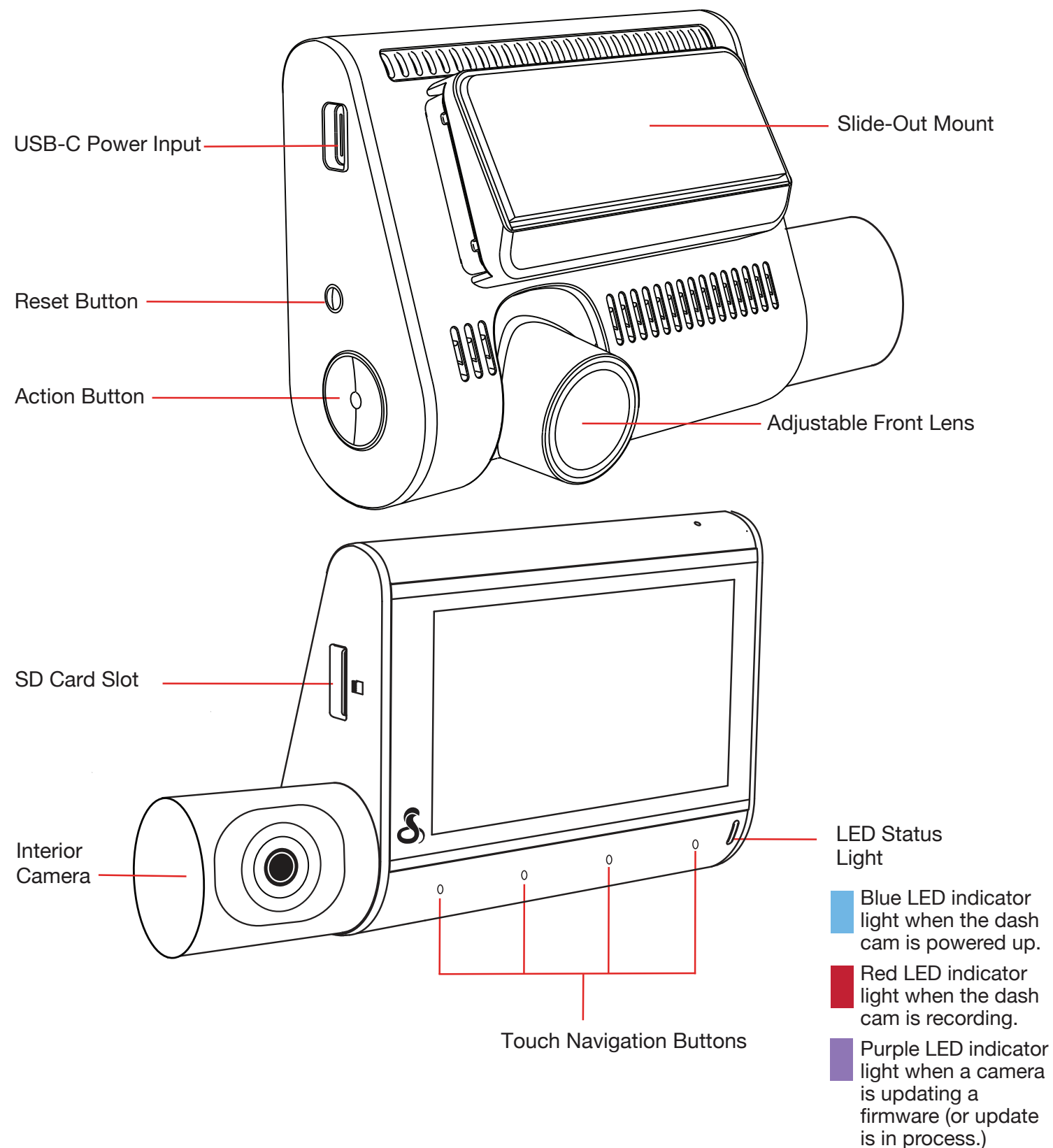
Fuse Box Hardwire Kit: **0010073-1** – Wires your dash cam directly into the vehicle's fuse box for a versatile installation.







## HARDWARE INTERFACE

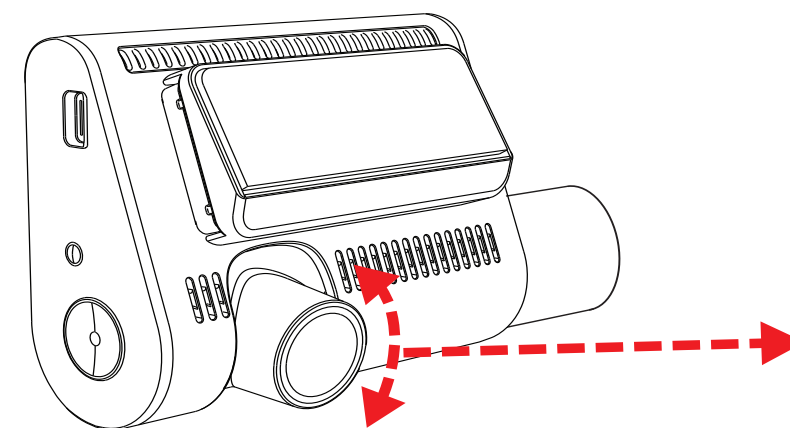
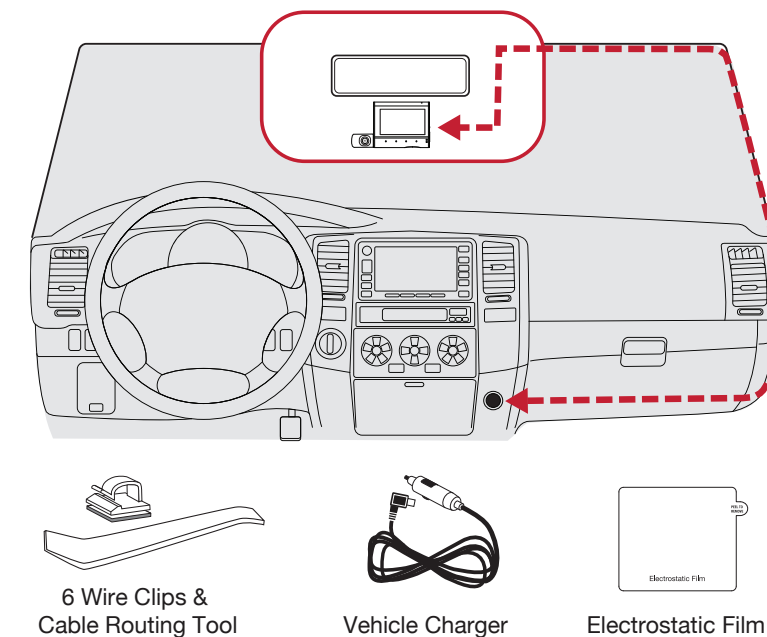


## MOUNT

Find an area on your vehicle's windshield that is centrally located and close to the top of the windshield. Make sure the mounting area on the windshield is clean. The dash cam should be mounted so the display is easily visible to the driver.

(Optional: Place the included electrostatic film on the desired location for a semi-permanent install).

Plug the power cable into the dash cam and then route the power cable along the headliner using the included tool and cable routing clips as needed.



Rotate front dash cam lens so that it is parallel with the road.



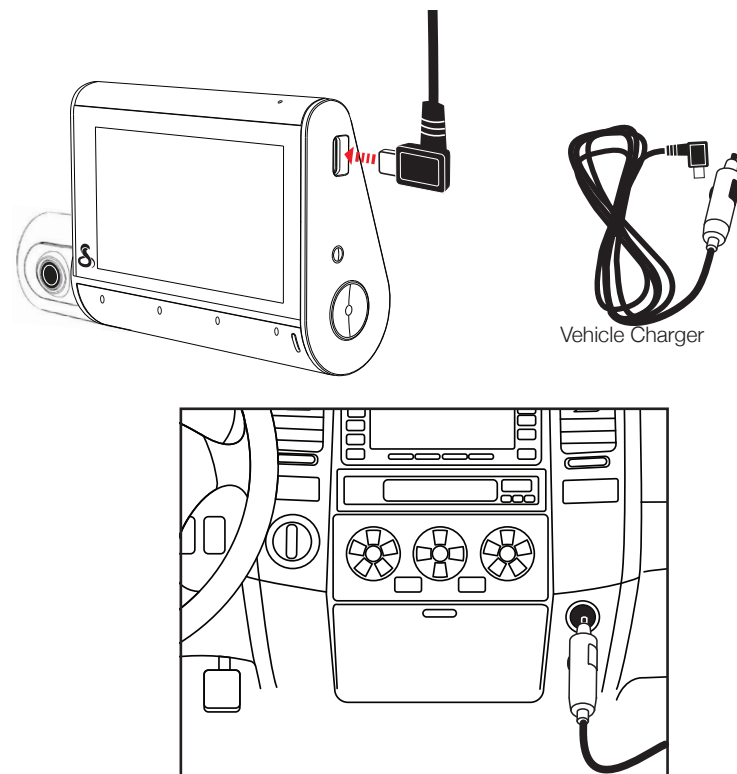


## Installation

### POWER

Plug one end of the supplied 12V vehicle power adapter into your vehicle's 12V power port and the other end into the USB-C port. The unit will automatically turn on and start recording. To manually power on the device **PRESS AND HOLD** the Action Button until the display activates.

**Note:** Hardwire Kits are available at [www.cobra.com](http://www.cobra.com) for a more permanent installation that allows for discrete routing of the power cable and recording while your vehicle is off. See page 4 for more details.



### DRIVE!

Your dash cam is designed for easy operation. Once powered on, it will immediately start loop recording. As the SD card fills up, the oldest footage is erased to make space for new recordings. To keep any important footage from being deleted, simply press the Action Button, and it will be locked.

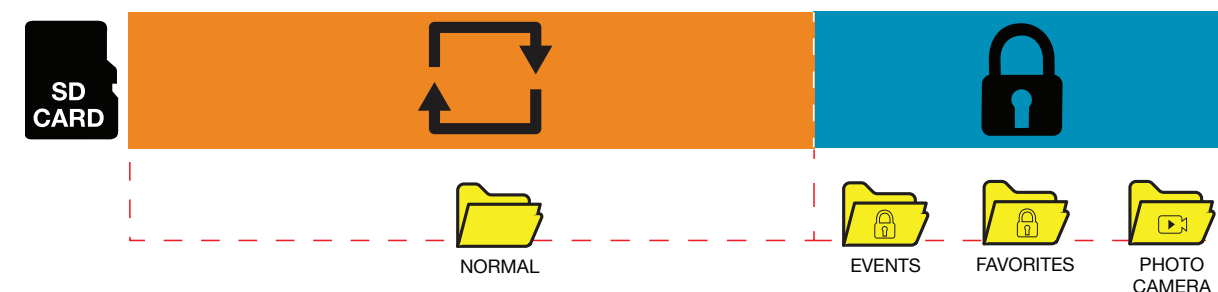


## Installation *continued*

### POWERING ON THE DEVICE

The device will power on automatically when plugged in and can also be powered by pressing the Action Button until the display activates (when connected to power).

### CONTINUOUS LOOP RECORDING



Once the SD card is full, the dash cam will continuously overwrite the oldest footage recorded with recent recordings. To protect a clip so that it will not be overwritten, press the Action Button so that the clip is moved into the locked content partition.

### EMERGENCY RECORDINGS

An Emergency Recording is triggered when the Action Button is pressed or when the G-Sensor registers a significant impact (hard braking or collision). Emergency Recordings create locked files that are not overwritten by Continuous Loop Recording. To ensure that important footage is not lost surrounding an incident, the adjacent video clip is locked if the incident happens within 30 seconds of the beginning or end of a clip.

### THE SD MEMORY CARD

The device comes with a SD memory card. To remove the SD card, press firmly on the card to push it further into the slot until you hear a click. The card will pop out upon release. Extract the card and replace it if necessary by inserting a new card into the slot and pressing until it locks in place.

This dash cam supports SD cards up to 512GB. Before using, be sure to format the card in-dash cam. We recommend using Class 10 high-endurance cards from reputable brands for continuous video recording in a dash cam.

For the latest compatible SD cards, check [www.cobra.com](http://www.cobra.com).

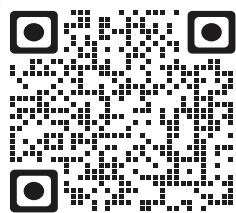
### VOLUME ADJUST

The SC 220C allows you to select "Volume" in the setting menu to adjust the volume of notifications and voice announcements. You can also make volume adjustments using the Drive Smarter® app.

### INITIAL SETUP

Upon initial power-up, the device will display the video stream and initiate loop recording automatically. To optimize functionality, **it is recommended to pair the dash cam with the Drive Smarter® app for downloading the latest firmware and ensuring the dash cam is up-to-date.** Please refer to the CONNECTION INSTRUCTIONS for app-to-dash cam pairing.

## DRIVE SMARTER®



Download  
**DRIVE SMARTER®**



## CONNECTION INSTRUCTIONS

1. Start the Drive Smarter® app and log in/create an account.
2. Follow the instructions in the Drive Smarter® app to create a vehicle and connect the dash cam.
3. When complete, a chime will sound on the dash cam and it will appear as Connected in the Drive Smarter® app.

## 360 ALERTS

Connecting to the Drive Smarter® app enables your dash cam to receive real-time driver alerts about what is on the road ahead, including:



Red Light Dash cam



Speed Dash cam



Speed Traps



Live Police



Caution Areas



Shared Radar & Laser Alerts



Red Light & Speed Cameras



Heads-Up Navigation

## HEADS-UP NAVIGATION

Connecting your dash cam to the Drive Smarter® will also enable you to receive Heads-Up Navigation instructions on the dash cam display.

Simply connect your SC 220C to Drive Smarter® app, find a route in the app, and drive using the dash cam for guidance!



**DRIVE SMARTER®**



## VIDEO SCREEN

The video screen serves as the main screen for the dash cam. With the SC 220C, depending on your settings, you can choose to display one, two, or three views simultaneously.

## PARKING LIVE VIEW

Enables security recording and live viewing of your dash cams. (Hardwire kit and WiFi hotspot required)

## TRIP CLIPS

Create time-lapse videos of your drives to easily share with friends and family.

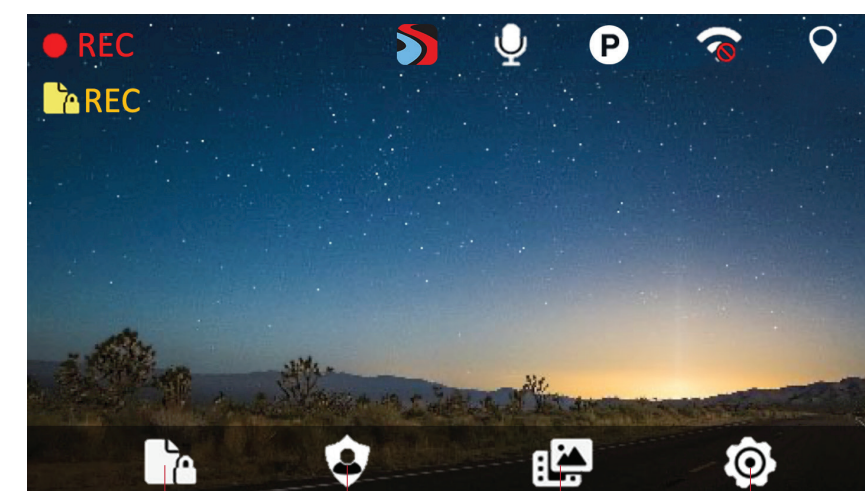
## VIDEO SCREEN BASICS

When first powered on, the video screen will show you what the dash cam sees.

**Note:** The button functions are different depending on whether the unit is currently recording or not.

When first turned on or connected to power, the dash cam is in Loop Recording mode.

Loop recording must be stopped for the unit to enter the Settings Menu.



Lock  
Recording

Privacy  
Mode

Video  
Gallery

Settings



## STATUS BAR ICONS



Indicates when dash cam is loop recording.



Hazard icon appears in status bar if an Emergency Recording is in progress. The video is being locked.



Indicates when the dash cam is connected to the Drive Smarter app.



Indicates whether the microphone is active or muted.



Indicates if Parking Mode is enabled.



Indicates that WiFi is enabled on the dash cam, WiFi connection is possible if paired with a phone.



Camera connected to user's Hotspot.



Active WiFi connection to Drive Smarter (used when viewing videos through the app).



GPS Icon appears when there is a satellite lock and the camera is tracking location, date, and time. GPS Tracking may not be possible in tunnels or in parking garages.

## VIDEO SETTINGS

### Video Resolution

This setting allows you to set the following resolutions on your camera. Lower resolution settings result in smaller file sizes, which makes the files easier to transfer and share.

The available resolutions are:

- 1440P QHD ..... 2560 x 1440 30 Frames per Second
- 1080P Full HD ..... 1920x1080 30 Frames per Second

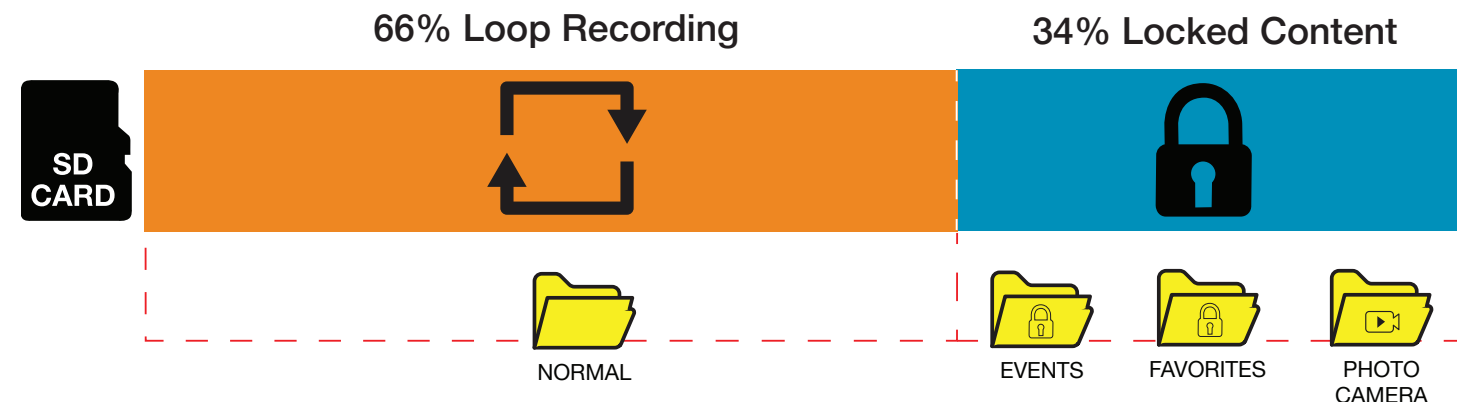
### Video and Photo Playback Mode

This device stores videos and photos on its removable SD card. In Playback mode, you can review saved files and play back videos with sound. Use the arrows to navigate and the OK key to select a video or photo. Press the Back key to return to the previous screen.

You can view and delete photos. There's no need to lock photo files, as they won't be overwritten by continuous loop recording.

## VIDEO SETTINGS *continued*

### Memory Card Storage



#### Loop Recordings

Once the SD card is full, the dash cam will continuously overwrite the oldest footage recorded with recent recordings. To protect a clip so that it will not be overwritten, press the **Action Button** so that the clip is moved into the locked content partition.



#### Locked Recordings

An Emergency Recording is triggered when the **Action Button** is pressed or when the G-Sensor registers a significant impact (hard braking or collision). Emergency Recordings create locked files that are not overwritten by Continuous Loop Recording. To ensure that important footage is not lost surrounding an incident, the adjacent clip is locked if the incident happens within 30 seconds of the beginning or end of a clip.



#### Photos

Photos are automatically saved in the Locked partition of the SD card.



#### Trip Clip Recordings

When enabled, the camera will record 1 frame every 5 seconds to create time lapse recordings so you can easily share scenic drives with family and friends (1 minute clip will contain ~2.5 hours of driving). This will replace the standard loop recording for the front camera when enabled.

- Trip Clip Recordings are used for the front camera only. Rear or Cabin cameras will record normally.
- Trip Clips will be interrupted and normal recording will resume if an impact is detected or the lock clip button is pressed. This is done in order to save important footage in case of an accident.



You may be occasionally asked to “Format the SD Card” by the dash cam. This will delete all SD card content and to help the memory card continue operating properly. Please save all important footage by downloading via the Drive Smarter® app or by manually uploading to your PC before doing this.

## SAFETY FEATURES

The SC Series dash cams come with several safety features designed to protect you and your vehicle. You can adjust the level of protection that fits you via dash cam and Drive Smarter® app settings.

### G-Sensor Impact Detection

Your dash cam is equipped with a built-in G-Sensor that can detect collisions. If a collision is detected, it automatically secures the recording during the incident. Additionally, if the event happens within 30 seconds of the start or end of a clip, the adjacent recording is also locked. This ensures you always have at least 30 seconds saved before and after the event.

You can adjust the G-Sensor sensitivity from 1 to 3 or turn it off. Level 1 makes it easiest to activate the G-sensor, while Level 3 only locks videos in the case of the most severe impacts. Videos locked due to G-sensor impact detection are stored in the Events folder on the SD card.

### Parking Mode & Motion Detection

Parking Mode utilizes the built-in Motion Sensor and G-Sensor to monitor your vehicle when it's parked\*. While parked, the dash cam is in a “sleeping” state, keeping an eye out for motion or G-Sensor impacts. If either is detected, the unit will wake and begin recording.

After 5 minutes of inactivity, the dash cam automatically enters parking mode. If no motion is detected during this period, the display turns off, and recording stops, with the dash cam staying alert for potential G-sensor impacts or motion. When motion or a G-sensor impact above Level 1 occurs, the unit awakens and starts saving 1-minute clips as long as activity is detected.

\* Optional hardwire kit required

### Notes

- Parking Mode only works properly if the dash cam is powered. Either the 12V power port must remain on with the ignition off, or the dash cam must be hardwired to a constant power source (please check [www.cobra.com](http://www.cobra.com) for available accessories).
- In scenarios where frequent motion triggers the sensor and prevents the dash cam from entering sleep mode, the “Auto Surveillance Shutoff” setting can be employed. This feature helps avoid unnecessary recordings.  
If your vehicle remains inactive for more than 48 hours (or a shorter duration for older batteries), it is advisable to utilize the “Auto Surveillance Shutoff” setting. This allows you to set a time limit on Parking Mode, preventing potential battery drainage.
- You can choose to have your dash cam monitor for impacts and/or motion by controlling the ‘Parking Mode’ and ‘Motion Detection’ settings separately.





## GENERAL SETTINGS

### Video Resolution

Allows you to select the desired video resolution for loop recordings and emergency videos. Smaller (1 min) files are easier to transfer to your phone and share.

### Loop Clip Time

Loop recordings and emergency videos can be saved in 1 min, 2 min, or 3 min clips depending on your preference. Smaller (1 min) files are easier to transfer to your phone and share.

### WiFi

Allows enabling/disabling WiFi connection on the device and viewing the dash cam's WiFi name and password.

### GPS

GPS can be disabled if needed. Enabling this setting allows your recordings to have an exact GPS location stamped on the footage. This also always allows you to know the location of your vehicle if the dash cam is wired via a hardwire kit and connected to a WiFi hotspot is installed in the car.

### Date / Time

- Enable “Automatic” mode to have date / time settings based on the dash cam's GPS signal. Having the correct date and time ensures that timestamps associated with your videos are accurate. In this mode, you will still have to ensure that you have picked the correct “Time Zone” and enabled or disabled “Daylight Savings” based on your location.
- To manually set the date and time, cursor down to “Manual”, and select it. You will now be able to enter Date and Time information.

### Microphone

The microphone can be enabled or disabled via settings or on the main screen. When disabled your recorded videos will be silent.

### Motion Detection

Enabling Motion Detection allows your dash cam to monitor movement around the dash cam (changes in light) which can be used to record any suspicious activity around the vehicle when parked. This setting screen allows you to choose which of the available dash cams should be used to monitor for activity. If leaving your vehicle off for more than 48 hours (or less if your battery is old) please use the “Auto Surveillance Shutoff” setting to set a time-limit on Motion Detection and prevent your battery from being drained.

**Note:** For Motion Detection to work the dash cam needs to be connected via hardwire kit (part: **0010070-1**) or be plugged into an ‘always on’ Cigarette Lighter Socket using a 12V power cable (12V Power Adapter (CLA) # **PN: 0010072-1** or Fuse Tap Power Adapter #**0010073-1**). You can check if your vehicle has an ‘always on’ CLA adapter online or in the vehicles owners manual.



### Parking Mode

Enabling Parking Mode allows your dash cam to monitor for changes in its internal G-Sensor/ accelerometer. Bumps, collisions, and break-ins can trigger the G-Sensor to save valuable footage from the moment of impact. If leaving your vehicle off for more than 48 hours (or less if your battery is old) please use the “Auto Surveillance Shutoff” setting to set a time-limit on Motion Detection and prevent your battery from being drained.

**Note:** For Parking Mode to work the dash cam needs to be connected via hardwire kit (see page 4 for more details) or be plugged into an ‘always on’ cigarette lighter socket. You can check if your vehicle has an ‘always on’ CLA adapter online or in the vehicles owners manual.

### Surveillance Auto Shutoff

If leaving your vehicle off for more than 48 hours (or less if your battery is old) please use the “Auto Surveillance Shutoff” setting to set a time-limit on Motion Detection and Parking Mode to prevent your battery from being drained. Auto Shutoff time starts after Parking Mode starts.

### G-Sensor

You can use this setting to set the sensitivity of the G-Sensor from 1-3 or turn it off. Level 1 is the easiest to activate the G-sensor. Level 3 is the setting which will only lock videos when the most severe impacts are detected. Level 1 is recommended for most users.

### Watermark (Date/Time, Speed, GPS, Driver ID Video Stamp

The watermark settings allow you to toggle having the date/time, speed, GPS coordinates, the Cobra logo and a custom Driver ID be stamped into the bottom of all recorded video.

### Driver ID Watermark

This setting allows you to associate a Driver ID with the dash cam (for example: John, Employee 12, etc). This allows you to set the name of the driver which will be stamped on the footage as part of the watermark.

### Exposure

Allows you to adjust how light or dark videos and images will appear on the dash cam.

### Screen Saver

Allows you to set a duration after which the device's display turn off with the dash cam still recording. This setting is useful to avoid distracted driving and having a bright LED screen when driving at night. When Screen Saver : Display Speed and Time is selected, the display will turn off but the display shows a current speed and time.

### Interior Night Vision

The optional interior dash cam's infrared LEDs allow for clear recording at night. You can set this to be always on, off, or select Auto to allow the dash cam to detect low-light conditions and automatically enable Interior Night Vision recording.

### Language

This setting allows you to pick the on-screen language for the dash cam unit.



### 360 Alerts

This feature enables users to view real-time and shared alerts gathered from the Drive Smarter® network. You have the option to receive voice announcements from the dash cam when approaching a red light camera or speed camera location or to only see visual warnings on the LCD display. Alternatively, you can opt to disable notifications from the unit altogether and rely solely on the Drive Smarter® app for guidance.

### Drive Smarter® Services

These settings allow you to select which videos you would like auto-uploaded to the Drive Smarter® app for sharing/review. You can also choose to have Incident Reports sent to your insurance provider, as well as Mayday alerts sent to your Emergency Contact if a severe G-Sensor event is detected.

### Speed Units

Choose between miles/hour or kilometers/hour as the speed unit stamped in the watermark.

### Volume

Allows you to raise and lower the volume of notifications and button beeps from your dash cam.

### Restore Defaults

Resets the device to factory settings. **Note:** restoring defaults will NOT erase data on your memory card.

### Format SD Card

Allows you to format the inserted SD card. **Note:** This action will permanently delete all data on the card. It is recommended to format any new card and periodically format existing cards.

### About

You can use this setting to view your dash cams electronic serial number including FCC ID number and Industry Canada number. You can also view the manufacture part number and firmware version.



### CLOUD VIDEO MANAGEMENT

Important Videos can be uploaded to the cloud by connecting to the camera's gallery using the Drive Smarter app. Simply view the desired video and press "Upload to Cloud". These videos are uploaded to your Drive Smarter Portal for safekeeping, allowing you to free up space on your SD Card for new locked recordings.

### Parking Live View

**To use Parking Mode and Remote Live View, ensure these settings are enabled on your camera.**

- Remote Live View: This feature allows remote viewing of your camera's video stream to monitor your vehicle or loved ones. Connect your camera to an always-on hotspot such as your built-in vehicle WiFi (with active subscription), an in-car WiFi adapter, or home WiFi. Use the Drive Smarter app to set up Hotspot Settings (Devices > Device Settings > Hotspot Settings).
- Parking Mode: This feature allows the camera to go into a low-power state

Ensure your camera's firmware is up-to-date to use Cloud Features. Accept over-the-air updates when prompted by Drive Smarter or check the Firmware Update page in your device settings.

#### When the vehicle is powered on:

- The camera can initiate a Remote Live View session without requiring a hardwire kit.
- If connected to an active internet hotspot, it will appear as "Available" on the administrator's Drive Smarter account.
- View the live feed on the Drive Smarter app's "Remote Security" tab or by logging into Drivesmarter.com via the web portal.

#### When the vehicle is powered off and Parking Mode is enabled:

- The camera enters Low Power Parking Mode after a period of inactivity.
- The camera monitors for impacts using the built-in G-Sensor.
- Upon detecting an impact, the camera turns on fully, begins recording immediately, and connects to any programmed hotspot.
  - If Parking Mode Notifications are enabled, the account administrator will receive a notification from the Drive Smarter app that an impact has been detected.
  - If Automatic Video Upload is enabled, clips of the incidents will automatically upload to the account holder's Drive Smarter account for review (accessible on Drivesmarter.com).
- View the live feed using the Remote Security tab on the Drive Smarter app or by logging into Drivesmarter.com.
- If the camera displays as "Unavailable," it has returned to low-power Parking Mode (disconnected from internet) and is monitoring for additional impacts.





### CLOUD VIDEO MANAGEMENT *continued*

#### Automatic Video Upload

If Automatic Video Upload is enabled, locked recordings will automatically upload to the account holder's Drive Smarter account for review (accessible on Drivesmarter.com). This applies to locked recordings while driving or while parked. Log into Drivesmarter.com to view your cloud videos.

#### Parking Mode Notifications

If Parking Mode Notifications are enabled, the account administrator will receive notifications when a Parking Mode incident is detected through the Drive Smarter app.

#### Please ensure that:

- The camera is hardwired to the vehicle for constant power or is connected to an “always on” CLA port.
- The camera has been programmed to a hotspot with an active internet connection.
- Your phone allows notifications from Drive Smarter.



Ensure the dash cam is connected to a constant power source during the update process. Failure to do so could result in your unit becoming non-functional. Your vehicles cigarette lighter socket or a household outlet work best.

#### Using the Drive Smarter® App

- View the current firmware version under the About menu item on the dash cam:
  - Stop loop recording
  - Press the MENU button, cursor down to the ABOUT item
  - Note the firmware version shown on the screen
- Power up your dash cam by connecting to constant power source such as your vehicles CLA adapter or a household outlet.
- When you connect your dash cam, the app will check if a newer firmware update is available on the server.
- Press 'Download' on the notification to download the latest Firmware.
- Follow the instructions on the Drive Smarter® app. If successful, the dash cam's LED's will begin blinking while the firmware is being installed.
- To check that the Firmware update was successful, you can check the 'About' screen in your dash cam's settings menu.

#### Using a Mac or PC

For optimal performance, check [www.drivesmarter.com](http://www.drivesmarter.com) periodically for software updates.

- View the current firmware version under the About menu item on the dash cam:
  - Stop loop recording
  - Press the MENU button, cursor down to the ABOUT item
  - Note the firmware version shown on the screen
- Connect the dash cam to your computer using the included USB to USB-C cable.
- Power on the dash cam and select Connect to Computer using the record/select button.
- The dash cam will be listed in Windows Explorer/Finder.
- Download the update file from [www.drivesmarter.com](http://www.drivesmarter.com) and save it to your computer. It will end with “.bin” as the file extension. **Note:** You do not need to double click or open this file on the computer.
- Copy/paste or drag the update file you downloaded .bin file into the root directory of the dash cam's SD card.
- Wait for the file to transfer and then safely disconnect the dash cam from the computer. The dash cam will turn off.
- Plug the USB-C cord into a reliable power source such as your home's outlet or your vehicle's CLA adapter. The dash cam will turn on and automatically boot into the Firmware Update Menu.
- Follow the directions on the dash cam display to update firmware if the unit has one. Units without displays will update automatically.
- You can check if your dash cam is up to date by checking the firmware in your dash cams 'About' setting submenu in the dash cam or via the app.



## Dash Cam Specifications



## Troubleshooting

			
Features / Models	SC 120	SC 220C	SC 250R*
Video Resolution	QHD	QHD+ (1600P) Front Only Full HD (1080P) Interior	UHD (4K) Front Only, Full HD (1080P) Rear
Camera Views	Front Only	Front & Interior Cam Included	Front & Rear Cam Included
Field of View	140°	140° Front 120° Interior	140° Front/ 120° Rear
Display	—	3" Touchscreen	3" Touchscreen
SD Card Included	16 GB	16 GB	32 GB
Embeds Time and Location on Video	✓	✓	✓
360 Alerts with the Drive Smarter® App	✓	✓	✓
Emergency Mayday Alert	✓	✓	✓
Incident Reports	✓	✓	✓
Parking Mode & Motion Detection	✓	✓	✓
Parking Live View	✓	✓	✓
Trip Clips	✓	✓	✓
Privacy Mode	✓	✓	✓
Extreme Temperature Protection	✓	✓	✓
Cloud Video Management	✓	✓	✓
Bluetooth® Connectivity	✓	✓	✓
Dual Band Wi-Fi	✓	✓	✓
Built-In GPS	—	✓	✓
Heads-Up Navigation	—	✓	✓
Accessory Camera Compatible	—	✓	✓
3-Camera Capable	—	—	✓
* Configurable Accessory Cams include External-View & Interior Cameras			

If your unit does not appear to be operating properly, please follow these troubleshooting steps:

- Make sure the power cord is properly connected.
- Make sure the socket of your vehicle's cigarette lighter is clean and free of corrosion.
- Make sure the power cord's cigarette lighter adapter is firmly seated in your cigarette lighter.
- Make sure you have downloaded the latest firmware to your unit.

### FAQ

- Where do I mount/position my dash cam on the windshield?
  - a. Power on your dash cam so you can see the dash cam's view while mounting. We recommend centering your dash cam and mounting under the rear-view mirror.
- What is the largest SD card size I can use in my dash cam?
  - a. We recommend using a minimum Class 10 or U1 card from a reputable vendor up to the following sizes.

Model	SC 120	SC 220C	SC 220C
Max SD Card Size	256GB	512GB	512GB

**Important:** When using a SD card for the first time please format the card in the dash cam by using the dash cam menu or the Drive Smarter® app.

- Why is my unit not powering up?
  - a. Please ensure your unit is properly connected. If you have turned the unit off, press and hold the power button to turn on again. If you are using Parking Mode and Motion Detection Mode with a hardwire kit, the unit might not “wake up” when you enter your vehicle. Simply begin driving and when your unit detects this it will wake up and begin recording.
- How do I use Parking Mode and Motion Detection?
  - a. Parking Mode and Motion Detection can be turned on in the dash cam's settings. These two features will monitor your vehicle automatically when the unit is connected directly to the car's vehicle via hardwire kit (check for availability at [www.cobra.com](http://www.cobra.com)).

**Note:** When the car is parked your unit will go into a low-power “standby”/sleeping state where it monitors for activity. The unit will automatically wake up when it detects significant motion or driving.

- Why is my unit not getting a GPS Lock (GPS icon is red)?
  - a. The GPS inside the device locks in with the satellite best when you are on the road. You may not be able to get a GPS lock while in your garage, parking structures, or if testing the dash cam in your home.





## Limited 1-Year Warranty and Trademark Information

### Warranty Terms:

Cobra warrants your product against all defects in materials and workmanship for a period of one (1) year from the date of original purchase.

Cobra, at our sole discretion, will repair or replace your product (with the same or comparable product) free of charge.

Cobra will not pay shipping charges that you incur for sending your product to us. Products received COD will be refused.

To make a warranty claim, we will require proof of purchase in the form of an invoice or receipt. No proof of purchase is required for factory direct purchases.

**Warranty Exclusions:** Warranty does not apply to your product under any of the following conditions: 1. The serial number has been removed or modified. 2. Your product has been subjected to misuse or damage (including water damage, physical abuse, and/or improper installation). 3. Your product has been modified in any way. 4. Your receipt or proof-of-purchase is from a non-authorized dealer or internet auction site including E-bay, U-bid, or other non-authorized resellers.

**LIMITATION OF WARRANTY: EXCEPT AS EXPRESSLY PROVIDED HEREIN, YOU ARE ACQUIRING THE PRODUCT “AS IS” AND “WHERE IS”, WITHOUT REPRESENTATION OR WARRANTY. COBRA SPECIFICALLY DISCLAIMS ANY REPRESENTATION OR WARRANTY INCLUDING, BUT NOT LIMITED TO THOSE CONCERNING THE MERCHANTABILITY AND SUITABILITY OF THE PRODUCT FOR A PARTICULAR PURPOSE. COBRA SHALL NOT BE LIABLE FOR CONSEQUENTIAL, SPECIAL OR INCIDENTAL DAMAGES INCLUDING, WITHOUT LIMITATION, DAMAGES ARISING OUT OF THE USE, MISUSE OR MOUNTING OF THE PRODUCT.**

The above limitations or exclusions shall be limited to the extent they violate the laws of any particular state. Cobra is not responsible for products lost in shipment between the owner and our service center.

### General Warranty Information

Each product we manufacture is covered by our factory warranty. While each product may have unique components and policy, the general guideline below will apply to most Cobra products.

All Cobra products purchased factory-direct or from our Authorized Resellers will come with a full one to three (1-3) year warranty from the date of the original retail purchase (see policy statement above for full warranty details and exclusions).

Standard accessories packaged with each model will have a one-year factory warranty.

Accessory items have a one-year factory warranty.

Shipping to our facility is not covered in our warranty. Return shipping is included within the US.

This warranty is non-transferrable.

For the sake of clarity, ‘repair or replace the Product or its defective part’ does not include removal or installation work, costs or expenses which include but are not limited to labor costs or expenses.

Cobra will not be responsible for lost packages.

©2024 Cobra Electronics Corporation. Cobra and the snake design are proprietary trademarks of Cobra Electronics Corporation, USA. Other trademarks and trade names are those of their respective owners.

Cobra Electronics Corporation™ is a trademark of Cobra Electronics Corporation, USA.

Drive Smarter® is a registered trademark of Cedar Electronics Corporation.

Apple and the Apple logo are trademarks of Apple Inc. Registered in the U.S. and other countries. App Store is a service mark of Apple Inc. Android and Android Auto are trademarks of Google LLC. Compatible Android phone and compatible active data plan required. The Bluetooth® word mark and logos are registered trademarks of Bluetooth SIG, Inc. and any use of such marks by Cobra Electronics Corporation is under license. Features, Specifications and prices subject to change without notice. The Driver Awareness Alert display feature is subject to US Patent Numbers 8,842,004 and 8,970,422 and additional pending US Patent Applications.



## FCC Regulatory Information and Warnings

### FCC ID:BBOSC220 IC:906A-SC220

**NOTE:** This device complies with part 15 of FCC rules: Operation is subject to the following two conditions: (1) This device may not cause harmful interference, and (2) This device must accept any interference received including interference that may cause undesired operation.



**CAUTION:** Modifications or parts not approved by Cobra Electronics Corporation may violate FCC Rules and void authority to operate this equipment. This device complies with RSS-310 of Industry Canada. Operation is subject to the condition that this device does not cause harmful interference.

CAN ICES-3B/NMB-3B.



**DISPOSAL OF ELECTRONICS EQUIPMENT:** This product may contain hazardous substances that could impact health and the environment if not disposed of properly.

The crossed out wheeled bin symbol indicates that the product should not be disposed of along with household waste. It should be handed over to an applicable collection point for the recycling of electrical equipment. By ensuring that this product is disposed of correctly you will help/prevent potential negative impact on the environment.

If you need more information on the collection, reuse and recycling systems, please contact your local civic office or the shop where it was originally purchased.



### FCC Caution

#### Information to the user.

**NOTE:** This equipment has been tested and found to comply with the limits for a Class B digital device, pursuant to part 15 of the FCC Rules. These limits are designed to provide reasonable protection against harmful interference in a residential installation. This equipment generates uses and can radiate radio frequency energy and, if not installed and used in accordance with the instructions, may cause harmful interference to radio communications. However, there is no guarantee that interference will not occur in a particular installation. If this equipment does cause harmful interference to radio or television reception, which can be determined by turning the equipment off and on, the user is encouraged to try to correct the interference by one or more of the following measures:

- Reorient or relocate the receiving antenna.
- Increase the separation between the equipment and receiver.
- Connect the equipment into an outlet on a circuit different from that to which the receiver is connected.
- Consult the dealer or an experienced radio/TV technician for help.

This equipment complies with FCC radiation exposure limits set forth for an uncontrolled environment. This equipment should be installed and operated with minimum distance 20cm between the radiator & your body.

### ISED Warning:

This device complies with Industry Canada licence-exempt RSS standard(s).

Operation is subject to the following two conditions: (1) This device may not cause interference, and (2) This device must accept any interference, including interference that may cause undesired operation of the device.

#### - French:

Le présent appareil est conforme aux CNR d'Industrie Canada applicables aux appareils radio exempts de licence. L'exploitation est autorisée aux deux conditions suivantes:

- (1) l'appareil ne doit pas produire de brouillage, et
- (2) l'utilisateur de l'appareil doit accepter tout brouillage radioélectrique subi, même si le brouillage est susceptible d'en compromettre le fonctionnement.