

KENWOOD

VHF FM TRANSCEIVER

TK-752/TK-759

UHF FM TRANSCEIVER

TK-852/TK-859

INSTRUCTION MANUAL

KENWOOD CORPORATION

THANK YOU!

We are grateful you chose **KENWOOD** for your personal mobile applications. We believe this easy-to-use transceiver will provide dependable communications to keep personnel operating at peak efficiency.

KENWOOD transceivers incorporate the latest in advanced technology. As a result, we feel strongly that you will be pleased with this product's quality and features.

MODELS COVERED BY THIS MANUAL

TK-752: VHF FM Transceiver

TK-852: UHF FM Transceiver

TK-759: VHF FM Transceiver

TK-859: UHF FM Transceiver

NOTICES TO THE USER

It is important that the operator is aware of and understands hazards common to the operation of any transceiver.

WARNING:

GOVERNMENT LAW PROHIBITS THE OPERATION OF UNLICENSED RADIO TRANSMITTERS WITHIN THE TERRITORIES UNDER GOVERNMENT CONTROL.

ILLEGAL OPERATION IS PUNISHABLE BY FINE OR IMPRISONMENT OR BOTH.

REFER SERVICE TO A QUALIFIED LICENSED OR CERTIFIED TECHNICIAN ONLY.

WARNING:

EXPLOSIVE ATMOSPHERES (GASES, DUST, FUMES, ETC.)

Turn off and do not operate your transceiver while taking on fuel, or while parked in gasoline service stations.

INJURY FROM RADIO FREQUENCY TRANSMISSIONS

Do not operate your transceiver when anyone is touching the antenna, or when anyone is standing within one meter of your antenna, to avoid the possibility of radio frequency burns or related physical injury.

DYNAMITE BLASTING CAPS

Transmitting with your transceiver can cause dynamite blasting caps to explode if such operation occurs within 150 meters of the blasting caps. Turn off and do not operate your transceiver when in an area where blasting is in progress, or where "TURN OFF TWO-WAY RADIO" signs have been posted. If you are transporting blasting caps in your vehicle, make certain they are carried in a closed metal box having a padded interior. Do not transmit during the time that caps are being placed into or removed from this container.

PRECAUTIONS

CONTENTS

Please observe the following precautions to prevent fire, personal injury, and transceiver damage:

- Do not attempt to configure the transceiver while driving because it is simply too dangerous.
- Do not modify the transceiver for any reason.
- Do not expose the transceiver to long periods of direct sunlight, nor place the transceiver near heating appliances.
- Do not place the transceiver in excessively dusty areas, humid areas, nor on unstable surfaces.
- If an abnormal odor or smoke is detected coming from the transceiver, turn OFF the power immediately. Contact your **KENWOOD** dealer.

CONTENTS

THANK YOU!	Inside Front Cover
MODELS COVERED BY THIS MANUAL	Inside Front Cover
NOTICES TO THE USER	Inside Front Cover
PRECAUTIONS	i
UNPACKING AND CHECKING EQUIPMENT	1
Supplied Accessories	1
PREPARATION	2
INSTALLATION GUIDANCE	2
Tools Required	3
DC Power Cable Connection	3
Mobile Installation	3
CONTROLS AND FUNCTIONS (TK-752/TK-852)	4
FRONT PANEL	4
MICROPHONE	5
REAR PANEL	5
KEY DEFINITIONS	5
CONTROLS AND FUNCTIONS (TK-759/TK-859)	6
FRONT PANEL	6
DISPLAY	7
OPTIONAL MICROPHONE	8
REAR PANEL	8
KEY DEFINITIONS	8

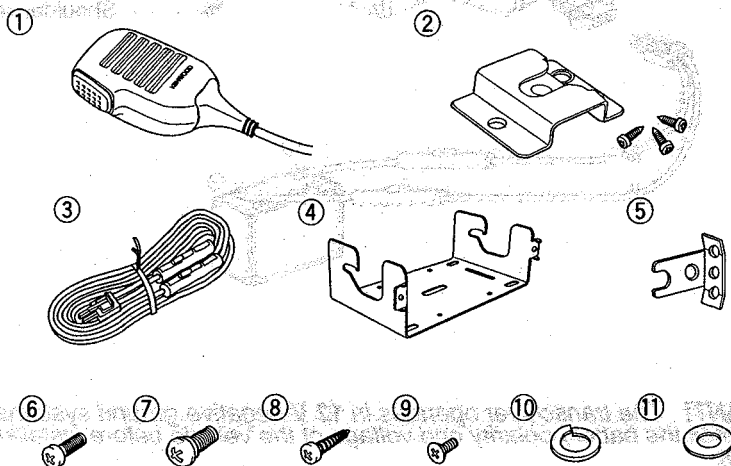
UNPACKING AND CHECKING EQUIPMENT

Note: The following instructions are for use by your **KENWOOD** dealer, an authorized **KENWOOD** service facility, or the factory.

Carefully unpack the transceiver. We recommend that you identify the items listed in the chart on this page before discarding the packing material. If any damage has occurred during shipment, file a claim with the carrier immediately.

■ Supplied Accessories

Item	Part Number	Qty.
① Microphone: TK-752/TK-852 only	T91-0552-XX	1
② Microphone hanger with screws: TK-752/TK-852 only	J19-1584-XX	1
③ DC power cable	E30-2076-XX	1
④ Mounting bracket	J29-0626-XX	1
⑤ Angle bracket	J21-4498-XX	2
Screw set	N99-0393-XX	
⑥ Machine screw	N30-4010-XX	2
⑦ Shoulder screw	N09-2267-XX	2
⑧ Self-tapping screw	N46-5016-XX	4
⑨ Self-tapping flat-head screw	N88-3008-XX	2
⑩ Spring washer	N16-0050-XX	4
⑪ Flat washer	N15-1050-XX	4
Instruction manual	B62-0572-XX	1



PREPARATION

WARNING: INTERFERENCE WITH VEHICULAR ELECTRONICS

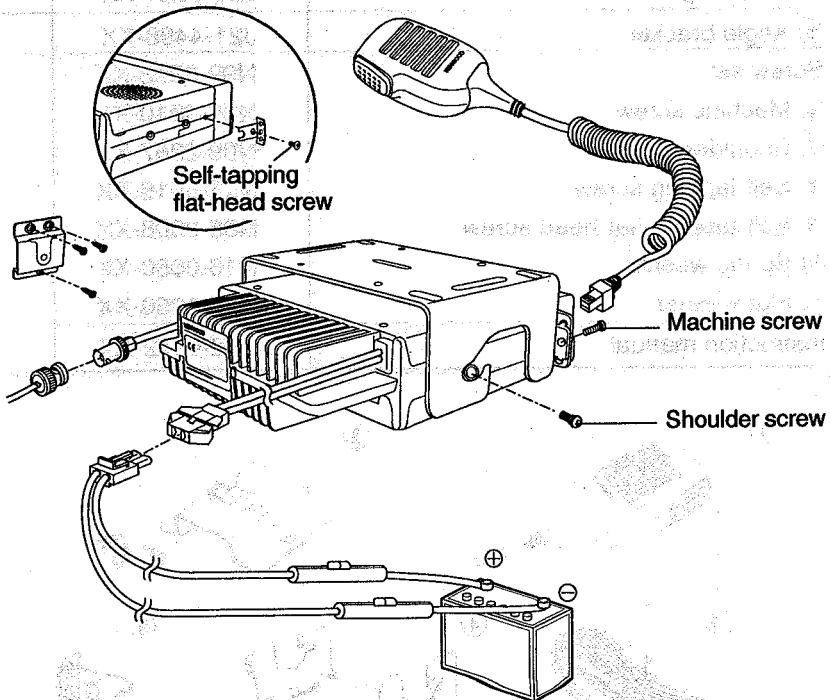
Fuel injection systems, anti-skid braking systems, and cruise control systems are typical of the kinds of electronic devices that may malfunction due to a lack of protection from radio frequency energy that is present when transmitting. If the vehicle contains such equipment, consult the dealer for the make of vehicle and enlist his aid in determining if such electronic circuits will perform normally when the transceiver is transmitting.

Note: The following instructions are for use by your **KENWOOD** dealer, an authorized **KENWOOD** service facility, or the factory.

INSTALLATION GUIDANCE

The diagram below will guide you in making connections to the transceiver.

Note: Before installing the transceiver using the supplied mounting bracket, connect the antenna and the supplied DC power cable to the transceiver.



IMPORTANT! The transceiver operates in 12 V negative ground systems only! Always check the battery polarity and voltage of the vehicle before installing the transceiver.

■ Tools Required

Note: Before installing the transceiver, always check how far the mounting screws will extend below the mounting surface. When drilling mounting holes, be careful not to damage vehicle wiring or vehicle parts.

The following tools are required for installing the transceiver:

- 6 mm (1/4") or larger electric drill
- Drill bits (sizes listed below) and circle cutters

Drill Bit Size	Purpose
ø4.2 mm (5/32")	ø5 x 16 self-tapping screws
ø3.2 mm (1/8")	ø4 x 16 self-tapping screws

■ DC Power Cable Connection

IMPORTANT! The transceiver operates in **12 V** negative ground systems only! Always check the battery polarity and voltage of the vehicle before installing the transceiver.

- 1 Check for an existing hole conveniently located in the firewall through which the DC power cable can be passed.
 - If no hole exists, drill the firewall and install a rubber grommet.
- 2 Run the two power cable leads into the engine compartment from the passenger compartment.
 - Start routing the power cable while keeping the plug end of the cable at the transceiver.
- 3 Connect the red lead to the positive (+) battery terminal or switched power source, and the black lead to the negative (–) battery terminal.
 - Always locate the fuse as close to the battery as possible.
- 4 Coil up the surplus cable and secure it out of the way with the appropriate retaining strap.
 - Ensure enough slack is available in the cables so that the transceiver can be removed for servicing with the power applied.

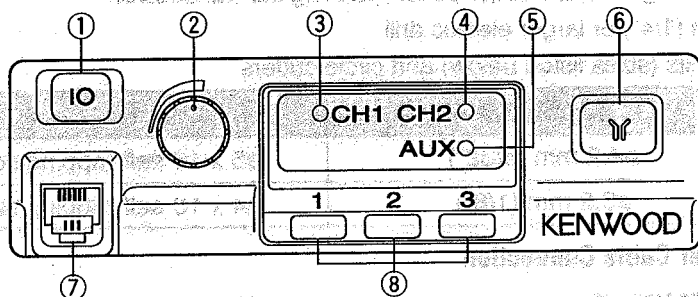
■ Mobile Installation

To avoid danger to passengers, install the transceiver securely using the supplied mounting bracket so that the transceiver will not break loose in the event of collision. This is especially important in station wagons, vans, or similar types of vehicles where a loose transceiver could be extremely dangerous to vehicle occupants.

- Plan the transceiver installation so that the controls on the front panel are within easy reach of the user.
- Use the mounting bracket as a template to locate the holes, then drill the holes and mount the transceiver.
- Leave sufficient room at the rear of the transceiver for cable connections.

CONTROLS AND FUNCTIONS (TK-752/TK-852)

FRONT PANEL



① POWER switch

Press to turn the power ON or OFF.

② VOLUME control

Turn clockwise to increase the volume or counterclockwise to decrease the volume.

③ CH1 indicator

Lights orange when channel 1 is selected. Lights red while transmitting. Lights green when signals are present on the currently selected channel. Flashes orange when the Monitor function is activated. Flashes green when the Monitor function is activated and signals are present on the currently selected channel.

④ CH2 indicator

Lights orange when channel 2 is selected. Lights red while transmitting. Lights green when signals are present on the currently selected channel. Flashes orange when the Monitor function is activated. Flashes green when the Monitor function is activated and signals are present on the currently selected channel.

⑤ AUX indicator

Lights when the auxiliary function programmed by the dealer is activated.

⑥ CHANNEL selector

Press to select either channel 1 or channel 2.

⑦ Microphone connector

Insert the 6-pin modular connector plug of the microphone until the locking tab clicks.

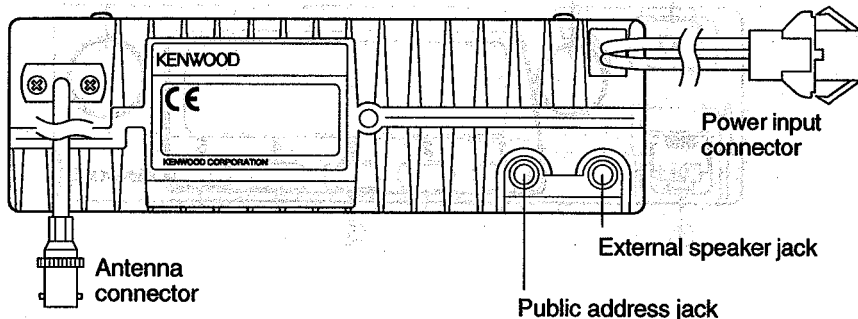
⑧ Function keys

The functions of these keys are dependent on dealer programming.

MICROPHONE

Press the **PTT** switch to transmit. Speak into the microphone while holding the **PTT** switch.

REAR PANEL



KEY DEFINITIONS

The function keys 1 to 3 on the front panel are programmed by the dealer. Complete the table below with the functions that are programmed on your transceiver.

Function Key	Programmed Functions			
	Press	Hold	Shift	Release
1				
2				
3				

Press: Execute the function by pressing the key.

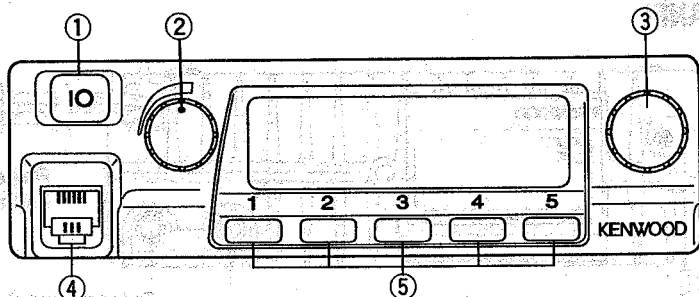
Hold: Execute the function by holding down the key for 500 ms.

Shift: Execute the function by pressing the Shift key and then the key.

Release: Execute the function by releasing the key within 500 ms after holding down the key.

CONTROLS AND FUNCTIONS (TK-759/TK-859)

FRONT PANEL



① **POWER switch**

Press to turn the power ON or OFF.

② **VOLUME control**

Turn clockwise to increase the volume or counterclockwise to decrease the volume.

③ **CHANNEL selector**

Turn to select from a maximum of 250 channels programmed by the dealer. Turning clockwise increases the channel number and turning counterclockwise decreases the number.

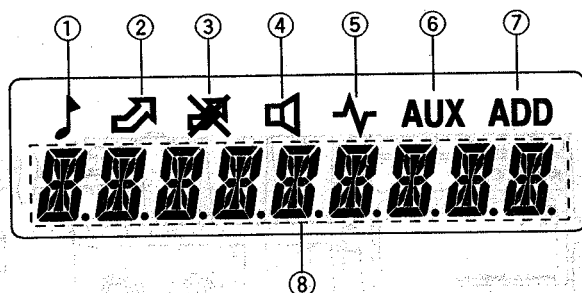
④ **Microphone connector**

Insert the 6-pin modular connector plug of the optional microphone until the locking tab clicks.

⑤ **Function keys**

The functions of these keys are dependent on dealer programming.

DISPLAY



① 

Visible while the Horn Alert function is activating.

② 

Visible while transmitting.

③ 

Visible when signals are present on the currently selected channel.

④ 

Appears when the Monitor function is activated.

⑤ 

Appears when the Squelch function is OFF.

⑥ **AUX**

Appears when the auxiliary function programmed by the dealer is activated.

⑦ **ADD**

Appears when the currently selected channel is included in the scan list.

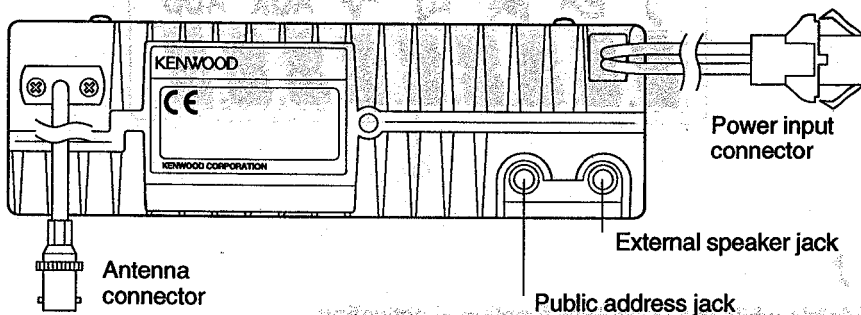
⑧ 

Depending on dealer programming, displays a channel number, a channel name, and various types of alphanumeric information.

OPTIONAL MICROPHONE

Press the **PTT** switch to transmit. Speak into the microphone while holding the **PTT** switch.

REAR PANEL



KEY DEFINITIONS

The function keys 1 to 5 on the front panel are programmed by the dealer. Complete the table below with the functions that are programmed on your transceiver.

Function Key	Programmed Functions			
	Press	Hold	Shift	Release
1				
2				
3				
4				
5				

Press: Execute the function by pressing the key.

Hold: Execute the function by holding down the key for 500 ms.

Shift: Execute the function by pressing the Shift key and then the key.

Release: Execute the function by releasing the key within 500 ms after holding down the key.