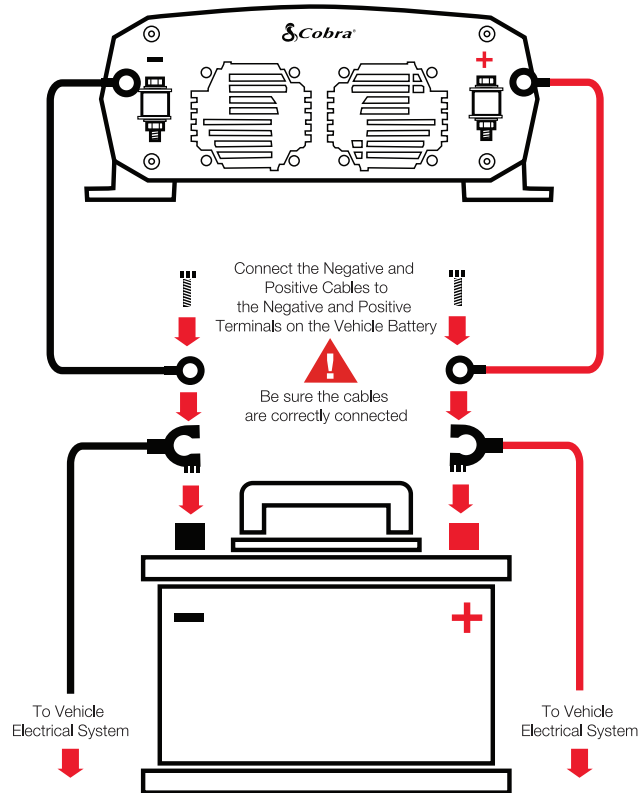


Connecting To A Vehicle Battery (continued)

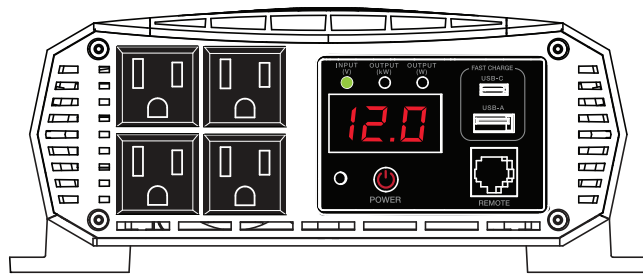
Connect the **BLACK** Cable to the **Negative** Post on the Power Inverter

Connect the **RED** Cable to the **Positive** Post on the Power Inverter



Getting Started

1. Press the **POWER** button to turn on your inverter
2. When powered on the Input Voltage LED is green

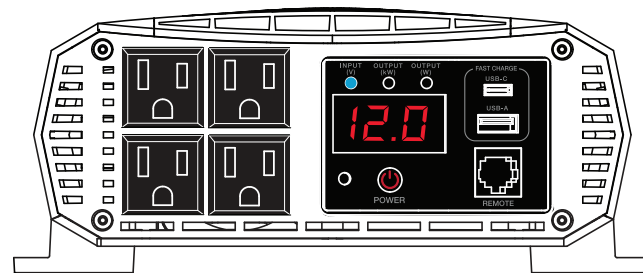


Setting Up Your Inverter

Cobra Pro Power Inverters are equipped with (2) settings to accommodate battery run times for both professional trucks and other vehicles. From the factory the inverter defaults to a 11.5 Volt Low Voltage Alarm setting for professional trucks. If using a Cobra Pro Power Inverter with other vehicle types such as a car, van or RV, run time can be extended by changing the default Low Voltage Alarm to the alternate setting at 10.5 Volts.

Instructions For Changing Low Voltage Alarm Setting to 10.5 Volts

1. Turn Power Inverter on
2. Press and hold the **POWER** button for 5 seconds or until Input Voltage LED turns blue



3. Once blue, the Low Voltage Alarm will be set to 10.5 Volts. The setting will not change when the inverter is turned off or the battery is disconnected (to go back to the default 11.5 Volt Low Voltage Alarm Setting, follow steps 1 and 2)

Cobra®

PRO 1500W

POWER INVERTER



(Sold Separately)

QUICK START GUIDE

Thank you for purchasing the Cobra PRO 1500 Watt Inverter (Model CPI1500W)

The PRO 1500W is ideal for cross-country professional drivers, travelers, campers, RV enthusiasts or for when a power outage occurs.

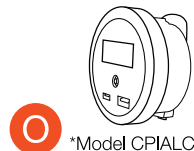
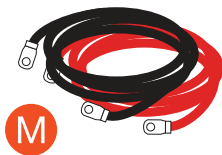
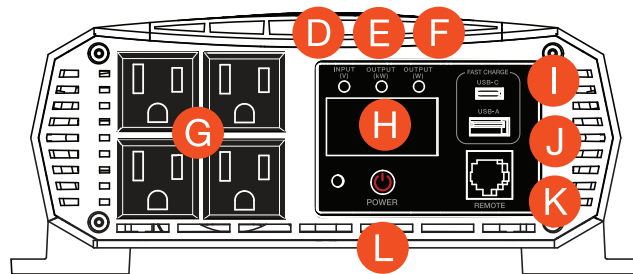
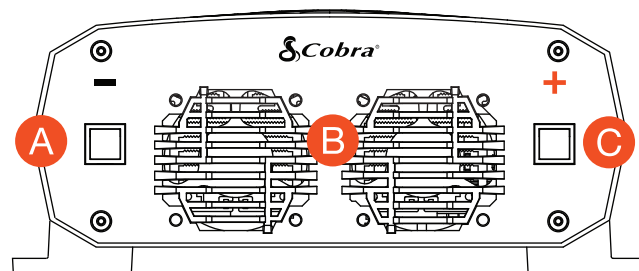
Count on Cobra for Power Where You Need It.

Download the full PRO 1500W manual at:
cobra.com/manuals



Cobra® and the snake design are registered trademarks of Cobra Electronics Corporation, USA. Cobra Electronics Corporation™ is a trademark of Cobra Electronics Corporation, USA. Other trademarks and trade names are those of their respective owners.

PRO 1500W Features



*Model CPIALCDG1

- A. Negative Power Input Terminal
- B. Cooling Fans - regulate the temperature of the inverter, turning on when temperature exceeds the preset limit, and turning off when the temperature reduces
- C. Positive Power Input Terminal
- D. Green LED - Battery Voltage Indicator (V)
- E. Yellow LED - Output Power Indicator. When active, output power is in kilowatts (kW)
- F. Red LED - Output Power Indicator. When active, output power is in Watts (W)
- G. (4) GFCI Protected AC Outlets
- H. Digital Display showing Battery Voltage (V), Power in kilowatts (kW), Power in Watts (W) and Error Codes
- I. USB-C Fast Charge port (5V/9V/15W)
- J. USB-A Fast Charge port (5V/9V/15W)
- K. Port for Cobra Remote On/Off Controller with Fast Charge USB (Sold Separately)*
- L. Power Button
- M. Power Cables
- N. Inverter Terminal Protector Boots
- O. Cobra Remote On/Off Controller with Fast Charge USB (Sold Separately)*

Connecting To A Vehicle Battery

(Please Refer to Diagram on Next Page)

1. Mount the inverter inside the vehicle in a well ventilated location close to the battery
2. Disconnect the **NEGATIVE (-)** or black battery terminal of the vehicle
3. Route cables close to the battery
4. Install the insulated terminal boots on the inverter end of the power cables (**RED = positive**, **BLACK = negative**)
5. Connect the **BLACK** Cable to the Negative (-) terminal on the Inverter
6. Connect the **RED** Cable to the Positive (+) terminal on the Inverter
7. Connect the other end of the **RED** cable to the (+) terminal on the vehicle battery
8. Visually inspect and make sure the red wire or its connectors are not touching any metal parts of the vehicle or the black wire connectors
9. Connect the other end of the **BLACK** cable to the (-) terminal on the vehicle battery. **Caution:** There is normally a spark at the point of contact at the negative terminal
10. Check all connections making sure the **RED** cable is connected to the **POSITIVE (+)** terminals and the **BLACK** cable is connected to the **NEGATIVE (-)** terminals
11. Go to **GETTING STARTED** section