

KPA500 KIT ASSEMBLY MANUAL ERRATA

Rev F9-3, July 1, 2020

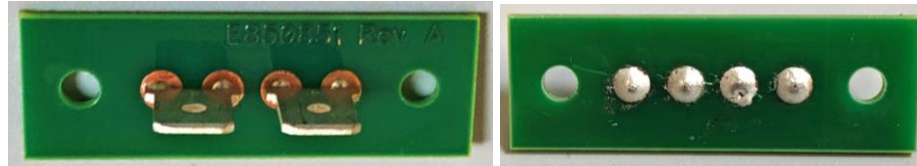
MAKE THESE CHANGES TO YOUR MANUAL BEFORE BEGINNING ASSEMBLY

1. **Page 16:** The red connector board (part number E980178) used to stow the unused power transformer taps (leads) is no longer available and is changed to a new part number, E850851.

Delete text: “Locate the terminal strip board and the flat terminal strip insulator. If not already done, bend down one side of each terminal as shown in Figure 17.”

Replace with new text: Locate terminal strip board E850851 (Figure 17) and the flat terminal strip insulator.

Delete existing Figure 17, replace with the following image:



Mount the new connector board following the existing instructions on page 17 and Figure 18.

2. **Page A8 (Parts List):** The red connector board, part number E980178, is changed to new part number, E850851. The new board is green and the fit and function is the same as the previous Terminal Strip Board.
3. **Page A8 (Parts List):** Spacer information is correct as shown in the manual. Item 3 below is incorrect, see correction below.
4. **Page 17, Figure 19:** Replace the figure with the following showing spacers placed on the mounting screws between the front and rear corner tabs on the fan housing.

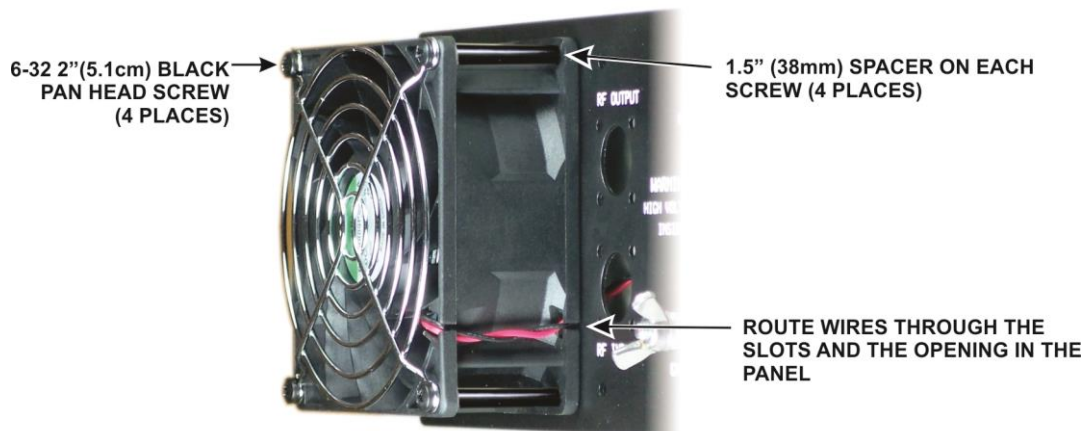




Figure 19. Installing the Fan

5. **Page A-8 (Parts list):** Add the following at the bottom of the page.

| | | | |
|---|---|---|---------|
|  | Spacer, 1.5" (38mm) should be 1-1/8" (29mm) | 4 | E700260 |
|---|---|---|---------|

6. **Page A-5 (Parts List):** The power transformer mounting bolt is changed from part number E700222 to part number E700420 (3.75" (95.25mm)). The entry should look like this.

| | | | |
|---|---|---|---------|
|  | Bolt, Fully Threaded 5/16-18 3.75" (95.25mm) | 1 | E700420 |
|---|---|---|---------|