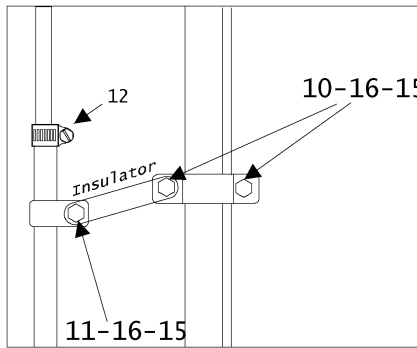
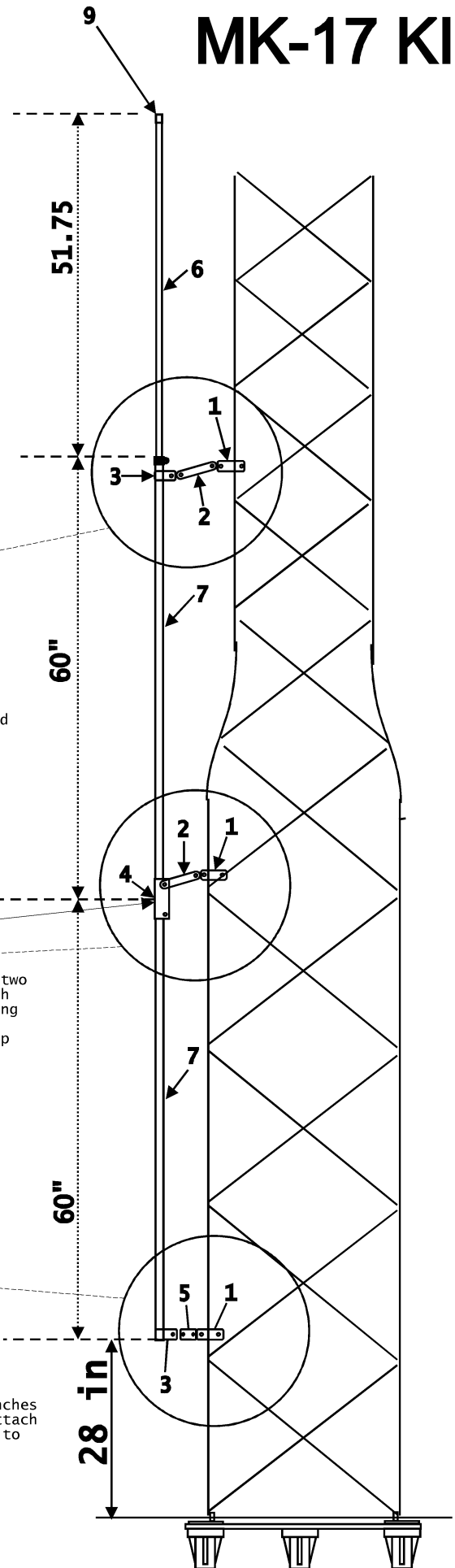
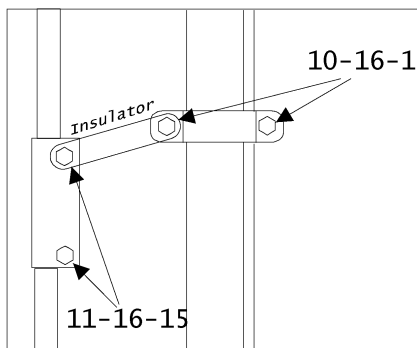
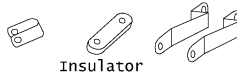


MK-17 KIT

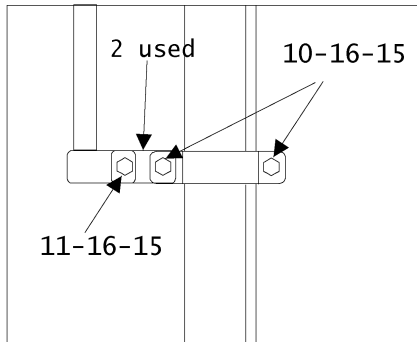
1	163300	leg clamp -----	6
2	465416	plastic insulator -----	2
3	161851	7/16 tube clamp -----	2
4	171548	7/16 splice -----	1
5	163378	AL strap (2 used) ----	2
6	174986	3/8x60 tube -----	1
7	174987	7/16x60 tube -----	2
8		not used	
9	455655	3/8 plastic cap -----	1
10	505763	bolt 1/4-20x1-3/4 -----	6
11	502955	bolt 1/4-20x1 -----	4
12	745-3104s	hose clamp -----	1
NA	504069	bolt 10-24x1/2 -----	1
NA	555693	square nut 10-24 -----	1
15	554099	hex nut 1/4-20 -----	10
16	562961	lockwasher -----	10



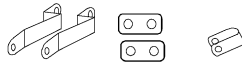
Use the last clamp and insulator to attach the upper section of the 7/16 and 3/8 that slides into it. The 3/8 tubing should be adjusted for the desired frequency of operation.



Use the splice to join the two 7/16 tubes together. Attach the splice to the tower using the leg clamp and plastic insulator. Move the clamp up or down to adjust distance between tube and tower.



Install the leg clamp 28 inches from the base triangle. Attach one section of 7/16 tubing to the leg clamp using the aluminum strap and clamp.



Installation of 17 meter stub

Select one 7/16 x 60" piece of tubing and fasten one end to one leg of the base tower section using the clamps and aluminum shorting strap as shown. Position the stub 28 inches from the bottom edge of the tower leg to the bottom of the tube.

Assemble another leg clamp, insulator, and splice. Install the second 7/16 tube onto the 17 meter stub as shown.

Install a leg clamp, insulator, and tubing clamp 40-5/8 inches above the center of the splice.

Select the 3/8 x 60" section of tubing and slip it into the 7/16 tube until 51-3/4 inches are exposed. Install a hose clamp and tighten.

Place the plastic cap on top of the 3/8 tube.

The Hy-tower should now have a low swr at or around the 17 meter band. Adjust the element length by sliding the 3/8 tube in or out of the top 7/16 section. If the swr dip point is below the band, shorten the exposed length. If the dip point is above the band, lengthen the exposed tube. Move about an inch at a time.