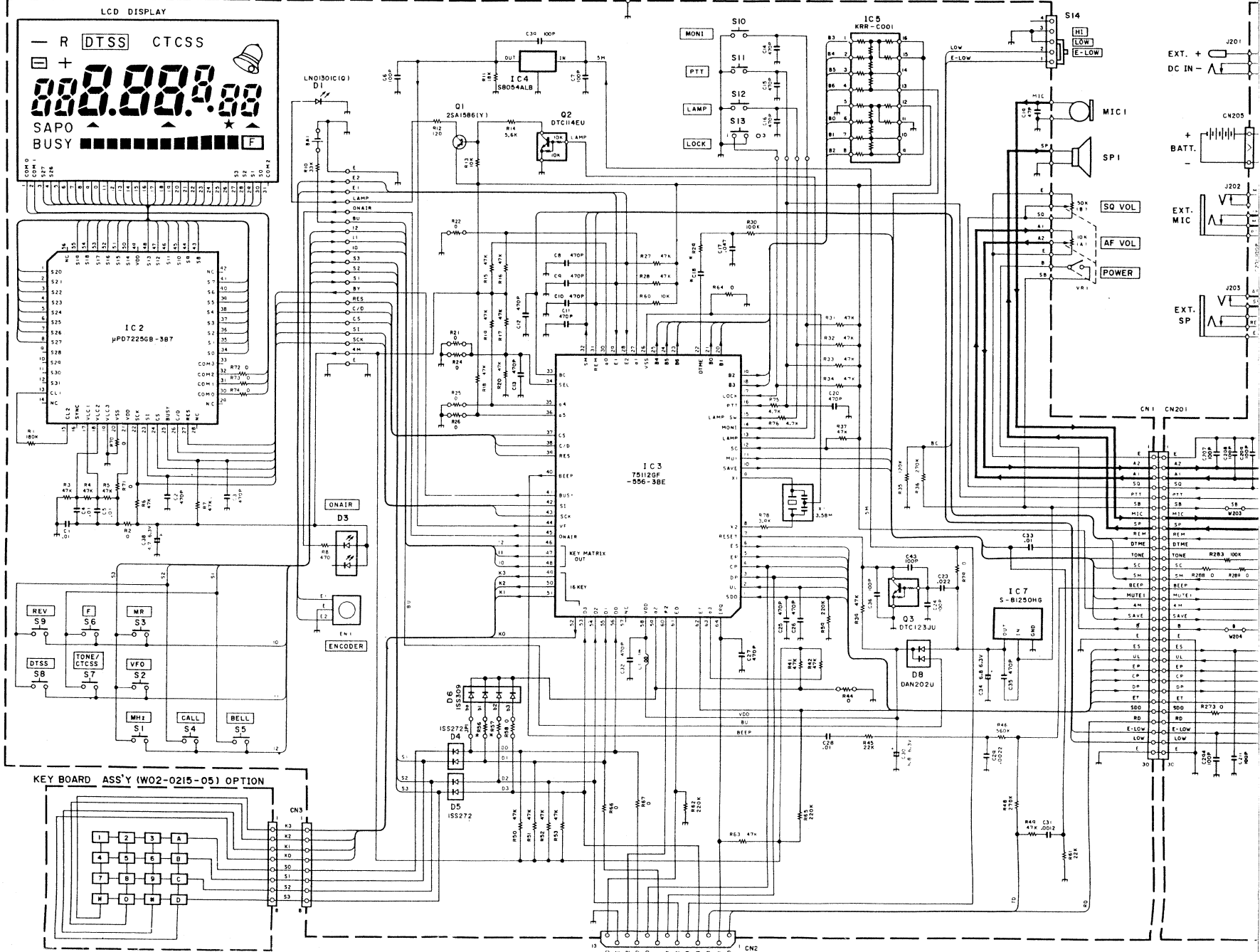


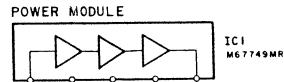
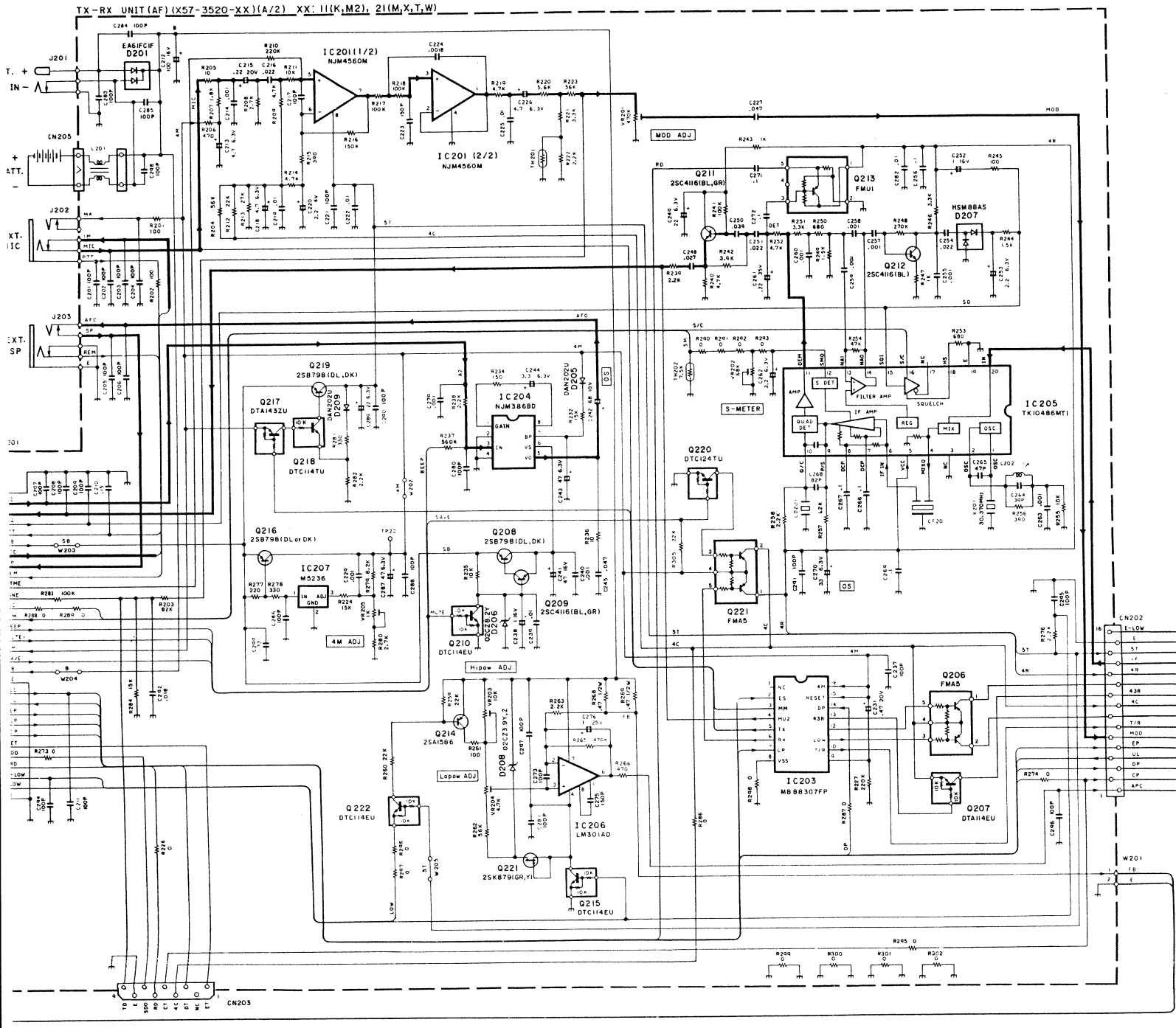
TH-46A/46AT/46E SCHEMATIC DIAGRAM

CONTROL UNIT (W02-089X-05) 9X: 93(K,M2), 94(M), 95(X,T,W)

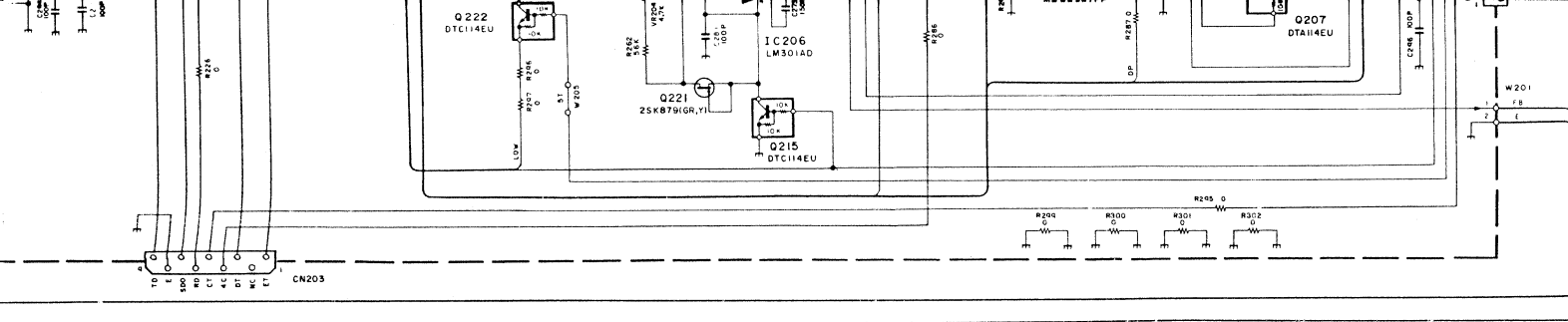


W02-089X-05	ORX	R57	R56	R29	C10	DTM UNIT
TH-46A	X	3	-	0	-	○
TH-46A	M2	3	-	0	-	○
TH-46A	M	4	-	-	-	○
TH-46A	X	5	0	0	18X	047
TH-46E	E,T					OPTION

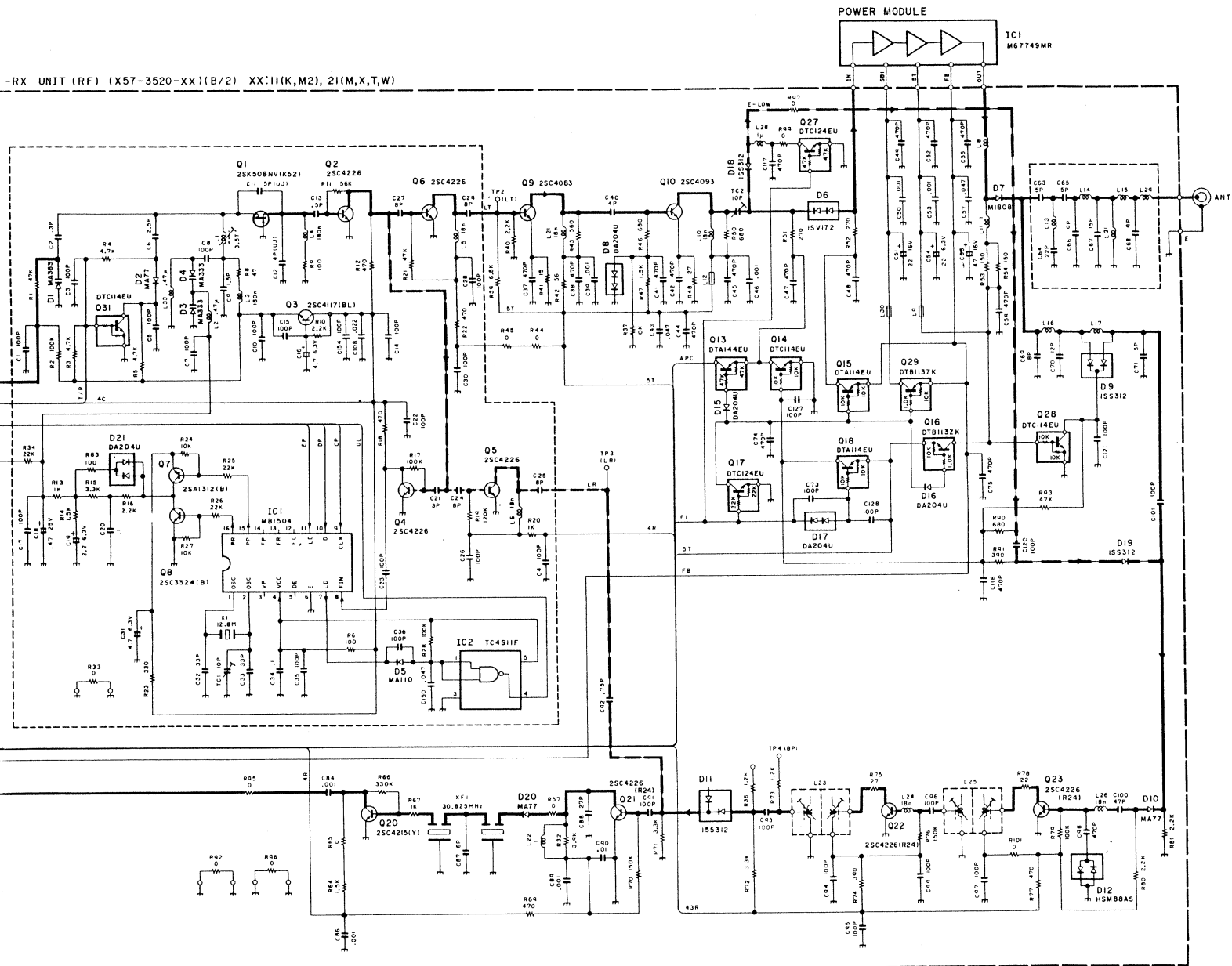
TX-RX UNIT (AF) (X57-3520-XX) (A/2) XX: 11(K,M2), 21(M,X,T,W)



-RX UNIT (RF) (X57-3520-XX) (B/2) XX: 11(K,M2), 21(M,X,T,W)

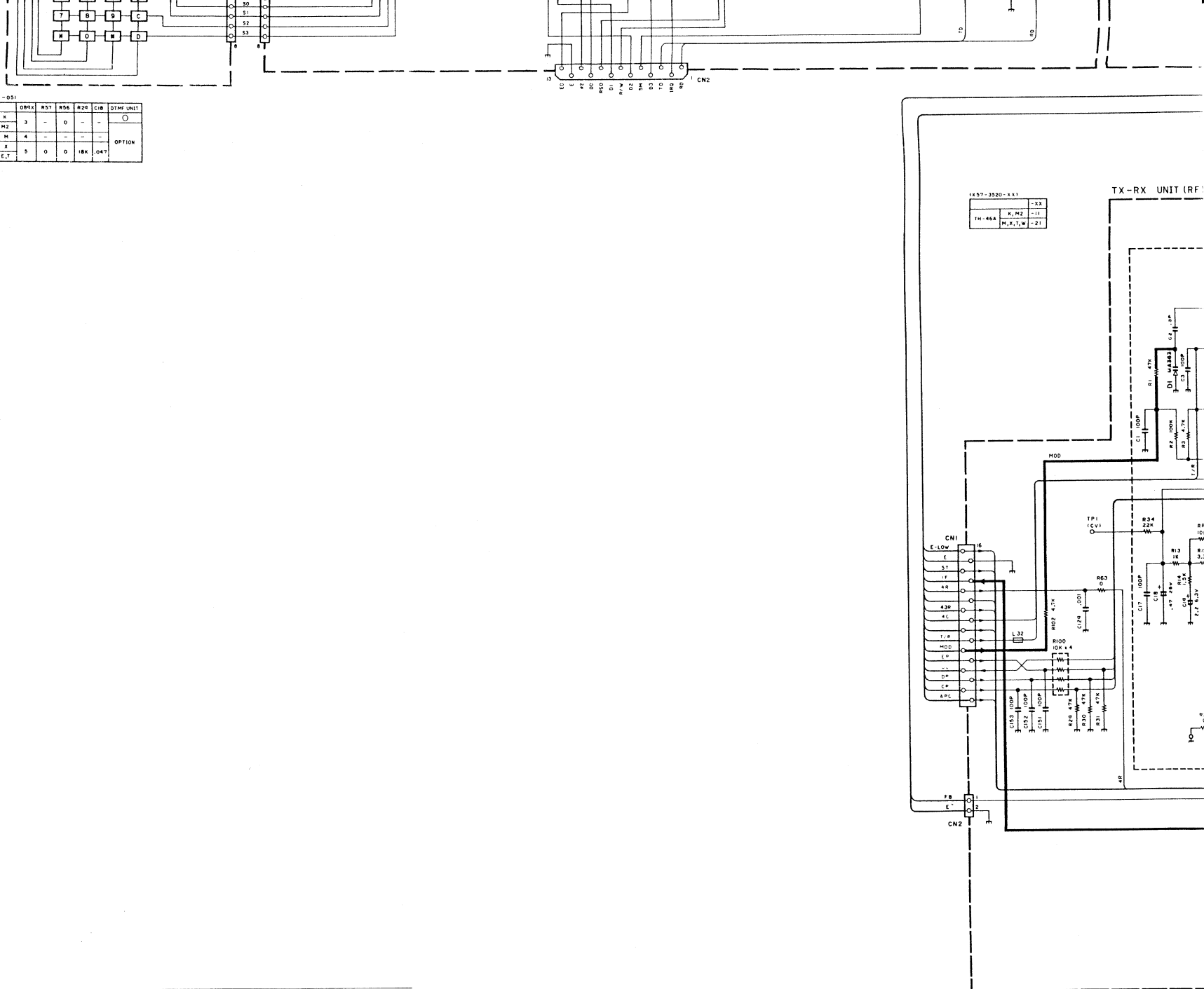


-RX UNIT (RF) (X57-3520-XX)(B/2) XX:1(K,M,2), 2(I,M,X,T,W)



W02-0BRX-051

	DBRX	RS7	RS6	R20	C18	DTMF UNIT
TH-46A	K	3	-	0	-	○
	M2	-	-	-	-	
	M	4	-	-	-	OPTION
TH-46A	X	-	-	-	-	
TH-46C	E, T	5	0	0	18K .047	



Note: _____
 Circuit is subject to change without notice due to advancements in technology.

TH-26/TH-46 2/2