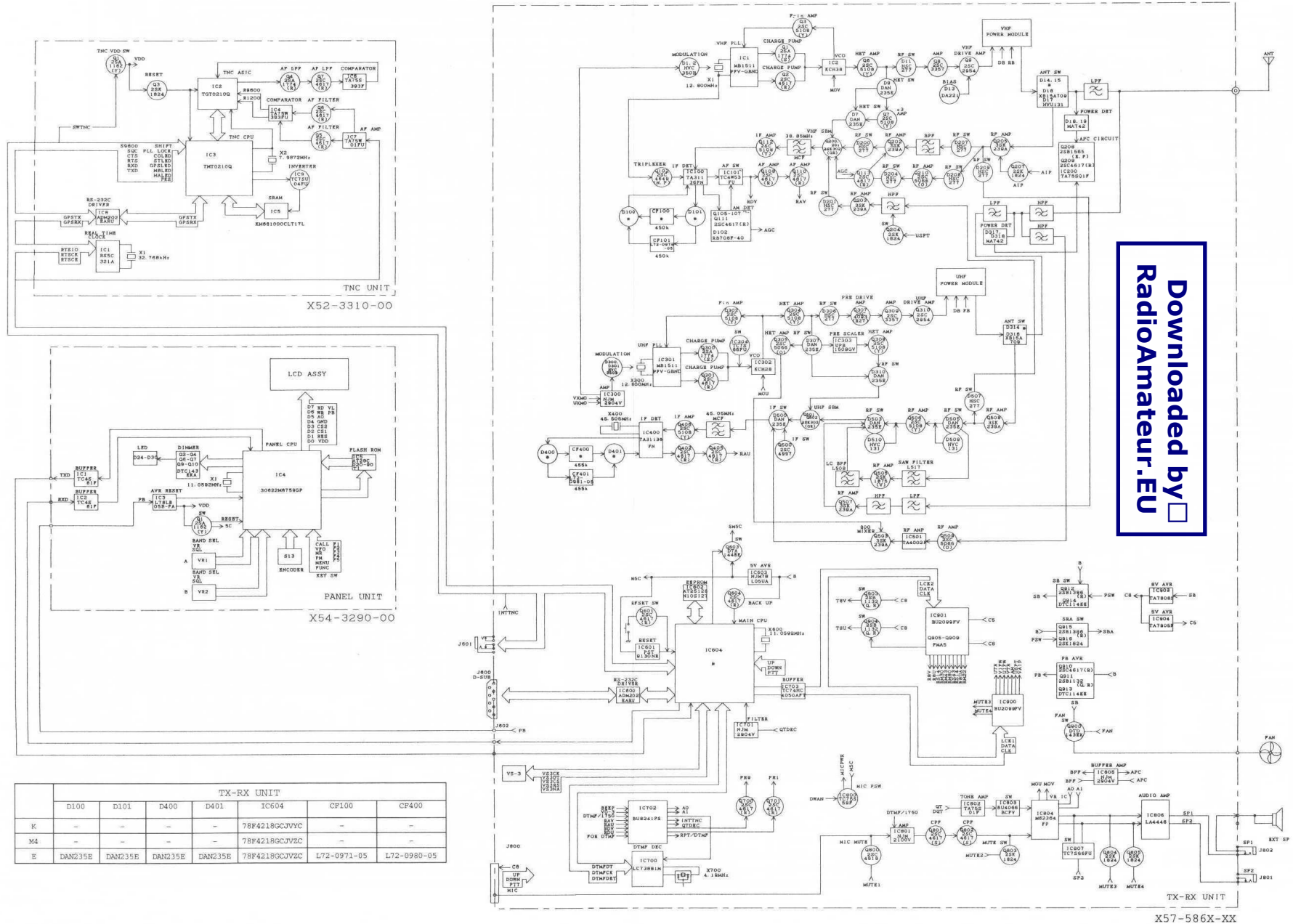


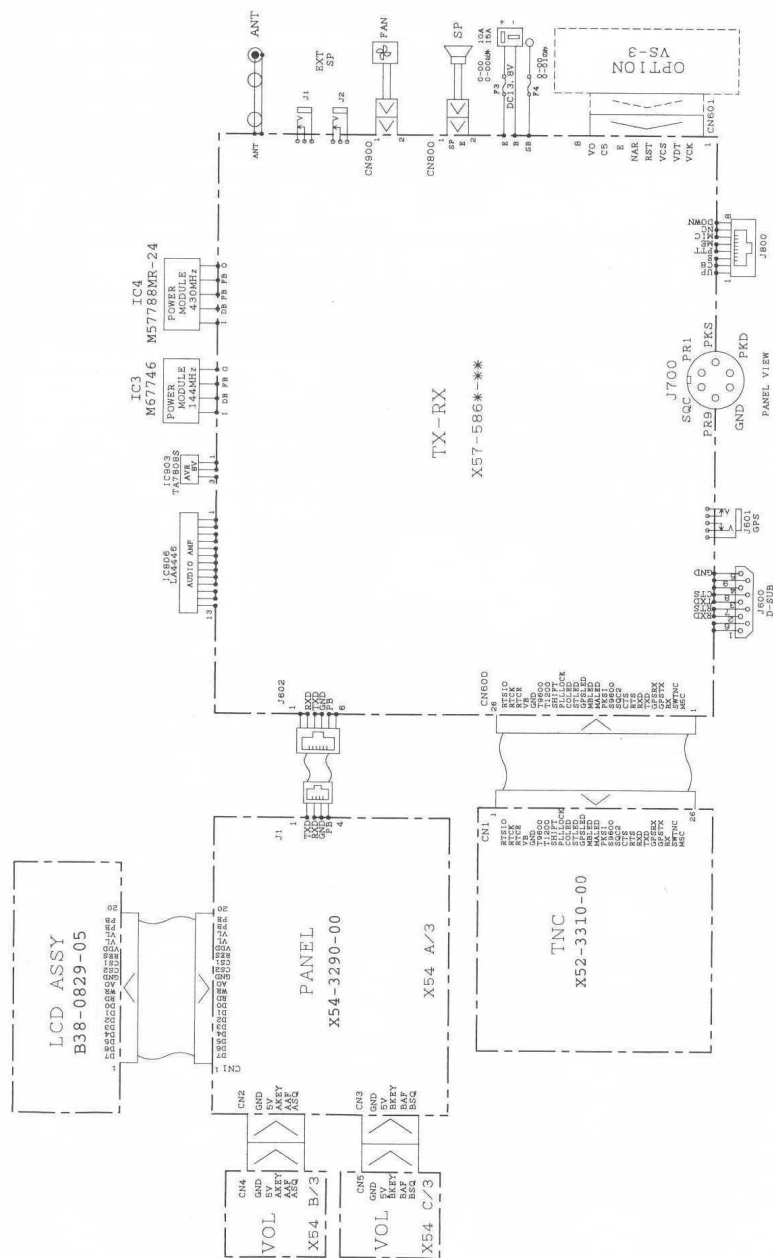
TM-D700A/E TM-D700A/E

BLOCK DIAGRAM



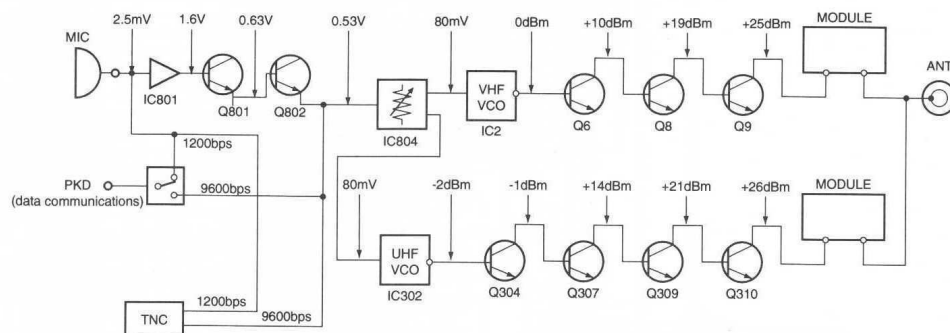
Downloaded by RadioAmateur.EU

WIRING DIAGRAM



LEVEL DIAGRAM

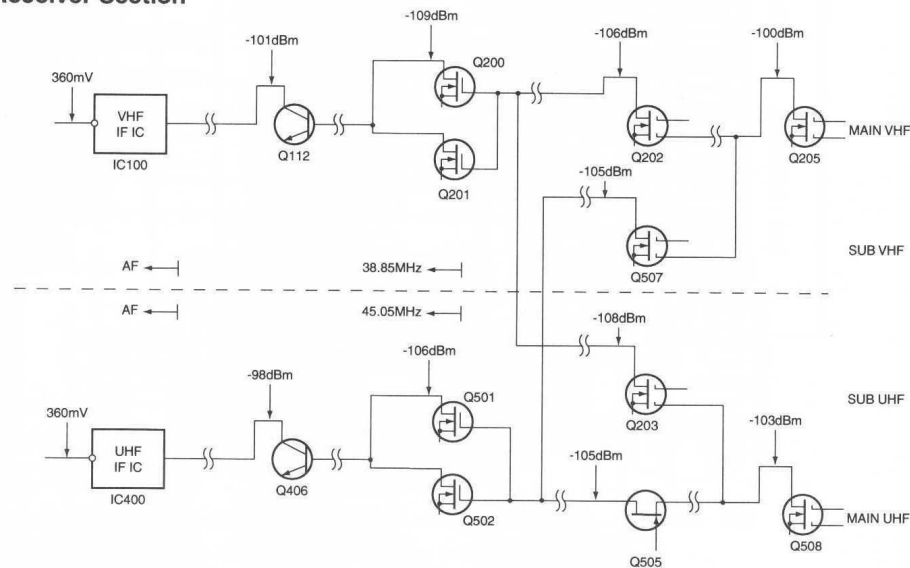
Transmitter Section



Note1: Set the AG so that the microphone socket input is 3kHz deviation at 1kHz modulation.
The data communication connector input level is 3kHz deviation at 1kHz modulation for 1200bps and 2kHz deviation at 1kHz modulation for 9600bps.

Note2: The transmit frequency is 145.0 or 435.0MHz.
Note3: The HI/MID/LOW switch is set to HI.
Note4: The measurements with the power meter, except for the ANT connector, are the values with the APC off.

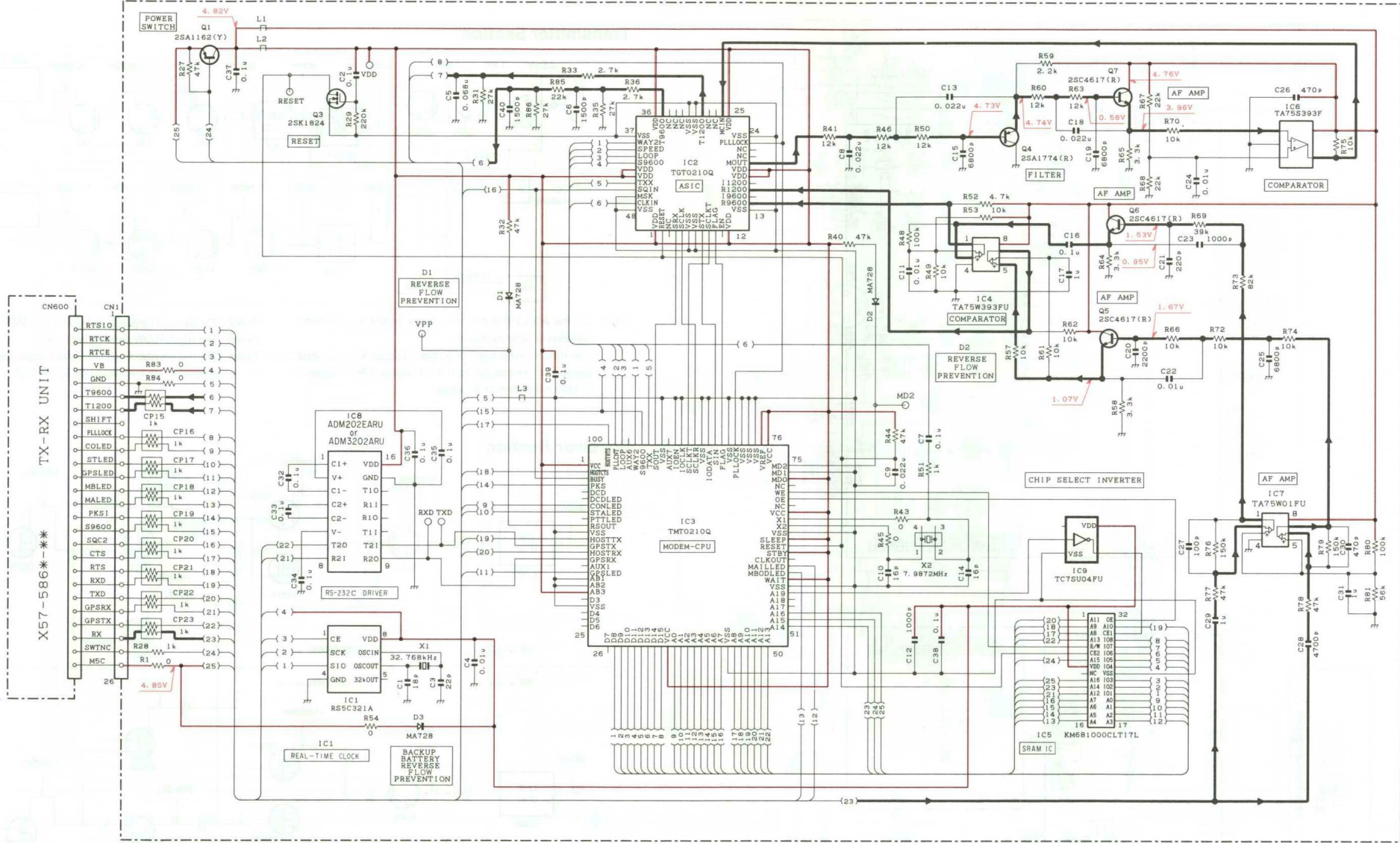
Receiver Section



Note1: The 12dB SINAD levels were plotted using a standard signal generator through a 0.01μF ceramic capacitor at each point from the RF to the first IF.

Note2: The AF levels were measured with an AF voltmeter when the -73dBm (50μV) standard signal generator signal modulated by a 1kHz modulation frequency and a 3kHz deviation was received and the AF output was adjusted to 0.63V/8Ω by the AF VR.

X52-3310-00 TNC UNIT



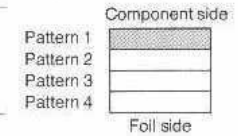
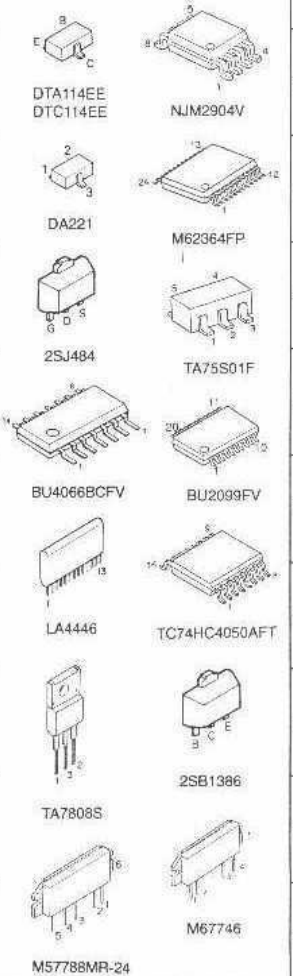
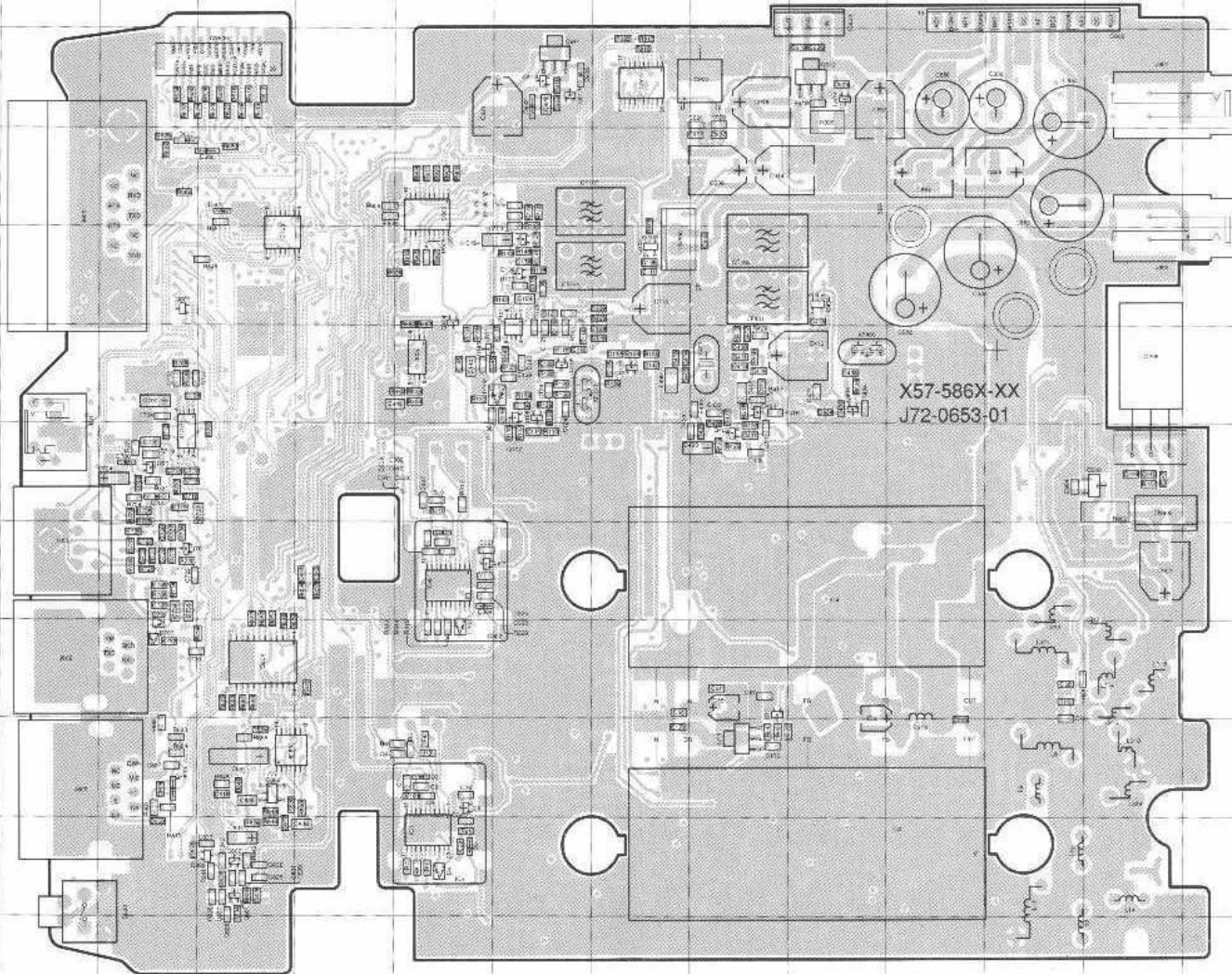
- | | | | | | | |
|------------------|----------------------|--------------------------------|-------------------|----------------------|---------------------|-------------------------------|
| X52-3310-00 | IC5 : KM681000CLT17L | IC8 : ADM202EARU or ADM3202ARU | Q1 : 2SA1162(Y) | X54-3290-00 | IC1, 2 : TC48B1F | Q1 : 2SA1162(Y) |
| D1-3 : MA728 | IC6 : TAT5S393F | IC9 : TC7SU04FU | Q3 : 2SK1824 | D2 : MA2S111 | IC3 : L78LRO5B-FA | Q2-4, 6, 7, 9, 10 : DTC143EKA |
| IC1 : RS5C321A | IC7 : TAT5W01FU | | Q4 : 2SA1774(R) | D3-23 : DA221 | IC4 : 30622M8759GP | |
| IC2 : TGT0210Q | | | Q5-7 : 2SC4617(R) | D24-30 : B30-2215-05 | IC5 : AT29C020-90T1 | |
| IC3 : TMT0210Q | | | | | | |
| IC4 : TAT5W393FU | | | | | | |

PC BOARD VIEWS TM-D700A/E

TX-RX UNIT
(Component side)

Ref. NO.	Address
IC1	H11
IC2	H11
IC3	L11
IC4	L8
IC101	I6
IC301	H8
IC302	H8
IC701	L7
IC703	F5
IC802	F10
IC803	F10
IC804	F9
IC805	H8
IC806	2N
IC900	H4
IC901	J3
IC903	L2
IC804	K3
Q1	H10
Q10	K10
Q11	K9
Q103	J5
Q104	H5
Q105	I6
Q106	I6
Q107	I6
Q108	I5
Q110	I5
Q111	H6
Q112	J6
Q208	O6
Q402	K6
Q404	L5
Q405	K7
Q406	L6
Q700	L7
Q701	F8
Q801	F11
Q802	F11
Q803	F11
Q807	E5
Q900	O7
Q910	I3
Q911	I3
Q912	L3
Q913	I3
Q914	L3
D3	H10
D4	H11
D5	H11
D102	I6
D302	H8
D303	I9
D304	H8
D601	F4
D606	F4
D607	E4
D700	E7
D701	E7
D702	F9
D703	L9
D800	F10
D902	I3
D903	I3

TX-RX UNIT (X57-586X-XX) Component side view



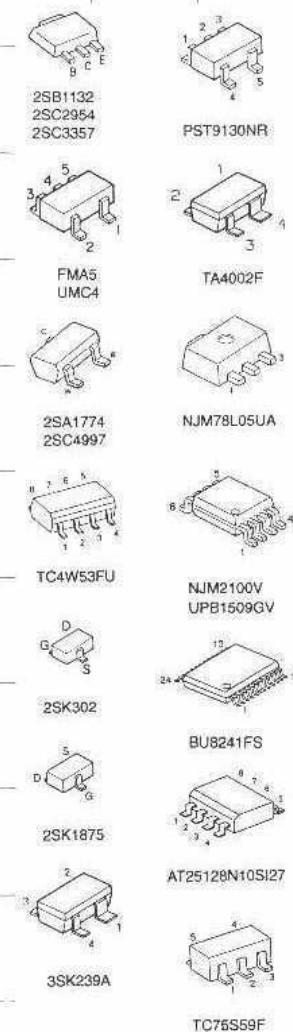
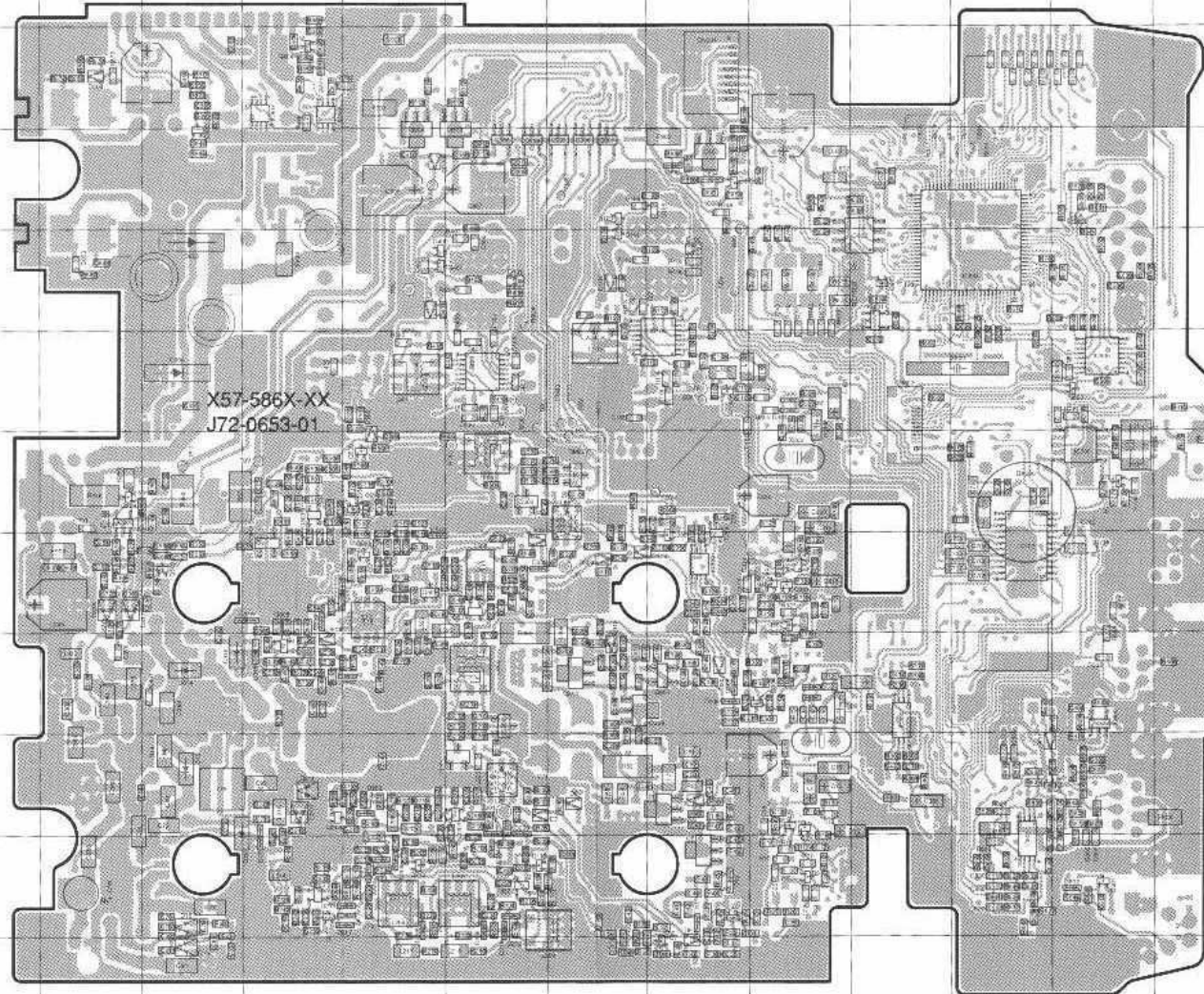
Downloaded by RadioAmateur.EU

TM-D700A/E PC BOARD VIEWS

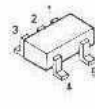
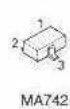
TX-RX UNIT (X57-586X-XX) Foil side view

TX-RX UNIT
(Foil side)

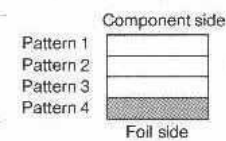
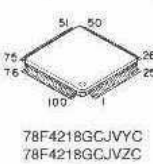
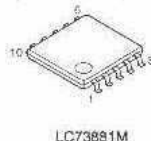
Ref.NO.	Address	Ref.NO.	Address
IC100	K6	Q603	M5
IC200	E7	Q604	K4
IC300	M9	Q702	O7
IC303	K8	Q800	N10
IC304	LB	Q804	G3
IC400	I6	Q805	F4
IC501	GB	Q903	I4
IC600	OE	Q904	H4
IC601	M5	Q905	I4
IC602	M5	Q906	J4
IC603	K4	Q907	J4
IC604	N5	Q908	I4
IC700	O7	Q909	J4
IC702	NR	D1	L9
IC800	OR	D2	L9
IC801	N11	D6	J10
IC807	G3	D7	I10
IC808	G3	D9	K12
Q1	L10	D11	K11
Q2	L10	D12	K11
Q3	L11	D13	K10
Q6	K11	D14	F10
Q7	K12	D15	F10
Q8	K11	D16	F11
Q9	K10	D17	G11
Q100	J4	D18	F11
Q101	J5	D19	F12
Q102	K6	D100	K5
Q113	I11	D101	J5
Q200	I9	D200	I11
Q201	I10	D201	I11
Q202	I11	D202	I11
Q203	I10	D203	H10
Q204	G10	D204	I11
Q205	G11	D205	I11
Q207	G11	D206	H11
Q209	E7	D207	H11
Q210	H11	D208	H11
Q300	LB	D209	H11
Q301	LB	D210	G10
Q302	LB	D211	G10
Q304	L9	D213	G11
Q305	H7	D214	G11
Q306	K7	D216	I11
Q307	K9	D217	G11
Q308	K8	D300	L6
Q309	J9	D301	L6
Q310	J9	D305	K9
Q400	H5	D306	K9
Q401	H5	D307	K9
Q500	H7	D309	J8
Q501	J7	D310	J8
Q502	I7	D312	J9
Q503	G7	D313	G8
Q505	H8	D314	F9
Q506	H8	D315	G9
Q507	I8	D316	F9
Q508	G9	D317	EB
Q509	FB	D318	EB
Q600	OE	D400	H5
Q601	O11	D401	I5



Ref.NO.	Address	Ref.NO.	Address
D500	I17	D602	O11
D502	I8	D604	K4
D503	I8	D605	K4
D505	G9	D801	N10
D507	H9	D803	E3
D509	GB	D900	H4
D510	H8	D804	F6
D600	O4	D905	F5



56

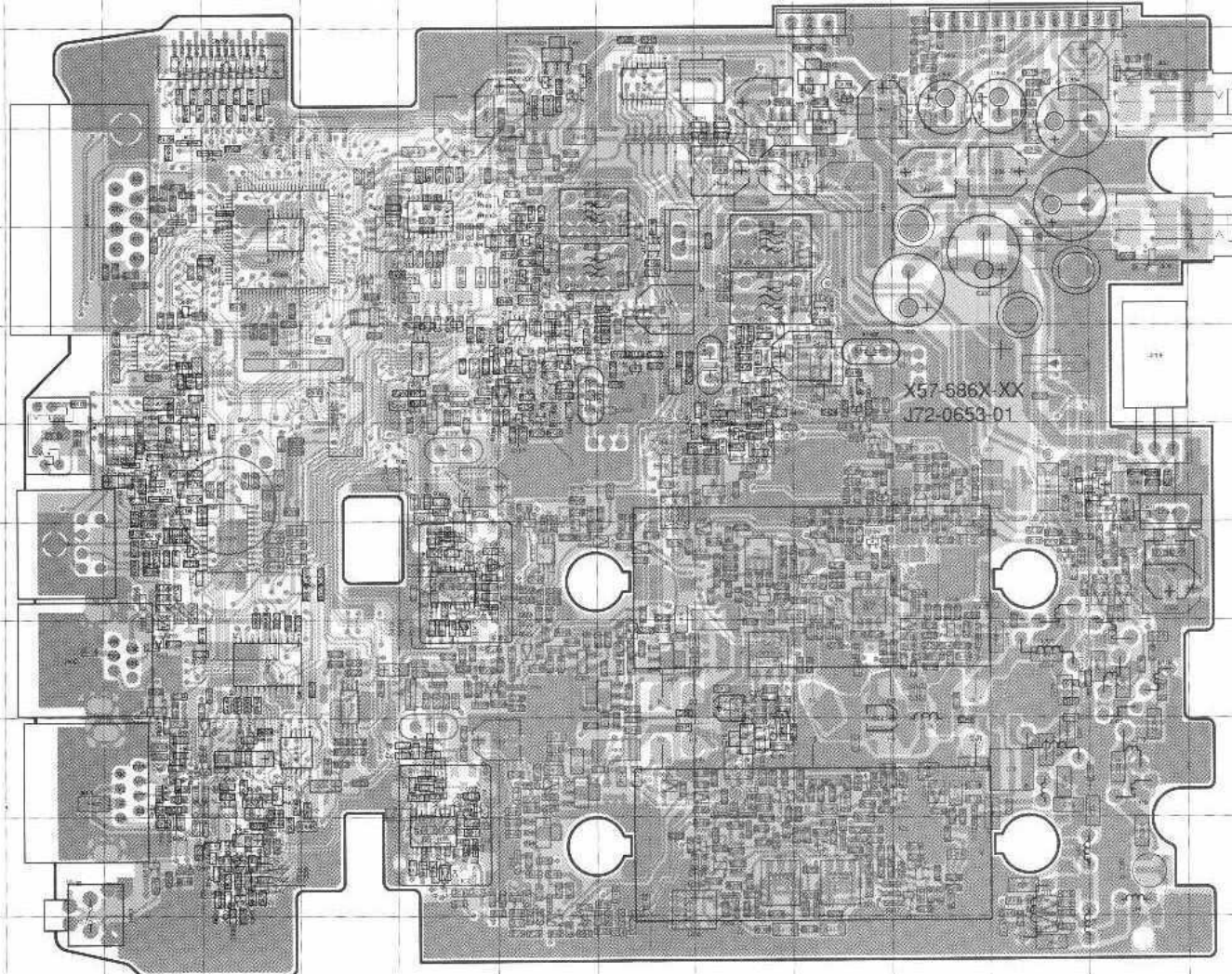


PC BOARD VIEWS TM-D700A/E

TX-RX UNIT
(Component side) + (Foil side)

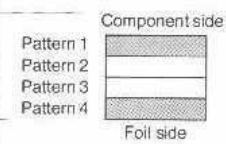
TX-RX UNIT (X57-586X-XX) Component side + Foil side view

Ref.NO.	Address	Ref.NO.	Address
IC1	H11	Q210	L11
IC2	H11	Q300	H8
IC3	L11	Q301	H8
IC4	L8	Q302	H8
IC100	I6	Q303	H8
IC101	I6	Q304	H8
IC200	O7	Q305	L7
IC300	G9	Q306	I8
IC301	H8	Q307	I9
IC302	H9	Q308	I8
IC303	I8	Q309	J9
IC304	H8	Q310	J9
IC400	K6	Q400	L5
IC501	M8	Q401	L5
IC600	E6	Q402	K6
IC801	O5	Q404	L5
IC802	G5	Q405	K7
IC803	I4	Q406	L6
IC604	F5	Q500	L7
IC700	E7	Q501	J7
IC701	E7	Q502	K7
IC702	F8	Q503	M7
IC703	F5	Q505	L8
IC800	E9	Q508	L8
IC801	F11	Q507	K8
IC802	F10	Q508	M9
IC803	I4	Q509	N8
IC804	F9	Q600	E6
IC805	H6	Q801	F11
IC806	ZN	Q803	G5
IC807	M5	Q604	I4
IC808	M3	Q700	E7
IC900	H4	Q701	L8
IC901	J9	Q702	F7
IC903	L2	Q800	E10
IC904	K3	Q801	F11
Q1	H10	Q802	F11
Q2	H10	Q803	F11
Q3	H11	Q804	M3
Q4	H10	Q805	N4
Q6	I11	Q807	E5
Q7	I12	Q900	O7
Q8	I11	Q903	K4
Q8	I10	Q904	L4
Q10	K10	Q905	K4
Q11	K9	Q906	J4
Q100	J4	Q907	J4
Q101	J5	Q908	K4
Q102	I6	Q909	J4
Q103	J5	Q910	I3
Q104	H5	Q911	I3
Q105	I6	Q912	L3
Q106	I6	Q913	I3
Q107	I6	Q914	L3
Q108	I5	D1	H9
Q110	I5	D2	H9
Q111	H6	D3	H10
Q112	J6	D4	H11
Q113	K11	D5	H11
Q200	K9	D6	J10
Q201	K10	D7	K10
Q202	K11	D9	I12
Q203	K10	D11	I11
Q204	M10	D12	I11
Q205	M11	D13	I10
Q207	M11	D14	N10
Q208	O6	D15	N10
Q209	O7	D16	M11
D17	M11	D202	K11
D18	N11	D203	L10
D19	N12	D204	K11
D100	I5	D205	K11
D101	J5	D206	L11
D102	I6	D207	L11
D200	K10	D208	L11
D201	K10	D209	L11
D210	M10	D210	M10
D211	M10	D211	M10
D213	L11	D213	L11
D214	L11	D214	L11
D216	K11	D216	K11
D217	L11	D217	L11
D300	H6	D300	H6
D301	H6	D301	H6
D302	H8	D302	H8
D303	H9	D303	H9
D304	H8	D304	H8
D305	I8	D305	I8
D306	I8	D306	I8
D307	I9	D307	I9
D308	J9	D308	J9
D310	J8	D310	J8
D312	J8	D401	K5
D313	M8	D500	L7
D314	N9	D509	K8
D315	M9	D603	K8
D316	N9	D605	M8
D317	N8	D507	L9
D318	O8	D509	M8
D400	L5	D610	L8
D600	E4	D600	E4
D601	F4	D601	F4
D602	E11	D602	E11
D604	I4	D604	I4
D605	I4	D605	I4
D606	I4	D606	I4
D607	F4	D607	F4
D608	E7	D700	E7
D701	L7	D701	L7
D702	E9	D702	E9
D703	E9	D703	E9
D800	E10	D800	E10
D801	F10	D801	F10
D803	O3	D803	O3
D900	L4	D900	L4
D902	I3	D902	I3
D903	I3	D903	I3
D904	N6	D904	N6
D905	N5	D905	N5



Downloaded by RadioAmateur.EU

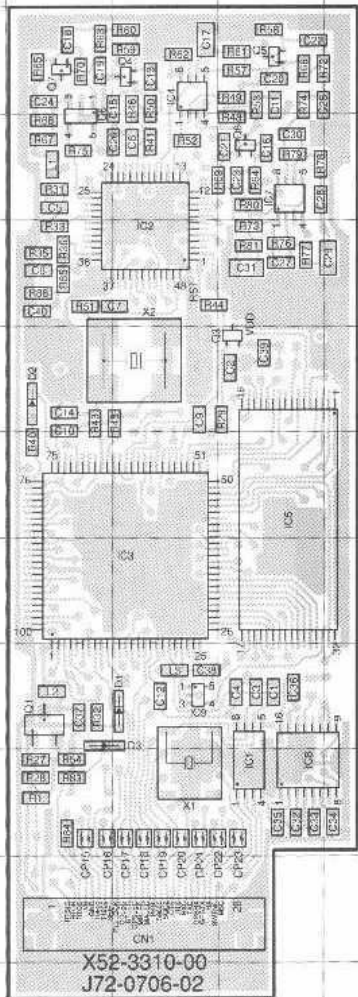
● Connect 1 and 4.



TM-D700A/E PC BOARD VIEWS

TNC UNIT (X52-3310-00)

Component side view



TNC UNIT
(Component side)

Ref No.	Address
IC1	10D
IC2	5C
IC3	8C
IC4	3C
IC5	7D
IC6	4B
IC7	4D
IC8	10D
IC9	9C
Q1	9B
Q3	6D
Q4	3C
Q5	3D
Q6	4D
Q7	3B
D1	9C
D2	8B
D3	10B



2SA1774



TA75S393F



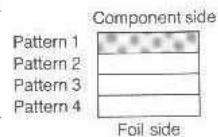
2SA1162
2SC4617



TGT0210Q
TMT0210Q

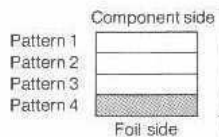
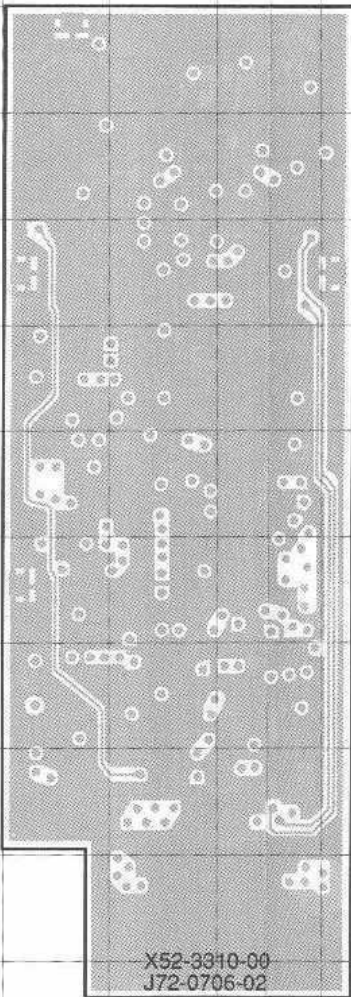


KM681000CLT17L



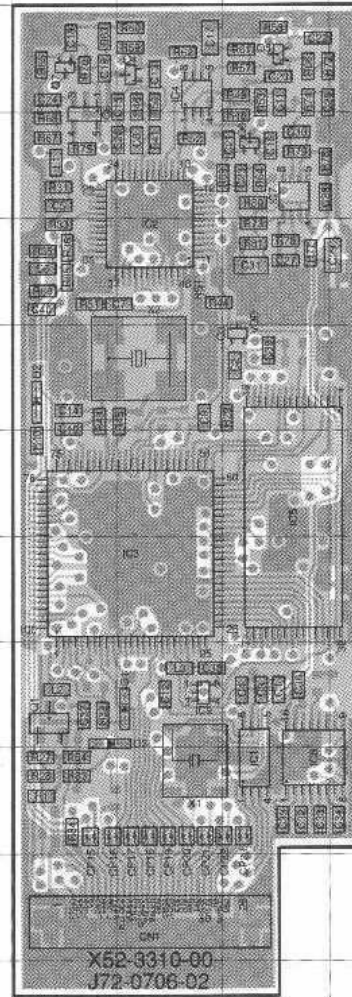
TNC UNIT (X52-3310-00)

Foil side view



TNC UNIT (X52-3310-00)

Component side + Foil side view



TNC UNIT
(Component side) + (Foil side)

Ref. NO.	Address
IC1	10P
IC2	5O
IC3	8O
IC4	3O
IC5	7P
IC6	4N
IC7	4P
IC8	10P
IC9	9O
Q1	9N
Q3	6P
Q4	3O
Q5	3P
Q6	4P
Q7	3N
D1	9O
D2	8N
D3	9N



2SA1774



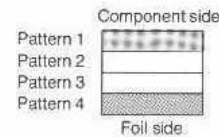
TA75S393F



2SA1162
2SC4617



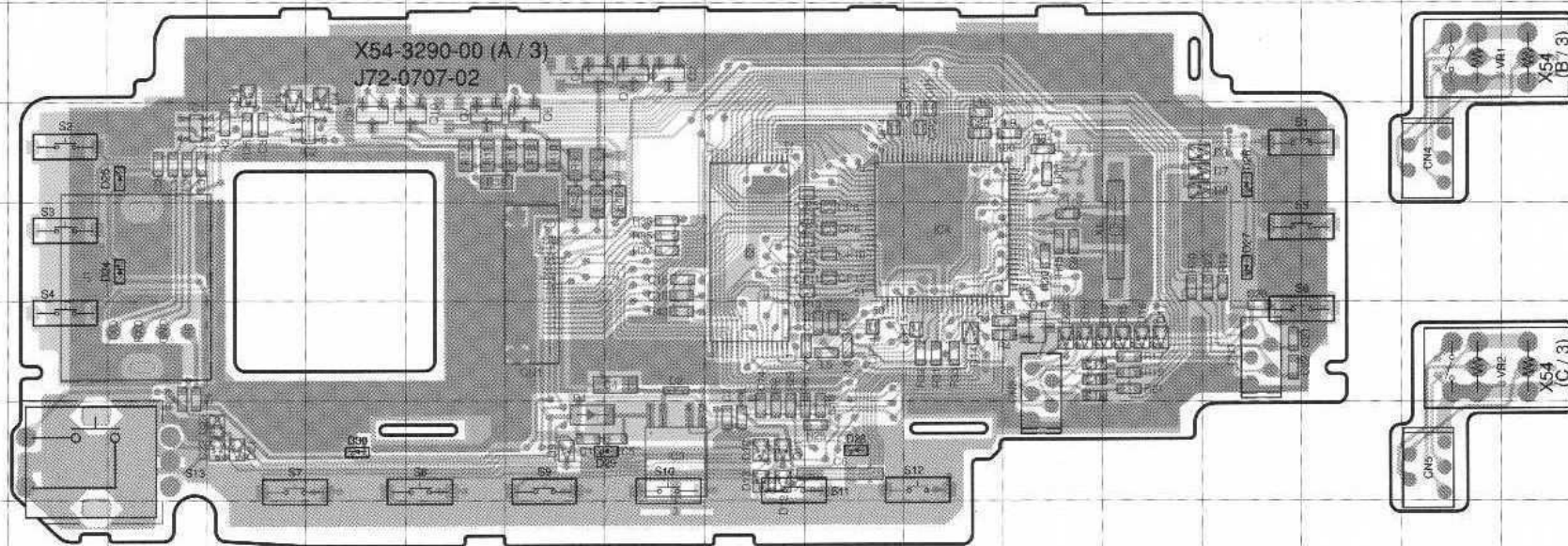
KM681000CLT17L



● Connect 1 and 4.



PC BOARD VIEWS TM-D700A/E

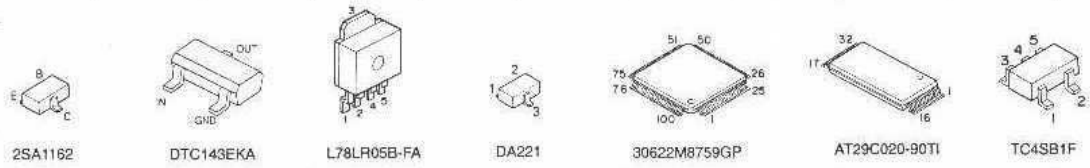
PANEL UNIT (X54-3290-00) Component side view



PANEL UNIT
(Component side)

Ref NO.	Address
IC1	5C
IC2	5E
IC3	8H
IC4	8K
IC5	5I
Q1	7L
Q2	4H
Q3	4H
Q4	4G
Q6	5G
Q7	5F
Q9	5E
Q10	5F
D1	8G
D2	7H
D3	5M
D4	4E
D5	4D
D6	4D
D7	5M
D8	5M
D9	8G
D10	8I
D11	8I
D12	8I
D13	8I
D14	7K
D15	7M
D16	7M
D17	7M
D18	7L
D19	7M
D20	7L
D21	8D
D22	8D
D23	8D
D24	6C
D25	5C
D26	5N
D27	6N
D28	8J
D29	8H
D30	8E

Component side
 Pattern 1 
 Pattern 2 
 Foil side



TM-D700A/E PC BOARD VIEWS

Downloaded by
RadioAmateur.EU

PANEL UNIT (X54-3290-00) Foil side view

PANEL UNIT
(Foil side)

Ref.NO.	Address
IC1	5Q
IC2	5O
IC3	8L
IC4	6I
IC5	6K
O1	7H
Q2	4L
Q3	4L
Q4	4M
Q6	5M
Q7	5N
Q8	5O
Q10	5N
D1	8M
D2	7L
D3	5G
D4	4O
D5	4P
D6	4P
D7	5G
D8	5G
D9	8M
D10	8K
D11	8K
D12	8K
D13	8K
D14	7I
D15	7G
D16	7G
D17	7G
D18	7H
D19	7G
D20	7H
D21	8P
D22	8P
D23	8P
D24	6Q
D25	5Q
D26	5F
D27	6F
D28	8J
D29	8L
D30	8O

