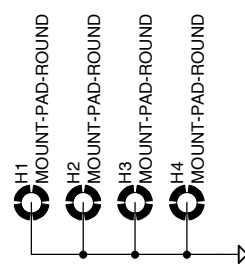


T1 USES A BN-73-202 CORE WITH 3T IN THE SECONDARY AND 4T IN THE PRIMARY. USE #24 WIRE.

L3 AND L4 ARE 500 UH CHOKES. THESE CAN BE MOLDED WITH A 100 MA CURRENT RATING OR WOUND ON BN-43-202 CORES USING 20T #26 WIRE

<h1>The Designing Cat</h1> <p>281 Garland Road West Newfield, Maine 04095</p>	
<h3>GALI-74 BASED</h3>	
File Name:	RXLOOP_AMP
Document Number:	
Date:	10/26/2016 8:45 PM
Rev:	03.2
Sheet:	1/1



Drawn:	RLS	Checked:	RLS
Proprietary Property of The Designing Cat LLC			