

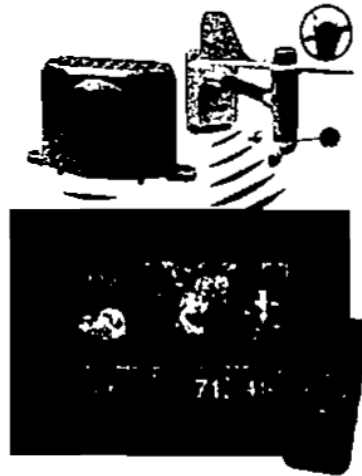


Tomorrow's Weather Today™

WIRELESS PROFESSIONAL WEATHER STATION & PHOTO ALBUM WITH 7" TFT SCREEN

Model 308-807

Quick Setup Guide



This product offers:



INSTANT TRANSMISSION is the state-of-the-art new wireless transmission technology, exclusively designed and developed by La Crosse Technology®. *INSTANT TRANSMISSION* offers you an immediate update of all the outdoor data measured from the transmitters: follow the climatic variations in real-time!

INVENTORY OF CONTENTS

1. Wireless Display
2. IR Remote Control (98-W2329-000)
3. A/C adapter cord 5-Volt.
4. Wireless Wind/Thermohygro transmitter (W132-Q)
5. Wireless Rain Gauge (W174-Q)

FEATURES:

- Time display in 12/24 hour time format
- Manual set time and date.
- Time alarm.
- Calendar display (date, month, year)
- Moon phase with 8 displays.
- 5 weather icons (sunny, partly cloudy, cloudy, rainy & stormy).
- Temperature display in °F/°C: from -4 °F to +140 °F
- Humidity display in RH%: from 20% to 99%
- Relative air pressure reading in inHg/hPa:
- 6-hour pressure history graph
- Wind speed and wind gust displayed in mph, km/h, m/s, and knots: 0 to 67 mph
- Wind chill in °F/°C: from -4 °F to +140 °F
- Wind speed & direction with LCD compass display (16 steps)
- Rainfall display in inch/mm: from 0" to 393.6"
- Rainfall: total rain, last 24h, last week, last month
- Memory: Supports USB flash drive (up to 32GB), SD & MMC cards (up to 32GB)

INITIAL SETUP:

- WIRELESS DISPLAY:
Plug in the 5.0V adapter into the adapter socket on the right for basic operation.
- IR REMOTE CONTROL:
Pull out the battery insulation sheet from the bottom of the IR remote control.
- PHOTOS:
Save photos (Jpeg) to a USB flash drive, SD (secure digital) or MMC (multi media card) memory cards.
Insert memory device into the wireless display.
- WIND/THERMOHYGRO SENSOR:
Select a mounting location within range of the wireless display.
Calibrate the direction of the wind: Hold the wind vane pointing due north and do not allow it to turn.
Insert 2-AA batteries according to the polarity indicated. The red LED indicator above the battery cover of the anemometer will flash few times right after battery installation.
- RAIN GAUGE:
Select a mounting location within range of the wireless display.
Lift the rain gauge cover off its base. Then carefully remove the packing tape from the bucket assembly.
Open battery cover and insert 2-AA batteries according to the polarity indicated. Close the battery cover. Replace & lock the rain gauge cover on the base.
- SEARCH FOR SENSORS:
Go to the wireless display and enter SET UP mode.

Scroll down to **WIRELESS SENSOR RECEPTION** and select **SEARCH NOW** then exit. The wireless display will search for all remote sensors. If remote sensors are not displayed after 2 minutes, move the remote sensors closer and search again.

- With display working and reading sensors use the button on the remote control to view weather and/or photos.

DISPLAY MODES:

There are 5 display modes in the menu selection. Use the buttons on the wireless display or on the IR remote control to access the different display modes.

Press **LEFT ARROW** button or **RIGHT ARROW** button to select, and then press **ENTER** to enter the selected display mode.



SETUP



PHOTO



WEATHER



**WEATHER
& PHOTO**



**CALENDAR
& PHOTO**

SETUP MODE:

There are three screens of setup information. Press the **UP ARROW** or **DOWN ARROW** buttons to move through each screen and select an item to set. Press the **RIGHT ARROW** to select the value to

change. Press **ENTER** to confirm each setting before moving to the next.

Screen one:

Language: Select between English, Dutch & French

Slideshow Time: Select between 3s, 5s, 15s, 1 min, 15 min & 1 hour
for *photo slideshow mode*

Transition Effect: Select the transition effect of the *photo slideshow mode*.
Chose from: Random, Fading, Expand Top, Expand Bottom, Expand Middle,
Off, Bottom to Top, Top to Bottom, Left to Right, Right to Left, Door Close, Door
Open, Horizontal and Vertical.

Photo repeat mode: Select between random, manual or repeat all, for the
photo slideshow mode

Display mode: Select the photo display mode (cinema, stretch, crop)

On/Off Timer 1 - On: Adjust the first automatic power on time in HH:MM;
enable or disable

On/Off Timer 1 - Off: Adjust the first automatic power off time in HH:MM;
enable or disable

On/Off Timer 2 - On: Adjust the second automatic power on time in HH:MM;
enable or disable

On/Off Timer 2 - Off: Adjust the second automatic power off time in HH:MM;
enable or disable.

Power saving option: select when to tum on or off the wireless display
automatically throughout the day using the On/Off timer 1 or 2.

Brightness: Select the brightness of the display from level 1 to 16

Screen two:

Contrast: Select the contrast of the display from level 1 to 16

Saturation: Select the saturation of the display from level 1 to 16

Radio-Controlled Reception: (This function is not available for this unit. Please keep this setting to "Off")

Time Zone: (This function is not available for this unit. Please keep this setting to "Ohr")

Time/Date: Adjust: Year, Month, Date, Hour, Minute

Calendar Display Format: Select between Day/Month or Month/Day display

Time Format: Select between 24 or 12-hour formats

Alarm: Adjust the alarm time and enable/disable the alarm

Wireless Sensor Reception: Automatic – default RF reception mode
Search now – Search for remote sensor

Temperature Unit: Select between degree C & F for temperature

Screen three:

Weather Forecast: Select between sunny, partly cloudy, cloudy, rainy & stormy

Rainfall unit: Select between mm & inch

Wind unit: Select between m/s, knots, mph & km/h

Sea Level Pressure: Adjust the sea level pressure for your local area see chart below. Pressure must be set in hPa but can be displayed in inHg.

Pressure Unit: Select pressure unit between hPa, mmHg, inHg or mb

Remote Channel Display: Automatic – Show **indoor** and the channel(s) being registered

Indoor & Channel 1 only – Shows only channel 1 reading only

Indoor & Channel 2 only – Shows only channel 2 reading only

Indoor & Channel 3 only – Shows only channel 3 reading only

NOTE: Channel 1 is the Wind/Thermohygro sensor. Channels 2 & 3 are only available if extra Thermohygro sensors were purchased.

Clear All Rainfall Record Now: Yes / No (clears hourly, daily, weekly, monthly and total rain)

Default Setting: Yes / No (All settings default back to set up).

S/W Version: Software version (not upgradeable)

Air pressure is adjusted in the set up menu in hPa (hectopascal).

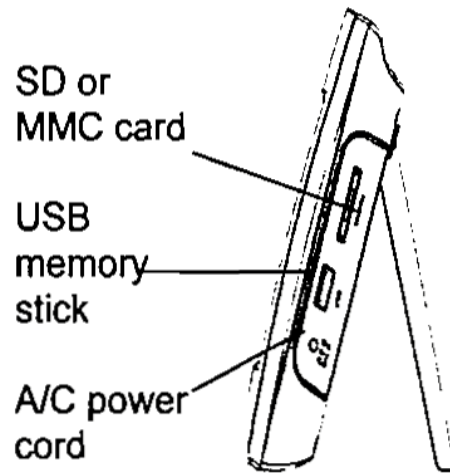
Please use this conversion chart to set the relative pressure.

Pressure can be displayed in inHg (inches of mercury), but needs to be set in hPa.

Conversion Chart for InHg to hPa (InHg / .02953)= hPa

28.5 = 965.1202	29.14 = 986.7931	29.78 = 1008.468	30.42 = 1030.139	31.06 = 1051.812
28.52 = 965.7975	29.16 = 987.4704	29.8 = 1009.143	30.44 = 1030.816	31.08 = 1052.489
28.54 = 966.4748	29.18 = 988.1476	29.82 = 1009.821	30.46 = 1031.493	31.1 = 1053.166
28.56 = 967.152	29.2 = 988.8249	29.84 = 1010.498	30.48 = 1032.171	31.12 = 1053.844
28.58 = 967.8293	29.22 = 989.5022	29.86 = 1011.175	30.5 = 1032.848	31.14 = 1054.521
28.6 = 968.5066	29.24 = 990.1795	29.88 = 1011.852	30.52 = 1033.525	31.16 = 1055.198
28.62 = 969.1839	29.26 = 990.8568	29.9 = 1012.53	30.54 = 1034.203	31.18 = 1055.875
28.64 = 969.8612	29.28 = 991.534	29.92 = 1013.207	30.56 = 1034.88	31.2 = 1056.553
28.66 = 970.5384	29.3 = 992.2113	29.94 = 1013.884	30.58 = 1035.557	31.22 = 1057.23
28.68 = 971.2157	29.32 = 992.8886	29.96 = 1014.561	30.6 = 1036.234	31.24 = 1057.907
28.7 = 971.893	29.34 = 993.5659	29.98 = 1015.239	30.62 = 1036.912	31.26 = 1058.584
28.72 = 972.5703	29.36 = 994.2431	30 = 1015.916	30.64 = 1037.589	31.28 = 1059.262
28.74 = 973.2475	29.38 = 994.9204	30.02 = 1016.593	30.66 = 1038.266	31.3 = 1059.939
28.76 = 973.9248	29.4 = 995.5977	30.04 = 1017.271	30.68 = 1038.943	31.32 = 1060.618
28.78 = 974.6021	29.42 = 996.275	30.06 = 1017.948	30.7 = 1039.621	31.34 = 1061.294
28.8 = 975.2794	29.44 = 996.9523	30.08 = 1018.625	30.72 = 1040.298	31.36 = 1061.971
28.82 = 975.9567	29.46 = 997.6295	30.1 = 1019.302	30.74 = 1040.975	31.38 = 1062.648
28.84 = 976.6339	29.48 = 998.3068	30.12 = 1019.98	30.76 = 1041.653	31.4 = 1063.325
28.86 = 977.3112	29.5 = 998.9841	30.14 = 1020.657	30.78 = 1042.33	31.42 = 1064.003
28.88 = 977.9885	29.52 = 999.6614	30.16 = 1021.334	30.8 = 1043.007	31.44 = 1064.68
28.9 = 978.6658	29.54 = 1000.339	30.18 = 1022.012	30.82 = 1043.684	31.46 = 1065.357
28.92 = 979.343	29.56 = 1001.016	30.2 = 1022.689	30.84 = 1044.362	31.48 = 1066.035
28.94 = 980.0203	29.58 = 1001.693	30.22 = 1023.366	30.86 = 1045.039	31.5 = 1066.712
28.96 = 980.6976	29.6 = 1002.37	30.24 = 1024.043	30.88 = 1045.716	31.52 = 1067.389
28.98 = 981.3749	29.62 = 1003.048	30.26 = 1024.721	30.9 = 1046.393	31.54 = 1068.066
29 = 982.0522	29.64 = 1003.725	30.28 = 1025.398	30.92 = 1047.071	31.56 = 1068.744
29.02 = 982.7294	29.66 = 1004.402	30.3 = 1026.075	30.94 = 1047.748	31.58 = 1069.421
29.04 = 983.4067	29.68 = 1005.08	30.32 = 1026.752	30.96 = 1048.425	31.6 = 1070.098
29.06 = 984.084	29.7 = 1005.757	30.34 = 1027.43	30.98 = 1049.103	31.62 = 1070.775
29.08 = 984.7613	29.72 = 1006.434	30.36 = 1028.107	31 = 1049.78	31.64 = 1071.453
29.1 = 985.4385	29.74 = 1007.111	30.38 = 1028.784	31.02 = 1050.457	31.66 = 1072.13
29.12 = 986.1158	29.76 = 1007.789	30.4 = 1029.462	31.04 = 1051.134	31.68 = 1072.807

Photo Mode:

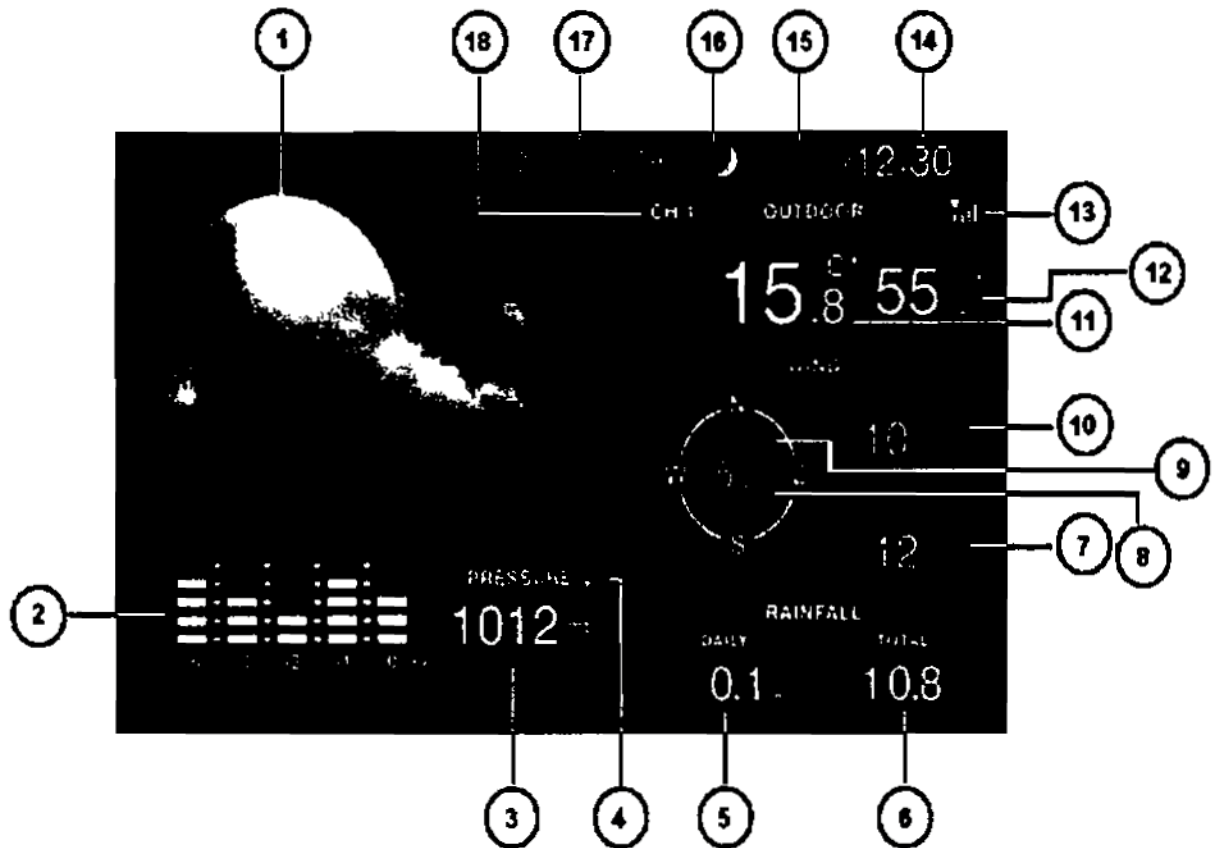


Supports photos in JPEG format. Will read USB flash drive, SD (secure digital) memory card, or MMC (multi media card) memory card.

Insert your memory device (USB memory stick, SD or MMC card) the connector on the side of the wireless display when the unit is off. Turn on the wireless display and enter PHOTO mode to view the photos.

- Press the LEFT ARROW or RIGHT ARROW button to view the next or previous photo
- Press SLIDESHOW to enable or disable the slideshow
- Press ZOOM IN to enlarge the photo (press repeatedly to resume to the original photo size)
- Press ROTATE to rotate the photo

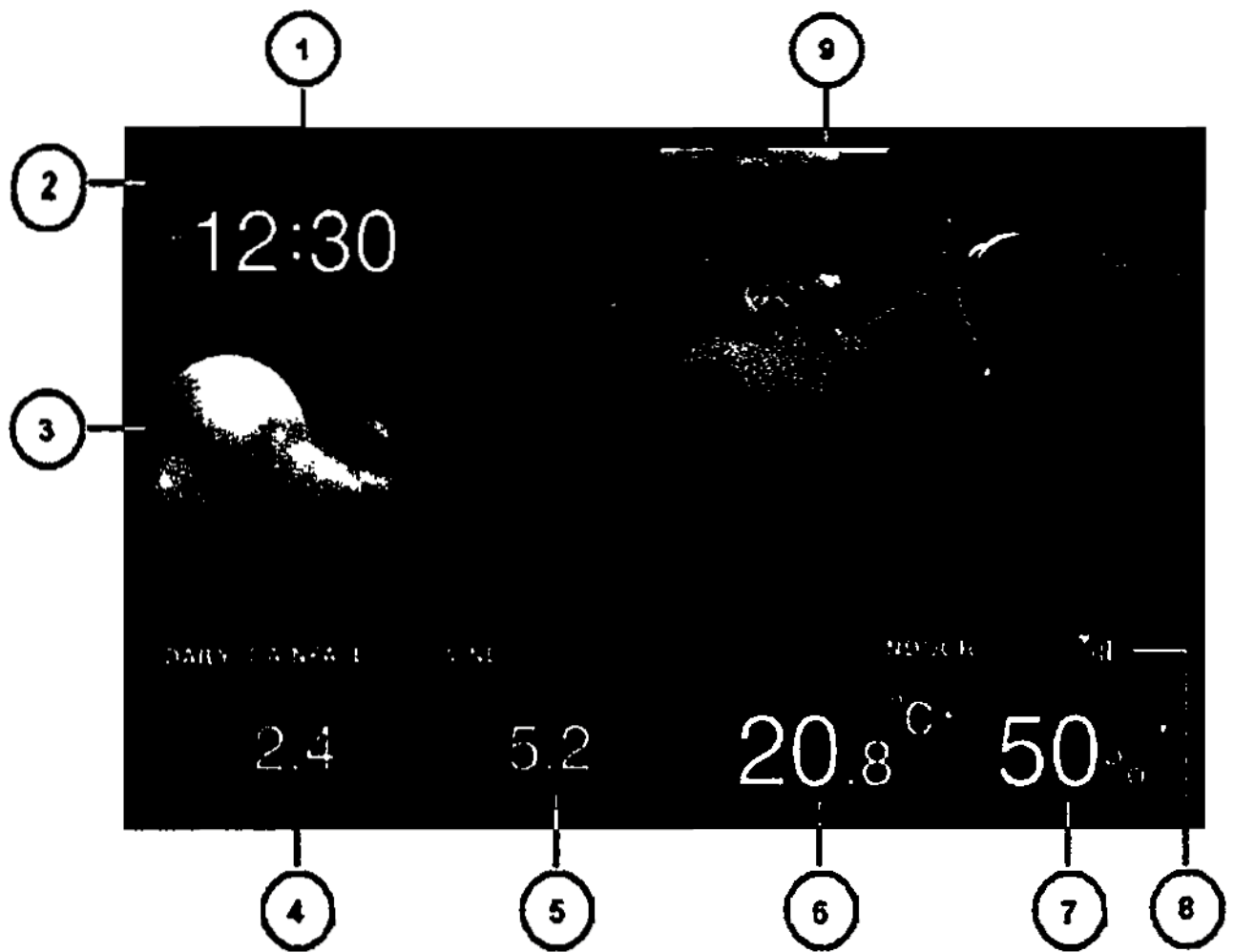
To set the time interval & transition effect of the slideshow, enter the SETUP mode.



Weather Mode

- 1) Weather forecast – sunny, partly cloudy, cloudy, rainy & stormy
- 2) Pressure bar chart – shows pressure level & trend of the past 6 hours
- 3) Barometric pressure - pressure reading (refer SETUP mode for pressure unit setting)
- 4) Pressure trend – rising, steady or falling
- 5) Daily, weekly or monthly rainfall in inch or mm

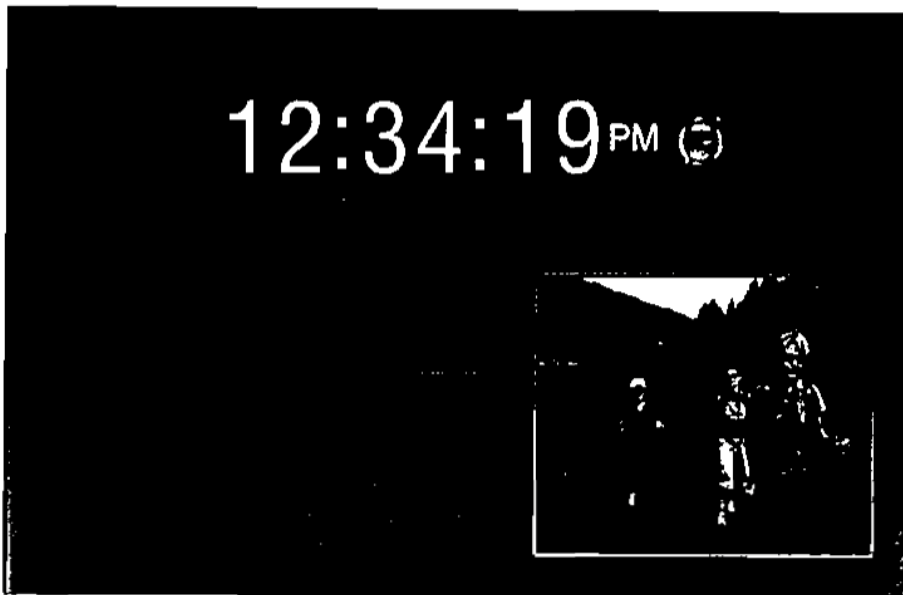
- 6) Total Rainfall in inch or mm
- 7) Wind chill in degree F or C
- 8) Average wind speed in m/s, knots, mph & km/h
- 9) Wind direction
- 10) Gust wind speed in m/s, knots, mph & km/h
- 11) Outdoor or indoor temperature in degree C or F
(with trend – rising, steady or falling)
- 12) Outdoor or indoor humidity
(with trend – rising, steady or falling)
- 13) RF signal indicator – flashes when it is searching for RF signal from remote sensor; stays on when it has successfully received RF signal from the remote sensor
- 14) Clock – displays in 24 or 12 hour format
(refer “Time format” in SETUP mode for setting)
- 15) Alarm icon – appears when alarm is enabled
- 16) Moon phase with stars icons – New moon (the moon icon disappears), Waxing Crescent moon, First Quarter Moon, Waxing gibbous moon, Full Moon, Waning gibbous Moon, Last Quarter Moon & Waning Crescent Moon
- 17) Calendar – displays in Day/Month or Month/Day format (Refer SETUP mode for setting)
- 18) Channel number of outdoor remote sensor – channel 1, 2 or 3
(Default channel 1 for wind meter)



Weather & Photo Mode

- 1) Clock – displays in 24 or 12 hour format (refer “Time format” in SETUP mode for setting)
- 2) Alarm icon – appears when alarm is enabled
- 3) Weather forecast – includes sunny, partly cloudy, cloudy, rainy & stormy
- 4) Daily, weekly & monthly rainfall in inch or mm
- 5) Average wind speed and wind direction

- 6) Indoor or outdoor temperature in degree C or F (with trend – rising, steady or falling)
- 7) Indoor or outdoor humidity (with trend – rising, steady or falling)
- 8) RF signal indicator – flashes when it is searching for RF signal from remote sensor; stays on when it has successfully received RF signal from the remote sensor.
- 9) Photo(s) from USB flash drive, SD or MMC memory card.

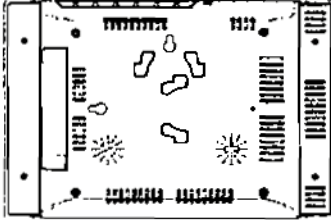


Calendar Mode

- Press LEFT ARROW or RIGHT ARROW button to show the calendar of the previous or next month
- Press the UP ARROW button or DOWN ARROW button to show the calendar of the previous or next year.
- To set the calendar, enter SETUP mode.

Positioning the Wireless display

The Weather station provides the option of table standing or wall mounting the unit, vertically or horizontally. Before wall mounting, please check that the outdoor data can be received from the desired locations.



TO WALL MOUNT:

Fix a screw (not supplied) into the desired wall, leaving the head extended out by about 0.2" (5mm). Place the weather station onto the screw, using the hanging hole on the backside. Gently pull the weather station down to lock the screw into place.

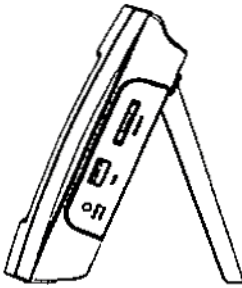


TABLE STAND:

Insert the stand to the back of the wireless display. Place wireless display on desk or table in range of the sensors.

POSITIONING THE WIND/THERMOHYGRO TRANSMITTER:

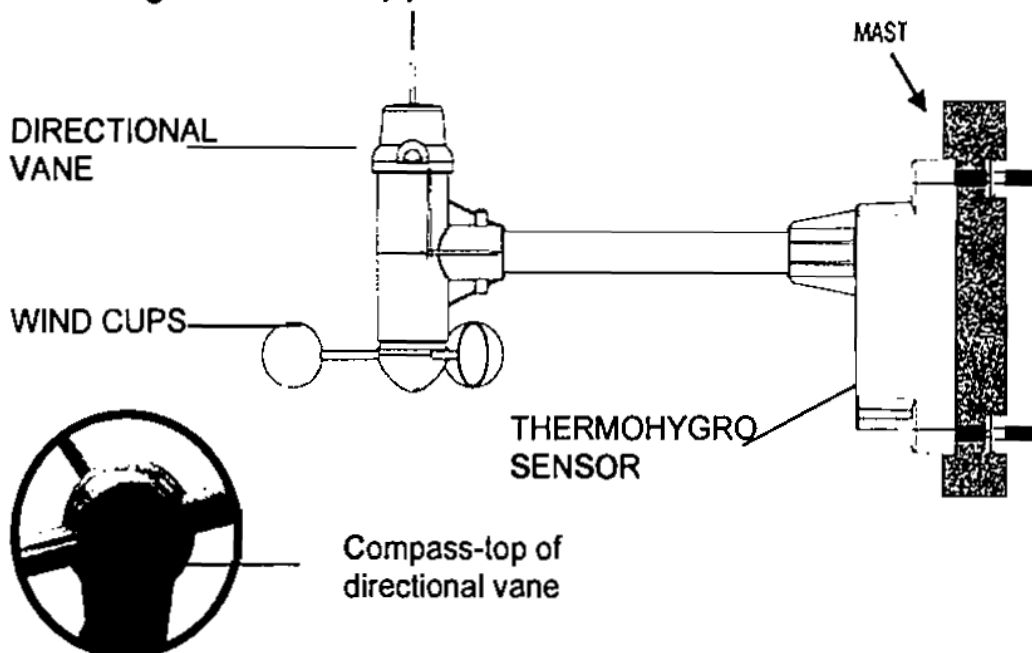
Important: Before mounting, be sure the monitor & anemometer are within the effective transmission range (246 ft open air).

Note: To mount the anemometer, you need a mast (not supplied) about 1 – 1.25 inches (2.54 – 3.1 cm) in diameter, and the hardware necessary to fasten it to the mounting location.

- Mount and ground the mast as directed in the instructions provided by the mast.
- Place the supplied U-shape metal plates around the mast. Insert 4 pieces of the supplied Hex screws through the holes

of the U-shape plates and the holes on the anemometer's mounting bracket.

- Be sure the wind vane is above the wind cup and the metal bar of the anemometer is in horizontal level)
- Tighten the supplied Hex nut onto both ends of each screw



Calibrate the wind direction:

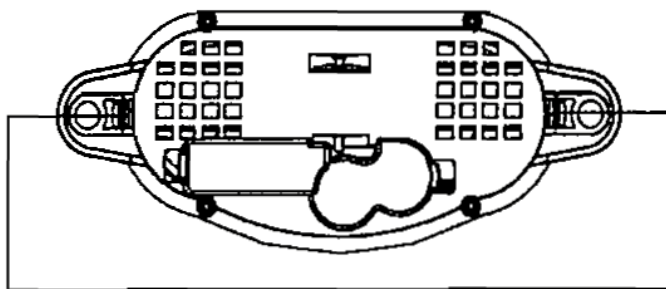
- Hold the directional vane so it points north.
- Install batteries and wait for the red LED light to flash twice.
- Release the directional vane.

Positioning the Rain Gauge:

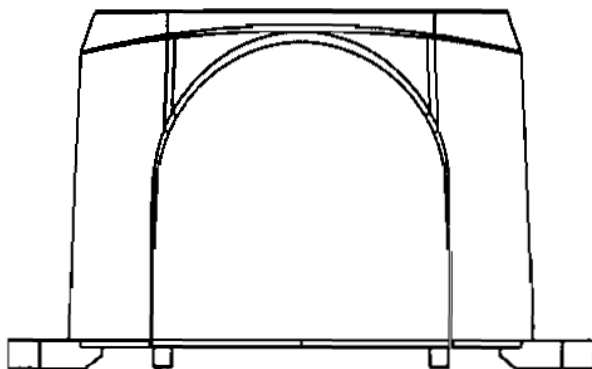
Before mounting the rain gauge, be sure the rain gauge & monitor are within effective transmission range and batteries are installed.

- The rain sensor should be mounted on a level surface in an open area within the **131-foot** wireless range (open air) of the wireless display. Reduce distance by half for every obstruction between the rain gauge and the wireless display.
- Hold the base of the rain gauge flat against the mounting surface then use a level to make sure the rain gauge (as it rests on the mounting surface) is horizontally level.
- Use a pencil to trace the inside of the mounting holes on the base of the rain gauge to mark the screw locations.
- Drill a hole in the center of each marked location and insert the supplied plastic screw plugs
- Hold the rain gauge against the mounting surface so the holes on the base are aligned with the plugs, then thread the supplied washer head screws into each hole and use a screwdriver to gently tighten them. Avoid over tightening as this may cause low rain readings.
- Mount in an area not blocked on the top or sides, so rain can freely reach the rain gauge (for example, not under an overhang or too close to a building or fence).
- To prevent false rainfall readings caused by water splashes, do not choose a location that is not level or that is too close to the ground, a swimming pool, lawn sprinklers, or anywhere water might accumulate or run off.
- Mount the rain sensor at least 6 feet off the ground and level for optimum wireless transmission.

- The rain sensor should be accessible to allow for periodic cleaning of debris or insects.



Press tabs back to unlock Rain Gauge Cover



- Press the tabs back as indicated to unlock the rain gauge cover
- Lift the rain gauge cover off its base. Then carefully remove the packing tape from the bucket assembly
- Open battery cover and insert 2-AA batteries according to the polarity indicated. Close the battery cover.
- Replace & lock the rain gauge cover on the base.

- Total rainfall – All the rain from start up until reset or power down.
- Daily rainfall- Resets daily at midnight.
- Weekly rainfall – Current week. Resets every Saturday night at midnight.
- Monthly rainfall – Current Month. Resets the 1st of each month at 12:00am midnight.

SPECIFICATIONS:

Wireless Display

Memory: Supports USB flash drive (up to 32GB), SD & MMC cards (up to 32GB).

Photo format: Supports Jpeg format

Outdoor data reception

Wind/Temperature/Humidity data around 23 seconds

Rain data around 23 seconds

Indoor temperature

Range: +32 F to +122 F

0 C to + 50 C

(Shows LL when below 0C or 32F; shows HH when above 50C or 122F)

Indoor/OUTDOOR humidity

Range: 20% - 99% RH with 1% resolution

Outdoor temperature

Range: -4 F to +140 F

-20 C to +60 C

(Shows LL when below -20C or -4F; shows HH when above 60C or 140F)

Wind speed/ WIND gust**Range:** 0 – 67 mph

0 – 30m/s

0 – 108 km/h

0 – 58.3 knot

Transmission Distance: 246 feet (75 meters) distance to the wireless display monitor in open space with no obstructions.

NOTE: Gust is the max gust in a 10-minute period. The max gust reading will remain visible for 10 minutes unless a higher gust is reported in that time frame.

Rainfall**Range:** 0 – 393.66 inch

0 – 9999 mm

Transmission Distance: 131 feet (40 meters) to wireless display monitor in open space with no obstructions.

Air pressure**Range:** 23.62 inHg to 32.48 inHg

800 hPa to 1100 hPa

Power Consumption:**Weather Center**

5.0V adapter for wireless display (included)

Rain sensor

2 x AA size batteries IEC LR6, 1.5V (not included)

Wind/Thermohygro sensor

2 x AA size batteries IEC LR6, 1.5V (not included)

IR REMOTE CONTROL

1 x CR2025 (included)

Range: 13 feet (4 meters)

WARRANTY

La Crosse Technology, Ltd provides a 1-year limited warranty on this product against manufacturing defects in materials and workmanship.

This limited warranty begins on the original date of purchase, is valid only on products purchased and used in North America and only to the original purchaser of this product. To receive warranty service, the purchaser must contact La Crosse Technology, Ltd for problem determination and service procedures. Warranty service can only be performed by a La Crosse Technology, Ltd authorized service center. The original dated bill of sale must be presented upon request as proof of purchase to La Crosse Technology, Ltd or La Crosse Technology, Ltd's authorized service center.

La Crosse Technology, Ltd will repair or replace this product, at our option and at no charge as stipulated herein, with new or reconditioned parts or products if found to be defective during the limited warranty period specified above. All replaced parts and products become the property of La Crosse Technology, Ltd and must be returned to La Crosse Technology, Ltd. Replacement parts and products assume the remaining original warranty, or ninety (90) days, whichever is longer. La Crosse Technology, Ltd will pay all expenses for labor and materials for all repairs covered by this warranty. If necessary repairs are not covered by this warranty, or if a product is examined which is not in need or repair, you will be charged for the repairs or examination. The owner must pay any shipping charges incurred in getting your La Crosse Technology, Ltd product to a La Crosse Technology, Ltd authorized service center. La

Crosse Technology, Ltd will pay ground return shipping charges to the owner of the product to a USA address only.

Your La Crosse Technology, Ltd warranty covers all defects in material and workmanship with the following specified exceptions: (1) damage caused by accident, unreasonable use or neglect (including the lack of reasonable and necessary maintenance); (2) damage occurring during shipment (claims must be presented to the carrier); (3) damage to, or deterioration of, any accessory or decorative surface; (4) damage resulting from failure to follow instructions contained in your owner's manual; (5) damage resulting from the performance of repairs or alterations by someone other than an authorized La Crosse Technology, Ltd authorized service center; (6) units used for other than home use (7) applications and uses that this product was not intended or (8) the products inability to receive a signal due to any source of interference. This warranty covers only actual defects within the product itself, and does not cover the cost of installation or removal from a fixed installation, normal set-up or adjustments, claims based on misrepresentation by the seller or performance variations resulting from installation-related circumstances.

LA CROSSE TECHNOLOGY, LTD WILL NOT ASSUME LIABILITY FOR INCIDENTAL, CONSEQUENTIAL, PUNITIVE, OR OTHER SIMILAR DAMAGES ASSOCIATED WITH THE OPERATION OR MALFUNCTION OF THIS PRODUCT. THIS PRODUCT IS NOT TO BE USED FOR MEDICAL PURPOSES OR FOR PUBLIC INFORMATION. THIS PRODUCT IS NOT A TOY. KEEP OUT OF CHILDREN'S REACH.

This warranty gives you specific legal rights. You may also have other rights specific to your State. Some States do not allow the exclusion of consequential or incidental damages therefore the above exclusion of limitation may not apply to you.

For warranty work, technical support, or information contact:

La Crosse Technology, Ltd
2809 Losey Blvd S
La Crosse, WI 54601

The complete instruction manual is available at:
www.lacrossetechnology.com/308-807

Contact Support: 1-608-782-1610

Product Registration:

www.lacrossetechnology.com/support/register.php

All rights reserved. This handbook must not be reproduced in any form, even in excerpts, or duplicated or processed using electronic, mechanical or chemical procedures without written permission of the publisher.

This handbook may contain mistakes and printing errors. The information in this handbook is regularly checked and corrections made in the next issue. We accept no liability for technical mistakes or printing errors, or their consequences. All trademarks and patents are acknowledged.

Printed in China

FCC DISCLAIMER

NOTE: THE MANUFACTURER IS NOT RESPONSIBLE FOR ANY RADIO OR TV INTERFERENCE CAUSED BY UNAUTHORIZED MODIFICATIONS TO THIS EQUIPMENT. SUCH MODIFICATIONS COULD VOID THE USER AUTHORITY TO OPERATE THE EQUIPMENT

This device complies with part 15 of the FCC Rules. Operation is subject to the following two conditions: (1) this device may not cause harmful interference, and (2) this device must accept any interference received, including interference that may cause undesired operation.

NOTE: This equipment has been tested and found to comply with the limits for a Class B digital device, pursuant to Part 15 of the FCC Rules. These limits are designed to provide reasonable protection against harmful interference in a residential installation. This equipment generates, uses and can radiate radio frequency energy and, if not installed and used in accordance with the instructions, may cause harmful interference to radio communications. However, there is no guarantee that interference will not occur in a particular installation. If this equipment does cause harmful interference to radio or television reception, which can be determined by turning the equipment off and on, the user is encouraged to try to correct the interference by one or more of the following measures:

- Reorient or relocate the receiving antenna.
- Increase the separation between the equipment and receiver.
- Connect the equipment into an outlet on a circuit different from that to which the receiver is connected.
- Consult the dealer or an experienced radio/TV technician for help.

89-2W232-134