

MFJ

hamProAudio™ Transmit Audio Conditioner

Model MFJ-651



INSTRUCTION MANUAL

CAUTION: Read All Instructions Before Operating Equipment

MFJ ENTERPRISES, INC.

300 Industrial Park Road
Starkville, MS 39759 USA
Tel: 662-323-5869 Fax: 662-323-6551

DISCLAIMER

Information in this manual is designed for **user purposes only** and is **not** intended to supersede information contained in customer regulations, technical manuals/documents, positional handbooks, or other official publications. The copy of this manual provided to the customer will **not** be updated to reflect current data.

Customers using this manual should report errors or omissions, recommendations for improvements, or other comments to MFJ Enterprises, 300 Industrial Park Road, Starkville, MS 39759. Phone: (662) 323-5869; FAX: (662) 323-6551. Business hours: M-F 8-4:30 CST.

TABLE OF CONTENTS

<u>TOPIC</u>	<u>PAGE</u>
1. TABLE OF CONTENTS	2
2. LIST OF FIGURES AND TABLES	2
3. INTRODUCTION AND FEATURES	3
4. TYPICAL SPECIFICATIONS	4
5. SYSTEM CONTROLS AND INDICATORS	5
a. FRONT PANEL CONTROLS AND INDICATORS	5
b. REAR PANEL CONTROLS AND INDICATORS	7
6. SYSTEM SETUP	8
a. INTERNAL HEADERS	8
b. INTERNAL JUMPER BLOCKS	9
c. CABLES	17
d. POWER	17
e. HEADPHONES	17
f. RADIO AUDIO	17
7. THEORY OF OPERATION	18
8. MFJ-651 EASY-START INSTRUCTIONS	20
9. IN CASE OF DIFFICULTY	24
10. TECHNICAL ASSISTANCE	24

LIST OF FIGURES

Figure 1	Front Panel Jacks and Controls	5
Figure 2	Rear Panel Jacks and Controls	7
Figure 3	Internal Headers	8
Figure 4	Internal Jumper Blocks	9
Figure 5	Mic Jack Pinout	10
Figure 6-11	Internal Jumper Blocks	10
Figure 12	Yaesu Mic Jack Pinout, Front View	14
Figure 13	Functional Diagram	18
Figure 14	Compression and Gating Characteristics	19
Figure 15	Block Diagram	19
Figure 16	Schematic	25

INTRODUCTION & FEATURES

INTRODUCTION

The MFJ-651 *hamProAudio* Transmit audio conditioner was designed with the serious operator in mind. Based on the Broadcast Industry Standard Speech Compression IC the SSM-2166 from Analog Devices, it allows the operator flexibility in the use of input sources and output methods.

FEATURES

Choice of three Input Sources: In order to add versatility MFJ has included the following input sources for the MFJ-651:

1. A standard RJ-45 input jack common to most new radios.
2. Standard 8 pin round chassis connector for the majority of the radios produced in the last 25 years.
3. MFJ's own input consisting of a 3.5 -mm jack that allows the user to choose from feeding audio, audio and a PTT function for use with the Heil series of Boom-Mic Headsets, or even provides phantom voltage on the tip for the MFJ-393 Boom-Mic Headphones or on the ring for use with a computer Boom-Mic or Boom-Mic headset.

These features are included along with allowing you to feed audio from a computer, TNC or Modem.

Fully Adjustable Gain Amplifier: You have control of the output level to bring weak microphones up to a useful level or provide over 1.2 volts peak to peak using the auxiliary output.

Wide Range Compression Settings: With an adjustable compression setting from 1:1 to 15:1 you control the amount of compression necessary to get your signal through the toughest of band conditions.

Adjustable Downward Expansion Level and Delay: No more feeding background noise into your signal. The MFJ-651 allows you to set the level of Downward Expansion to only pass audio when you are talking, and a delay to minimize cutting in and out between words.

INTRODUCTION & FEATURES

Audio Pass Through from your Radio: No need to switch the headphones from the MFJ-651 to the radio. At the push of a button you can instantly switch from normal operation to a test mode that allows you to adjust the settings without going on the air with the built in monitor amplifier.

By-pass Function: Switch the MFJ-651 in or out and you still have the radios audio in the headphones. This feature is useful when you want to Rag Chew and don't need the Compression or Downward Expansion of the MFJ-651.

Multiple Outputs: The MFJ-651 has multiple outputs for both receive/test audio and Microphone audio. No need to have to hunt for an adapter to switch between 3.5 -mm or ¼-inch stereo phone jacks. Microphone audio is fed from the RJ-45 connector through the 3.5 mm Auxiliary Output or through a separate 3.5 mm jack that gives a truly balanced output if you need it.

Rugged Construction: Attractive all-metal cabinet, conservative component selection, space age SMD Circuitry and extensive RF filtering ensure solid performance for years to come. Fully covered by MFJ's "No Matter What" one year limited warranty.

Before attempting to operate your MFJ-651, please read the manual thoroughly. It contains important detail about setting up your unit to obtain the best performance.

TYPICAL SPECIFICATIONS

Input source.....Dynamic or electret microphone low or high Z
Stereo or Monaural radio audio.
Sound card or Modem

OutputHigh or low Z. Adjustable signal level

Bandwidth20 kHz

Total harmonic distortion1% maximum, <0.2% typical.

SYSTEM CONTROLS

MFJ-651 JACKS AND CONTROLS

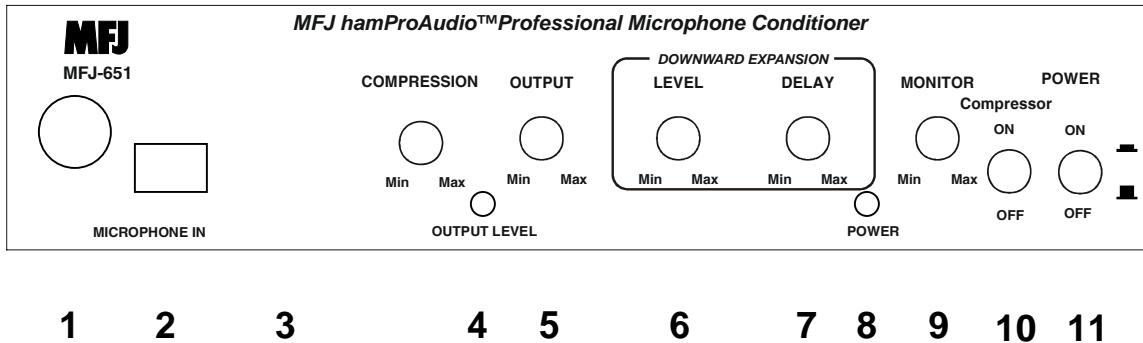


Figure 1: MFJ-651 Front Panel Jacks and Controls

1. **8 pin Microphone Input Jack:** Accepts input from any standard 8 pin microphone.
2. **RJ-45 Microphone Input Jack:** Accepts the input from a standard RJ-45 Microphone.
3. **Compression Level Set:** Controls the Compression function from no Compression to 15:1 maximum Compression.
4. **Output Gain Level LED:** A one time adjustment will allow this LED to monitor your output level and allow you to set the gain level for any input source easily.
5. **Output Level Gain:** Allows a wide range of output levels for various radios or other uses.
6. **Downward Expansion Level Set:** Allows adjustment of the required audio level to allow the unit to pass audio. Great for noisy conditions.
7. **Downward Expansion Delay Set:** Sets the amount of time that the internal amplifier will remain open with no audio. Great to hold the audio open between syllables and words.
8. **Power On LED:** Instant visual identification if you are using the MFJ-651 or just the standard microphone.
9. **Monitor Gain:** Control the audio level in the headphones when in the test position.
10. **Compressor ON & OFF:** Allows you to use your microphone through the MFJ-651's built in preamp.
11. **Power ON & OFF:** Allows you to either use your Microphone direct or through the MFJ-651.

SYSTEM CONTROLS

REAR PANEL

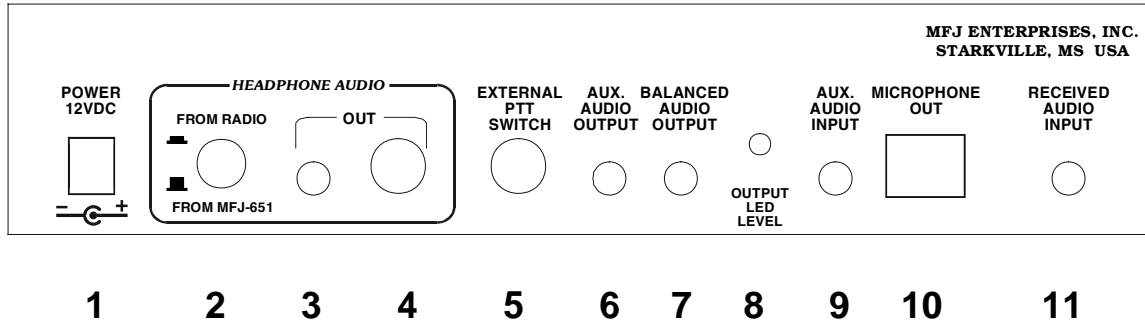


Figure 2: MFJ-651 Rear Panel Jacks and Controls

1. **Power:** Accepts 2.1 –mm power plug to supply 12-15 Vdc to the unit.
2. **From Radio/From MFJ-651:** This switch allows the audio to be fed from the radio to the headphones or in the test mode for the audio from the microphone to be fed to the headphones for setting up the MFJ-651. Additionally, in the test mode the PTT is disabled allowing you to key the microphone without keying the radio.
3. **Headphones Out:** Allows you to use a pair of 3.5 –mm stereo headphones. The mono test audio is fed into both sides of the phones. The radio audio is what your radio puts out. Handy if you have a Main and a Sub-receiver.
4. **Headphones Out:** Same function as number 3 but for ¼ inch stereo headphones.
5. **External PTT Input:** This ¼ inch jack allows PTT from a Hand Switch or Foot Switch.
6. **Auxiliary Output:** This 3.5 –mm jack allows direct audio to be fed from the unit. Useful when high levels of audio are required, as up to 1.2 volts peak to peak are available.
7. **Balanced Output:** This 3.5 –mm stereo jack give a balanced output.
8. **Output LED Level Set:** This trim pot is used to adjust the point at which the LED illuminates.
9. **Auxiliary Input:** This multifunction input allows just about anything to be used with the MFJ-651 by setting the appropriate input jumpers.
10. **RJ-45 Output:** This is where the MFJ-5398 or the MFJ-5397MX radio interface cable is attached.
11. **Received Audio Input:** This jack allows either stereo or mono (if wired properly) audio input from your radio

Bottom of MFJ-654 (not shown)

1. **Bypass Gain Control:** Sets the gain of the internal MFJ-654 bypass gain amplifier to be equal to the mic level when the MFJ-654 is turned off.

SYSTEM SETUP

Internal Headers Main Board View

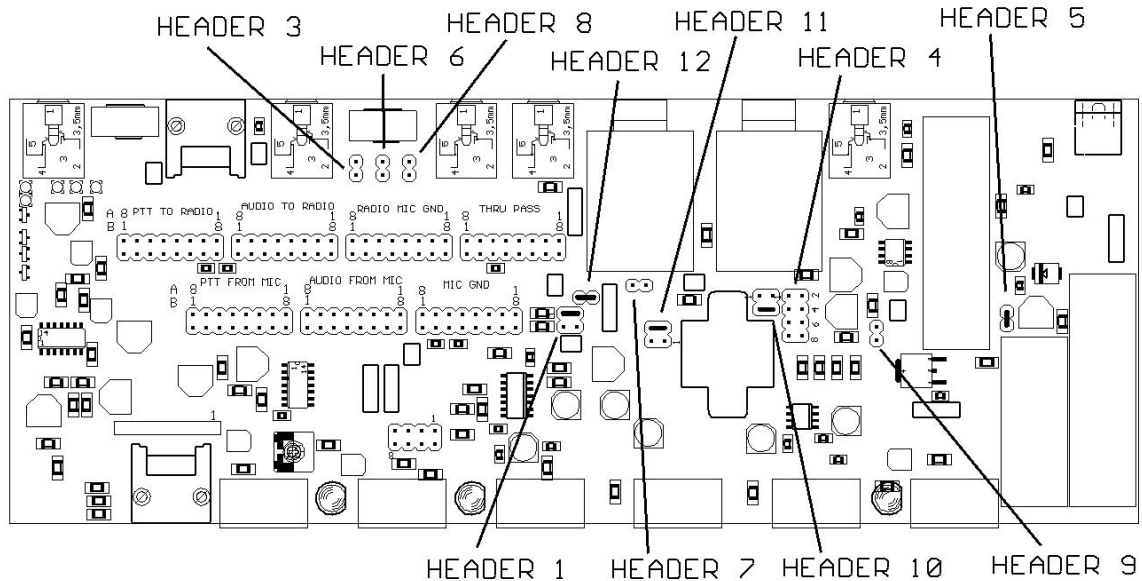


Figure 3: Internal Headers

1. **Header 1:** This sets the input impedance of the unit to your specific microphone. Default 1-2 is set to 680 ohms, the standard impedance setting for most stock microphones. If you need low impedance, move the jumper to position 3-4. Remove the strap for high impedance microphones.
2. **Header 3:** This allows the PTT line to be placed on the ring of the 3.5 –mm auxiliary input jack. Default is off.
3. **Header 4:** This header allows phantom voltage to be fed to electret microphones. Default is 0 volts pins 1-2 shorted. Move this jumper to pins 3-4 for 1.5 volts, 5-6 for 5 volts or 7-8 for 8 volts.
4. **Header 5:** High impedance output. Default is shorted for low impedance output. Remove this jumper for approximately 50K output impedance.
5. **Header 6:** This header allows the phantom voltage set by header 4 to be passed to the ring of the Auxiliary input jack. Default is off. If used with standard computer microphone/headphones, set to 5 volts.
6. **Header 7:** This header ties the CT of the output transformer allowing a balance output to be available at the 3.5 –mm jack. Default is off.
7. **Header 8:** This header allows the PTT line to be placed on the Auxiliary Output ring terminal of the 3.5 –mm jack. Default is off.
8. **Header 9:** This Header places phantom voltage on the microphone input line and the tip of the 3.5 mm input jack. It must be shorted when using a microphone requiring phantom voltage.
9. **Header 10:** This header allows the transformer to be bypassed to increase the low frequency response. Default is 3-4 bypassed.
10. **Header 11:** This header allows the transformer to be bypassed to increase the low frequency response. Default is 3-4 bypassed.
11. **Header 12:** This header grounds the Mic Ground to the radio and must be shorted if the transformer is being bypassed. Default is on.

SYSTEM SETUP

Internal Jumper Blocks Main Board View

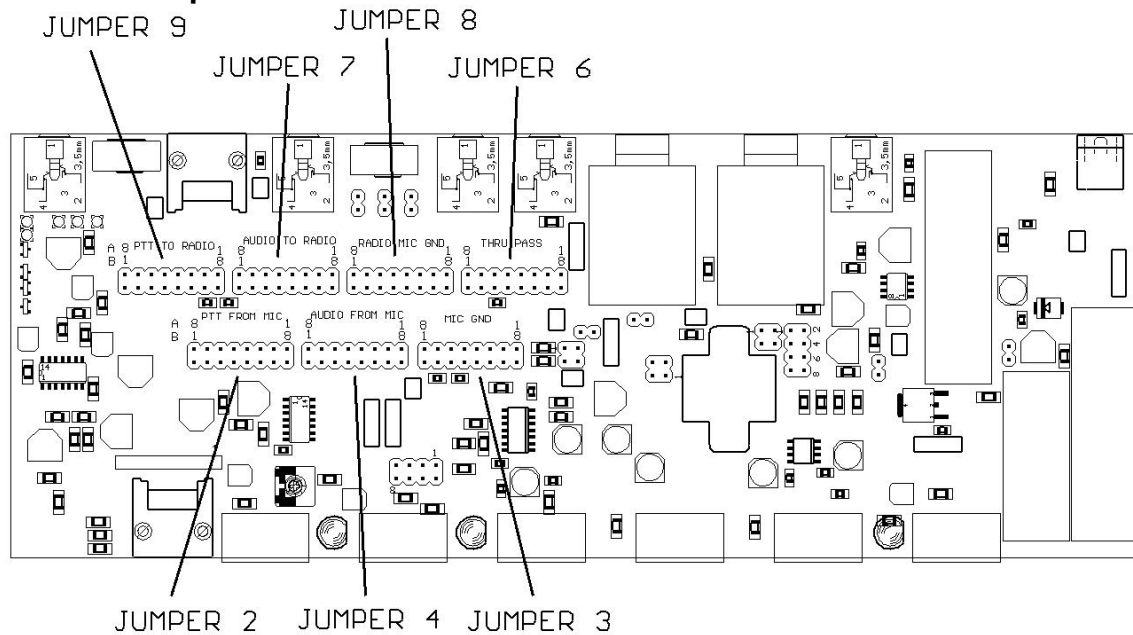


Figure 4: Internal Jumper Blocks

The default jumper settings from the factory are set for ICOM 8-Pin Round Microphone. (SEE FIGURE 6)

Refer to Table 1 for common microphones. Consult your owner's manual to determine your specific microphone pinout.

1. **Jumper 2:** PTT from the Microphone. Place a jumper on the pin number that corresponds to the pin of your microphone that supplies the PTT line to the radio.
2. **Jumper 3:** Microphone Audio Ground. Place a jumper on the pin number that corresponds to the pin that supplies the shielded ground from the microphone.
3. **Jumper 4:** Microphone Audio Input. Place a jumper on the pin number that corresponds to the pin that supplies microphone audio.
4. **Jumper 6:** Pass/Thru. This allows you to pas any other lines from the microphone for feature such as up/down/fast. Normally all lines that are not being used for the Mic Audio, Mic Ground and PTT line will be jumpered.
5. **Jumper 7:** Microphone Audio to Radio. Place a jumper on the pin that corresponds to the pin on your radio that feeds microphone audio to the radio.
6. **Jumper 8:** Microphone Audio Ground to Radio. Place a jumper on the pin that corresponds to the pin that your radio requires for the shielded ground.
7. **Jumper 9:** PTT to Radio. Place a jumper on the pin corresponding to the pin that your radio requires for PTT

SYSTEM SETUP

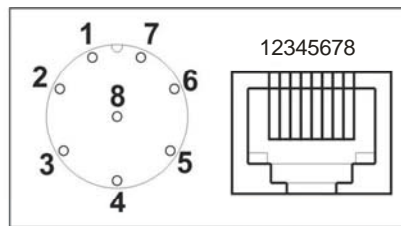


Figure 5: Front panel view of Mic Jacks.

Refer to this drawing for the numbering of the headers from 1 to 8. The RJ-45 is numbered with the clip down. Note the position of the key for the 8 pin round connector this position may be different on your particular unit. The round connector follows the B row of jumper numbering. Also note the view of the RJ-45 jack. The RJ-45 connector follows the A row of Jumper numbering. However, because some manufacturers may number their connectors different from that shown, you can use either the A or B row numbering as appropriate. Just to be sure, map the actual pin function – not the pin number – of your radio's mic connector to the numbered pins shown above so as to determine the correct jumper positions to use in the MFJ-651.

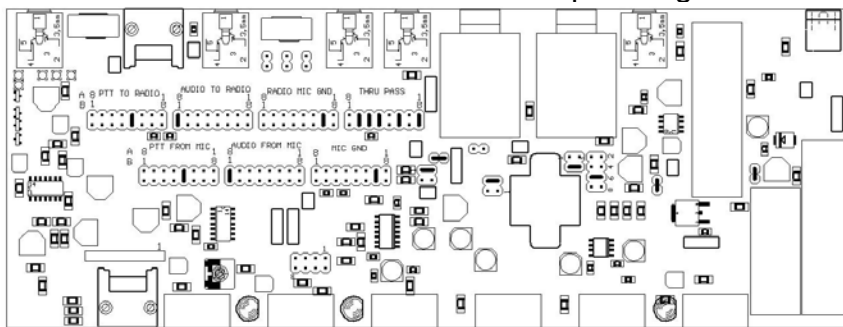
INTERNAL JUMPER BLOCKS

The Jumper Installation diagrams within this instruction manual will help you in setting up your MFJ-651 to match your radio. If your radio is not listed with the diagram, it means that we have not verified your radio to use that diagram. **To be absolutely safe, please refer to your RADIO INSTRUCTION MANUAL to verify your microphone wiring.** You can damage your radio if you accidentally short the microphone voltage (available on many microphone connectors) to ground. Once you have identified the MIC pin assignment for your radio, then follow the instructions given at the end of this section to install the jumpers.

ICOM 8-Pin Round Microphone Setup (DEFAULT SETUP):

IC-255, 288, 28, 290, 38A, 375, 707, 718, 725, 726, 728, 729, 730, 735, 737, 745, 746, 746PRO, 751, IC-756, 756PRO, 756PROII, 775DSP, 761, 78, 781, 910H

Follow the Numbers beside B in the Jumper Diagram



This diagram may cover some other radios in the ICOM product line with 8-pin round microphone jack. If there are any Questions concerning the information provided, please refer to your **RADIO INSTRUCTION MANUAL**. MFJ is neither liable nor responsible for any mistakes or errors in the information provided. Receive Audio is taken from the Headphone Audio Output.

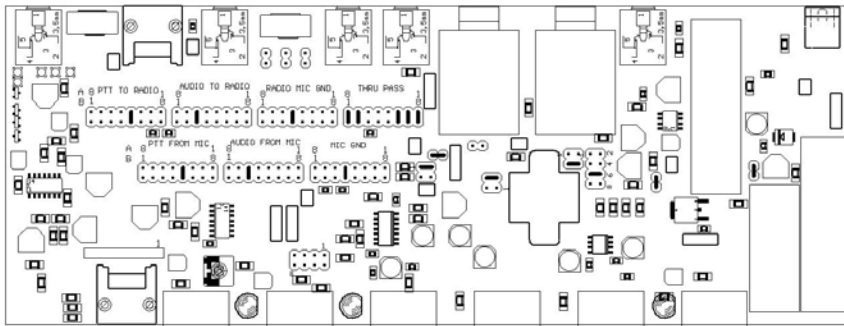
Figure 6: ICOM 8-Pin Round Microphone Setup (DEFAULT SETUP)

SYSTEM SETUP

**ICOM 8-Pin Modular Microphone Setup:
IC-207H, 2720H, 2800H, 703, 706, 706MKII, 706MKIIG, V8000**

NOTE: ICOM ELECTRET MICs REQUIRE THAT YOU STRAP HDR4 TO 7-8 AND PLACE A JUMPER ON HDR9

Follow the Numbers beside A in the Jumper Diagram



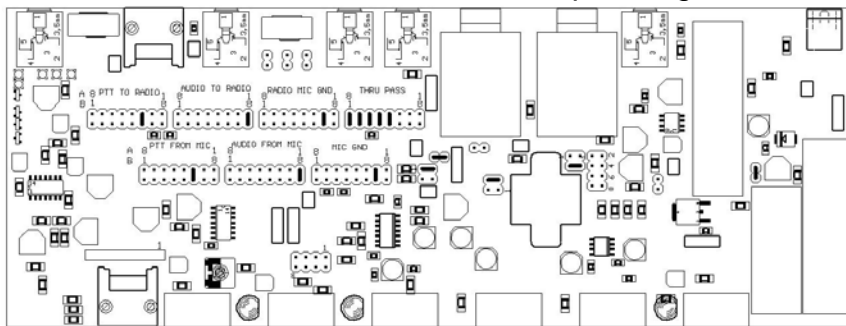
This diagram may cover some other radios in the ICOM product line with 8-pin modular microphone jack. If there are any Questions concerning the information provided, please refer to your RADIO INSTRUCTION MANUAL. MFJ is neither liable nor responsible for any mistakes or errors in the information provided. Receive Audio is taken from the Headphone Audio Output.

Figure 7: ICOM 8-Pin Modular Microphone Setup

YAESU 8-Pin Round Microphone Setup:

YAESU FT-650, 707, 712, 726, 736, 756, 767, 77, 790II, 700, 840, 890, 990, 1000D

Follow the Numbers beside B in the Jumper Diagram

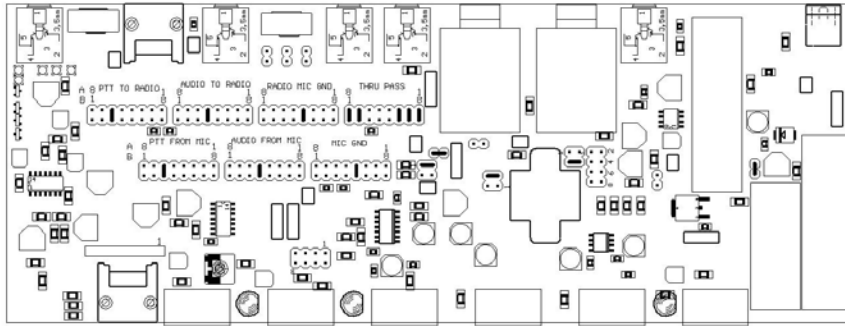


This diagram may cover some other radios in the YAESU product line with 8-pin round microphone jack. If there are any Questions concerning the information provided, please refer to your RADIO INSTRUCTION MANUAL. MFJ is neither liable nor responsible for any mistakes or errors in the information provided. Receive Audio is taken from the Headphone Audio Output.

Figure 8: YAESU 8-Pin Round Microphone Setup

SYSTEM SETUP

**YAESU 8-Pin Modular Microphone Setup:
YAESU FT-817, 857, 897**



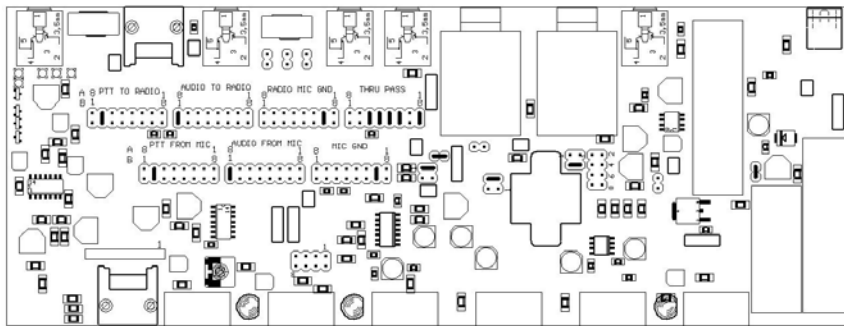
This diagram may cover some other radios in the YAESU product line with 8-pin modular microphone jack. If there are any Questions concerning the information provided, please refer to your RADIO INSTRUCTION MANUAL. MFJ is neither liable nor responsible for any mistakes or errors in the information provided. Receive Audio is taken from the Headphone Audio Output.

Figure 9: YAESU 8-Pin Modular Microphone Setup

KENWOOD 8-Pin Round Microphone Setup:

TS-50, 60, 140, 430, 440, 450, 570, 660, 670, 680, 690, 711, 780, 811, 850, 870, 930, 940, 950
 TM-201A, 201B, 211, 221, 231, 241, 321, 331, 401A, 401B, 421, 431, 441, 521, 531, 541, 621
 TM-631, 701, 721, 731, 2530, 2550, 2570, TR-50, 751, 851, TW-4000, 4100

Follow the Numbers beside B in the Jumper Diagram



This diagram may cover some other radios in the Kenwood product line with 8-pin round microphone jack. If there are any Questions concerning the information provided, please refer to your RADIO INSTRUCTION MANUAL. MFJ is neither liable nor responsible for any mistakes or errors in the information provided. Receive Audio is taken from the Headphone Audio Output .

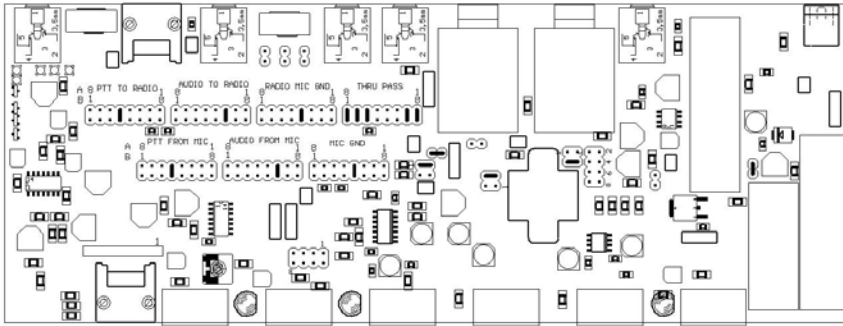
Figure 10: KENWOOD 8-Pin Round Microphone Setup

SYSTEM SETUP

KENWOOD 8-Pin Modular Microphone Setup:

TM-251, 255, 261, 451, 461, 641, 642, 732, 733, 741, 742, 941, 942, G707, V7A

Follow the Numbers beside A in the Jumper Diagram



This diagram may cover some other radios in the Kenwood product line with 8-pin modular microphone jack.

If there are any Questions concerning the information provided, please refer to your RADIO INSTRUCTION MANUAL.

MFJ is neither liable nor responsible for any mistakes or errors in the information provided.

Receive Audio is taken from the Headphone Audio Output .

Figure 11: KENWOOD 8-Pin Modular Microphone Setup

SYSTEM SETUP

CUSTOMIZING INTERNAL JUMPERS

If your radio is not listed, you can create a custom jumper position table.

Begin by removing the screws from the sides of the cabinet. Lift the cover off. Look from the front view and notice the group of pins and black jumpers on the left side behind the microphone connector and in front of the microphone output jack.

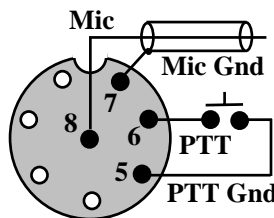
Fill in a custom table like the following:

Pin	JP8 rad mic gnd	Jp3 mic gnd	JP5 pass	JP4 mic audio	JP7 rad ptt	JP2 mic ptt	JP9 rad audio
1			X				
2			X				
2			X				
4			X				
5			X				
6					X	X	
7	X	X	X				
8				X			X

Table 1: Sample Jumper Settings Table for Yaesu FT-1000 Series

UNLISTED RADIOS

To make a jumper table for an unlisted radio, you must look at the radio manual. Find the page that shows the microphone wiring. This is a sample of a Yaesu-style wiring diagram that was used above:



Yaesu Mic Jack Pin-out, Front View

Figure 12: Yaesu Mic Jack

If you compare table 1 to this connector diagram, you will see how it is laid out. Notice an “X” was placed at the appropriate PTT and MIC pins according to the rules below.

Look at the microphone-wiring diagram in your radio manual, fill in a table, and connect the leads as we have done in our example. We have provided a blank chart below for you to fill in.

SYSTEM SETUP

- 1.) Jumpers 4 (audio from mic) and 9 (audio to radio) should have the same strapping.
- 2.) Jumpers 2 (PTT from mic) and 7 (PTT to radio) should have the same strapping.
- 3.) Jumpers 3 (mic gnd) and 8 (mic ground) should have the same strapping.
- 4.) On Jumper 5, be sure to place a pass-through connection jumper on every lead **NOT USED** by straps on Jumpers 2, 4, 7, and 9.

The following blank table is for your personal use. Use your radio's manual to complete the table. This will assist you in properly setting the jumpers for your radio.

Pin	JP8 rad mic gnd	JP3 mic gnd	JP5 pass	JP4 mic audio	JP7 rad ptt	JP2 mic ptt	JP9 rad audio
1							
2							
3							
4							
5							
6							
7							
8							

Bypassing the Output Transformer: The output transformer is primarily used for providing a balanced output if desired, and to solve ground loop problems in extreme situations. However, all transformers roll off the lower frequencies, particularly below 200HZ. While this is desirable for DX situations, the MFJ-651 internal equalizer can adjust the audio response as necessary for all operating conditions. Therefore, the transformer is normally bypassed.

SYSTEM SETUP

Radio	Pin 1	Pin 2	Pin 3	Pin 4	Pin 5	Pin 6	Pin 7	Pin 8
Alinco	MIC AUDIO	PTT	DOWN	UP	5 VOLTS	AF OUT	MIC GND	GND
Icom	MIC AUDIO	+8 VOLTS	UP/DOWN	SQL	PTT	PTT GND	MIC GND	
Kenwood	MIC AUDIO	PTT	DOWN	UP	8 VOLTS	NC	MIC GND	PTT GND
Yaesu FT1000	UP	GND	DOWN	FAST	GND	PTT	MIC GND	MIC AUDIO
Yaesu FT-990 FT-1000MP	UP	+5 VOLTS	DOWN	FAST	GND	PTT	MIC GND	MIC AUDIO

Table 2: Common Microphone Pinouts

SYSTEM SETUP

CABLES

Simply connect your microphone to the appropriate input and use either a MFJ-5398 for 8 pin Round or MFJ-5397MX for 8 pin Modular connector to the output on the rear of the unit and attach to your radio.

Connect audio from you radio's headphone jack to the 3.5-mm jack on the MFJ-651. If your radio output is mono then simply wire the tip and the ring of the cable to provide audio to both sides of the headphones.

Connect a Foot Switch or Hand Switch to the PTT jack located on the rear of the unit if desired. You can also use the PTT switch in the microphone connected to the MFJ-651.

POWER

The MFJ-651 will operate with any well-filtered 10-14 VDC power supply capable of at least 150 mA. The required power connector is a 2.1 -mm ID, 5.5 mm OD coaxial power plug.

As this is a quality audio unit, use of an unregulated wall power supply transformer is not recommended as the unloaded voltages can easily exceed 15 volts and the lack of filtering and regulation can introduce hum and other noise onto your signal.

Wire (+) voltage to center and (-) to common.

HEADPHONES

Use stereo headphones rated at 8-40 Ohms impedance. Jacks for either ¼ inch or 3.5 -mm headphones are included on the rear of the unit. Use of quality phones will aid in the reproduction of the audio when setting up the unit.

RADIO AUDIO

Use a 3.5 mm stereo plug to attach the radio audio to the MFJ-651. The MFJ-651 will pass stereo audio from your radio to both sides of the headphones if you radio is capable of this. If your radio only passes mono then you will have to wire a cable that ties the tip and ring of the 3.5 mm jack that goes to the MFJ-651 to have audio in both sides of the headphones.

THEORY OF OPERATION

The SSM2166 is a complete microphone signal condition system on a single IC. It provides amplification, RMS detection, limiting, variable Compression and Downward Expansion.

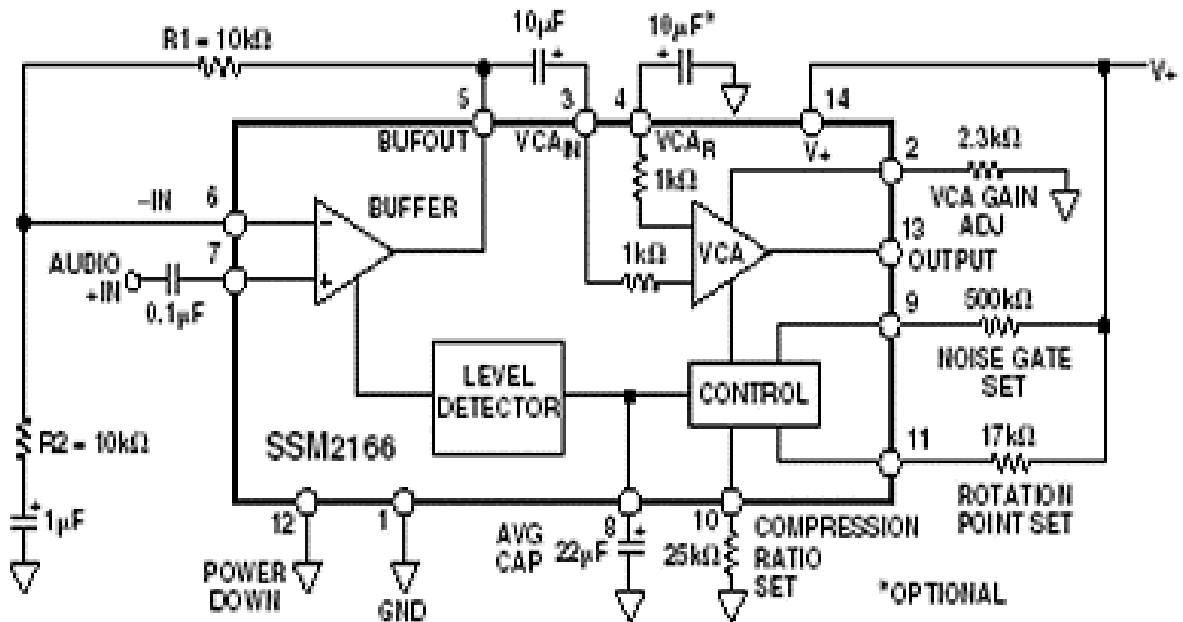


Figure 13: Functional Diagram

Figure 13 shows the functional diagram of the SSM2166. Input signals below V_{de} set by The Downward Expansion control on the front panel are downward expanded, that is a -1dB change in the input signal level causes a -3dB change in the output level. The average time for this feature is set by the Delay control on the front panel. Overall gain of the MFJ-651 is set by controlling the Vca through the front panel control. Gains of up to 20 dB are available. Compression is set by the front panel control and ratios of 1:1 up to 15:1 are possible.

THEORY OF OPERATION

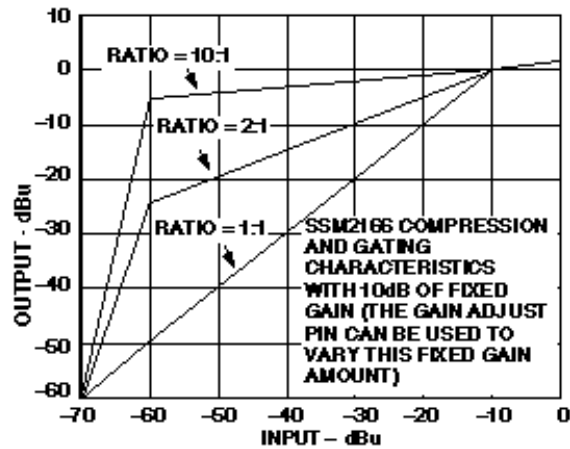


Figure 14: Compression and Gating Characteristics

Figure 14 shows how the input levels are compressed for various levels of compression within the SSM2166. Compression is a method of signal processing that the loudest signals are made softer and the quietest signal are boosted this reduces the overall dynamics of the signal but this also makes the output appear louder to the ear.

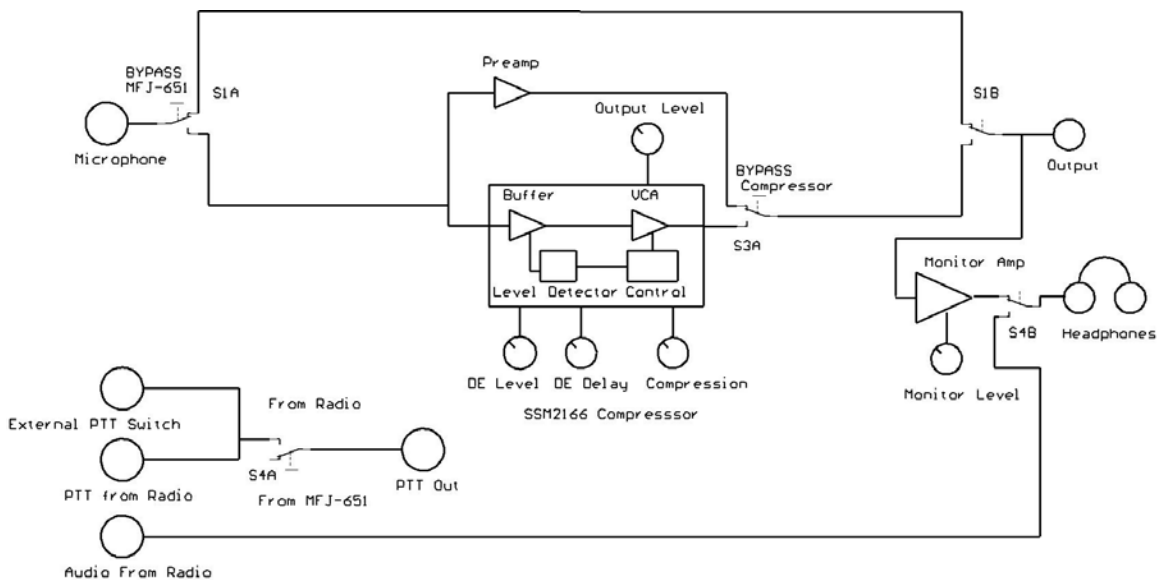


Figure 15: Block Diagram

Figure 15 shows the complete block diagram of the MFJ-651 hamProAudio™ Transmit audio conditioner.

EASY-START INSTRUCTIONS

Note: The MFJ-651 is completely bypassed when the MFJ-651 POWER switch is **OFF**, and your mic is fed directly to your transceiver.

1. Start with the MFJ-651 off. Using your microphone set your radio's mic gain, ALC and any other features to their proper operating conditions. Now, set the MFJ-651 front panel controls as follows:

Compression level:	9 o'clock
Output Gain:	Fully counterclockwise
EQL Gain:	Fully counterclockwise
Downward Expansion LVL:	Fully clockwise
Delay:	Fully clockwise
Monitor gain:	Fully counterclockwise
COMP Switch:	OFF (Bypassed)

2. Set the **FROM RADIO/FROM MFJ-651** switch on the rear of the unit to **FROM MFJ-651**.
3. Turn on the MFJ-651 and speak into the microphone. Adjust the **MONITOR** gain to a comfortable level.
4. Place the **FROM RADIO/FROM MFJ-651** switch in the **FROM RADIO** position.
5. Connect a Dummy Load to your radio.
6. While speaking into the microphone, adjust the Bypass Gain control until the readings on your radio's meter are the same as with the MFJ-651 turned off.
7. Turn on the Compressor. While speaking into the microphone, slowly increase the **OUTPUT** level control until the readings on your radio's meter are the same as with the Compressor bypassed..

EASY-START INSTRUCTIONS

8. Once these levels have been set, place the COMPRESSOR, **ON** (in-line) as desired. While speaking into the microphone, adjust the **OUTPUT LEVEL LED** control on the rear of the MFJ-651 until the Output Level LED on the front panel just illuminates on voice peaks.
9. This allows you to have a handy reference for setting the Output Level Control under various settings of Compression.
10. While in the **FROM MFJ-651** position you can also set the Downward Expansion Level Control. Fully rotate the Level Control counter clockwise. While speaking into the microphone, rotate the Level Control until the desired effect of the Downward Expansion is obtained. It should be set so that your voice is passed through the unit but background noise is not. Some experimentation is necessary until you are comfortable with the use of Downward Expansion.
11. While speaking into the Microphone, slowly rotate the Delay Control counter clockwise until you have set the delay so the unit does not cut out between words and syllables.
12. Place the unit in the FROM RADIO Position and set your radio's audio so it is at a comfortable level in the headphone.

It will take some time and experimentation to get familiar with the amount of Compression needed, as there is always a trade off between fidelity and the use of Compression to get that rare DX station you are pursuing.

TECHNICAL ASSISTANCE

IN CASE OF DIFFICULTY

- [] **Won't Power up:** Check the polarity and connection to your power supply.

- [] **No microphone audio:** Check the Mic Audio Jumper blocks (Jumpers 4 and 9) and the Mic Ground Jumper blocks (Jumpers 3 and 8) for proper placement of the jumpers. If using an electret microphone, ensure the proper phantom voltage is programmed using the proper jumper.

- [] **No receiver audio:** Check the cabling from your radio to the MFJ-651. Ensure the **FROM RADIO/FROM MFJ-651** switch on the rear of the unit is in the **FROM RADIO** position.

- [] **Station PTT will not function:** Check the PTT jumper blocks (Jumpers 3 and 7) . Ensure that you have a ground between the radio and the MFJ-651 as the Mic Ground is isolated from the Chassis Ground.

- [] **Noisy audio, Hum:** Magnetically induced hum can be caused to any modern piece of audio equipment by proximity to unshielded power transformers or equipment that radiated strong AC fields. Another source of hum can be caused by a ground loop. This is when equipment is connected together but their grounds are not well connected. The use of "Daisy Chain" grounding techniques can contribute to this problem. A single point ground is always recommended in Amateur Radio installations. RF-in-the-shack can also contribute to distortion. To determine if you have this problem, simply transmit into a Dummy Load. If the distortion goes away then you have RF-in-the-shack.

TECHNICAL ASSISTANCE

If you have any problem with this unit first check the appropriate section of this manual. If the manual does not reference your problem or reading the manual does not solve your problem, you may call *MFJ Technical Service* at **662-323-0549** or the *MFJ Factory* at **662-323-5869**. You will be best helped if you have your unit, manual and all information on your station handy so you can answer any questions the technicians may ask.

You can also send questions by mail to MFJ Enterprises, Inc., 300 Industrial Park Road, Starkville, MS 39759; by Facsimile (FAX) to 662-323-6551; or by email to techinfo@mfjenterprises.com. Send a complete description of your problem, an explanation of exactly how you are using your unit, and a complete description of your station.

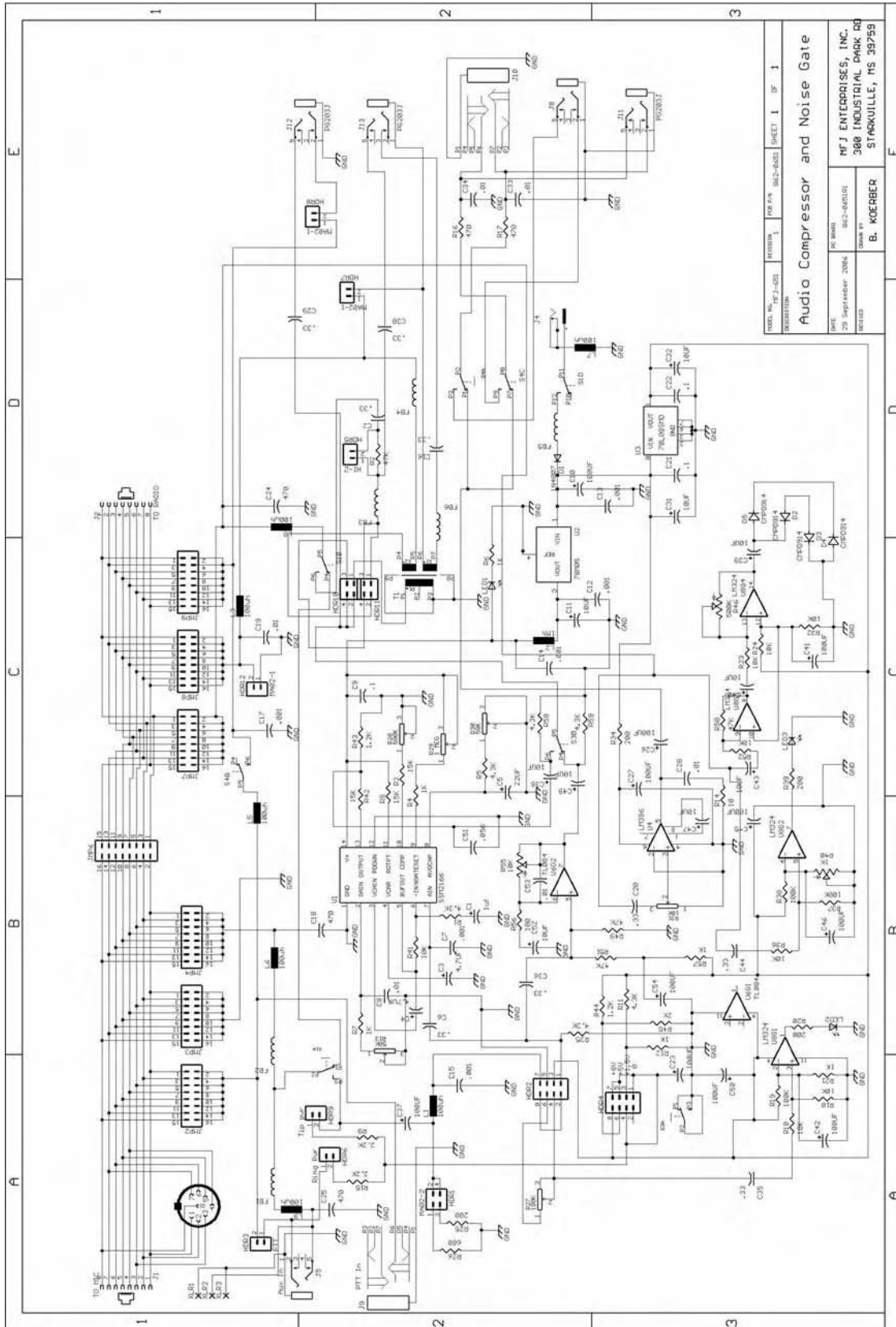


Figure 16: Schematic Diagram

FULL 12-MONTH WARRANTY

MFJ Enterprises, Inc. warrants to the original owner of this product, if manufactured by MFJ Enterprises, Inc. and purchased from an authorized dealer or directly from MFJ Enterprises, Inc. to be free from defects in material and workmanship for a period of 12 months from date of purchase provided the following terms of this warranty are satisfied.

1. The purchaser must retain the dated proof-of-purchase (bill of sale, canceled check, credit card or money order receipt, etc.) describing the product to establish the validity of the warranty claim and submit the original or machine reproduction of such proof of purchase to MFJ Enterprises, Inc. at the time of warranty service. MFJ Enterprises, Inc. shall have the discretion to deny warranty without dated proof-of-purchase. Any evidence of alteration, erasure, of forgery shall be cause to void any and all warranty terms immediately.
2. MFJ Enterprises, Inc. agrees to repair or replace at MFJ's option without charge to the original owner any defective product provided the product is returned postage prepaid to MFJ Enterprises, Inc. with a personal check, cashiers check, or money order for **\$10.00** covering postage and handling.
3. MFJ Enterprises, Inc. will supply replacement parts free of charge for any MFJ product under warranty upon request. A dated proof of purchase and a **\$8.00** personal check, cashiers check, or money order must be provided to cover postage and handling.
4. This warranty is **NOT** void for owners who attempt to repair defective units. Technical consultation is available by calling (662) 323-5869.
5. This warranty does not apply to kits sold by or manufactured by MFJ Enterprises, Inc.
6. Wired and tested PC board products are covered by this warranty provided **only the wired and tested PC board product is returned**. Wired and tested PC boards installed in the owner's cabinet or connected to switches, jacks, or cables, etc. sent to MFJ Enterprises, Inc. will be returned at the owner's expense unrepaired.
7. Under no circumstances is MFJ Enterprises, Inc. liable for consequential damages to person or property by the use of any MFJ products.
8. **Out-of-Warranty Service:** MFJ Enterprises, Inc. will repair any out-of-warranty product provided the unit is shipped prepaid. All repaired units will be shipped COD to the owner. Repair charges will be added to the COD fee unless other arrangements are made.
9. This warranty is given in lieu of any other warranty expressed or implied.
10. MFJ Enterprises, Inc. reserves the right to make changes or improvements in design or manufacture without incurring any obligation to install such changes upon any of the products previously manufactured.
11. All MFJ products to be serviced in-warranty or out-of-warranty should be addressed to **MFJ Enterprises, Inc., 300 Industrial Park Rd, Starkville, Mississippi 39759, USA** and must be accompanied by a letter describing the problem in detail along with a copy of your dated proof-of-purchase and a telephone number.
12. This warranty gives you specific rights, and you may also have other rights, which vary from state to state.

NOTES:

NOTES:

NOTES:



MFJ ENTERPRISES, INC.
300 Industrial Park Road
Starkville, MS 39759 USA

MFJ-651 Manual
Version 0A
Printed In U.S.A. 12/2006