



Radioddity

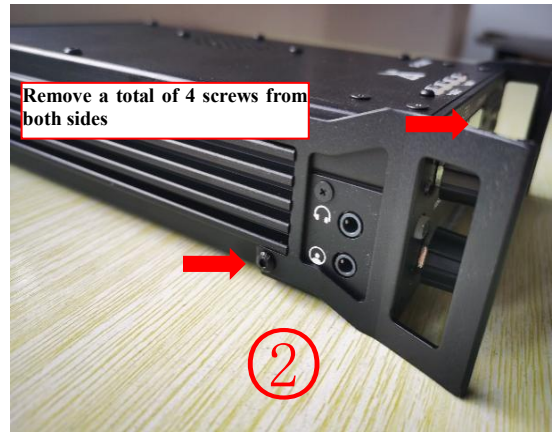
## Radioddity G90-H2 Supporting Leg and Handle Installation Instructions

What's in the box:

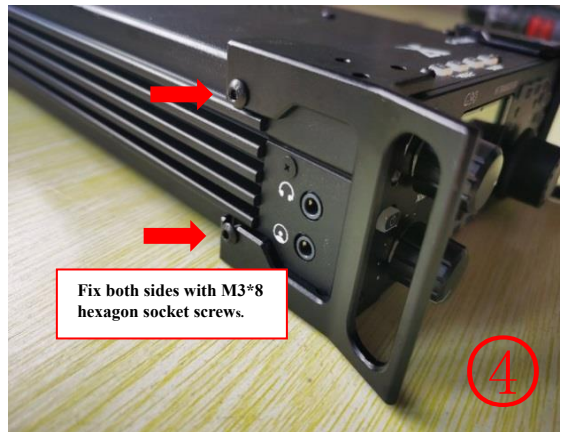
Milling handle: 1 pair	U-shaped support rod: 1	M3*5 hexagon socket screws: 2
Plastic supporting leg: 1 pair	M3*8 hexagon socket screws: 4	L Type Screwdriver: 1

### Installation Guide:

Take off the handle and remove a total of 4 hexagon socket screws from both sides.



Fasten the new handle to the position of the original handle and tighten it with M3\*8 hexagon socket screws to the position of the original screw.





Radioddity

Turn the G90 upside down and place the bottom side up. Take a plastic support leg buckle to the left installation position and fasten it with M3\*5 screws.



Clamp one side of the U-shaped support rod into the left supporting leg. Then, snap the U-shaped support rod into the right supporting leg and tighten the right leg screw.





At this point, the G90-H2 installation is complete!



Note:

- 1、 Do not mix the two types of hexagon socket screws. Use M3\*8 screws to install the handle and M3\*5 screws to install the supporting legs.
- 2、 Do not install both supporting legs at the same time before attaching the U-shaped support frame. It is not easy to snap into place but may easily damage the supporting legs.
- 3、 It would be good enough when all screws are just tightened, do not continue to tighten the screws or it may damage the accessories and the screws.
- 4、 Keep the removed original handles and screws for future use.