

# Uniden® Marine Radio Flush Mount Bracket Instructions

## Use a template...

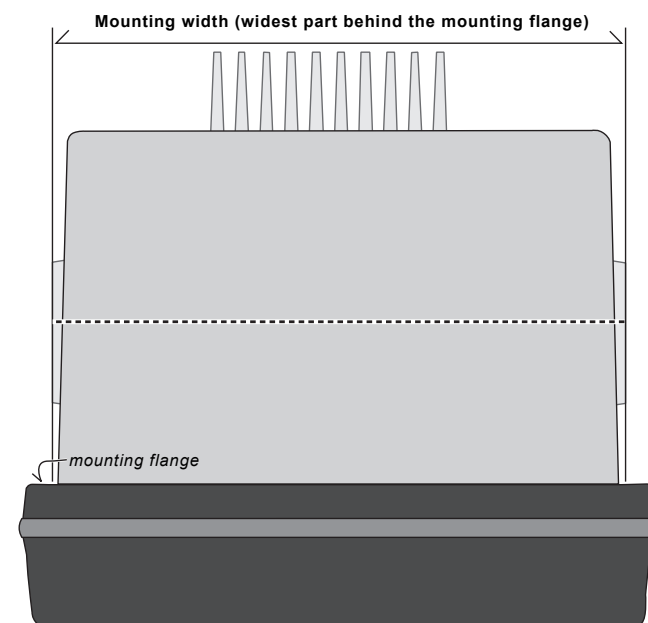
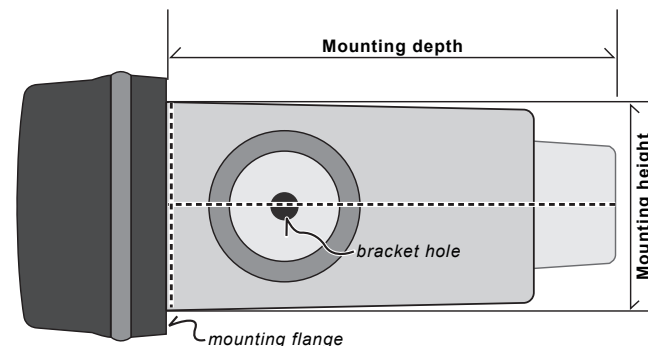
Use the table below to find the correct template and bracket for your radio. If you don't see your radio listed or don't know the model number, you can measure the radio for yourself.

RADIO MODEL	USE TEMPLATE	BRACKET PART #	MOUNTING HEIGHT IN	MOUNTING HEIGHT MM	MOUNTING WIDTH IN	MOUNTING WIDTH MM	MOUNTING DEPTH IN	MOUNTING DEPTH MM
Oceanus DSC	# 4	FMB322B, FMB322W	2 3/8	61	6 5/8	168	6 1/2	165
Polaris	# 3	FMB321	2 1/4	57	6 1/8	156	6 11/16	170
Solara DSC	# 4	FMB322B, FMB322W	2 3/8	61	6 5/8	168	6 1/2	165
UM380	# 1	FMB321	2 1/16	53	5 11/16	145	4 5/16	110
UM385	# 1	FMB321	2 1/16	53	5 11/16	145	4 5/16	110
UM415	# 1	FMB321	2 1/16	53	5 11/16	145	4 5/16	110
UM425	# 1	FMB321	2 1/16	53	5 11/16	145	4 5/16	110
UM435	# 1	FMB321	2 1/16	53	5 11/16	145	4 5/16	110
UM525	# 2	FMB321	3 1/4	83	5 1/2	140	5 1/2	140
UM625	# 2	FMB321	3 1/4	83	5 1/2	140	5 1/2	140
V50 V50B	# 1	50FMB, 50FMW, FMB321	2 1/16	53	5 11/16	145	5 1/4	133
VHF500 VHF500B	# 1	500FMB, 500FMW, FMB321	2 1/16	53	5 11/16	145	5 1/4	133
V60, V60B	# 1	600FM, FMB321	2 1/16	53	5 11/16	145	5 1/4	133
VHF480	# 1	600FM, FMB321	2 1/16	53	5 11/16	145	4 5/16	110
VHF490	# 1	600FM, FMB321	2 1/16	53	5 11/16	145	4 5/16	110
VHF550	# 1	500FM, FMB321	2 1/16	53	5 11/16	145	5 1/4	133
VHF580	# 1	600FM, FMB321	2 1/16	53	5 11/16	145	4 5/16	110
VHF585	# 1	600FM, FMB321	2 1/16	53	5 11/16	145	4 5/16	110
VHF595	# 1	600FM, FMB321	2 1/16	53	5 11/16	145	4 5/16	110
VHF600	# 1	600FM, FMB321	2 1/16	53	5 11/16	145	5 1/4	133
VHF650	# 1	600FM, FMB321	2 1/16	53	5 11/16	145	4 5/16	110

The actual templates are on page 3. If you print the template page, do NOT select "Print to Scale." You must print actual size for the template to be accurate.

## ... or measure for yourself

Just measure the height, width, and depth behind the radio's mounting flange. (Be sure to measure the widest part of the radio; the bracket holes might be a little wider than the front of the radio.)

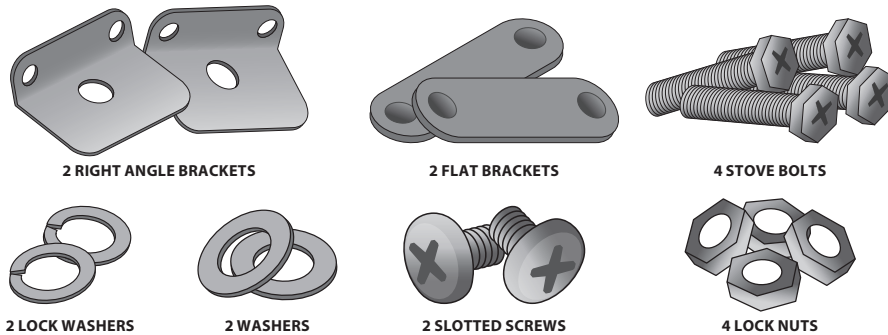


**Use the template (or the height and width) to cut the correct-sized hole for your radio.**

## Installing the radio

### 1) Make sure you have everything

Your flush-mount kit should contain the following hardware:



You'll also need

- a slotted (Phillips head) screwdriver
- pliers (or a wrench that fits the lock nuts)
- cutting tools appropriate for the material your dash is made of

### 2) Cut the hole where your radio should go

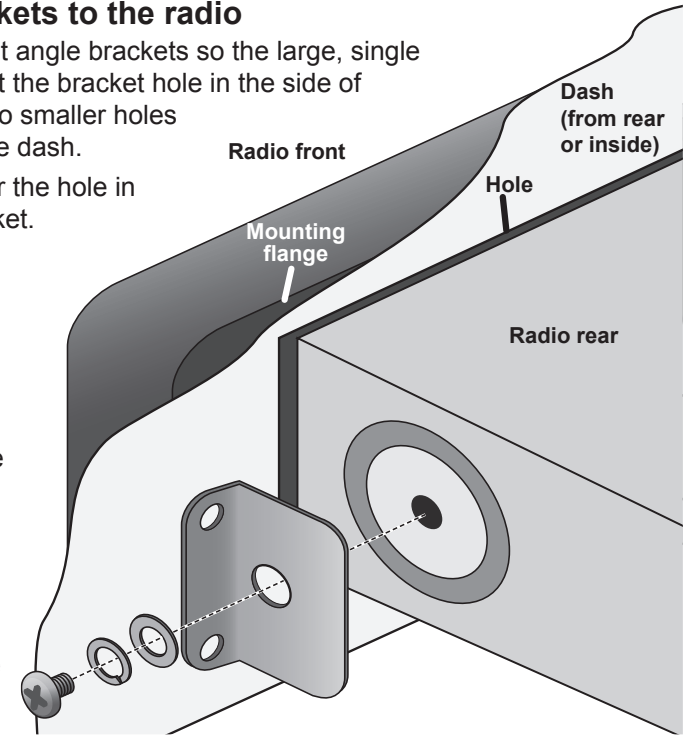
- Use the proper template or the mounting height and width to determine the size of the hole (see other side).
- Be sure there is enough room behind your dash for the mounting depth to fit (see other side).
- Be sure you can reach behind the dash to attach the brackets and screws. (You'll have to do this from the back, so make sure your hands can fit in the space once the radio is already in place.)
- Be sure the power and antenna cables will still reach once the radio is mounted.
- Be sure you use the recommended tools and follow all necessary safety precautions when cutting the hole in your dash (these will vary depending on the type of material, the thickness, etc.). Contact your boat's manufacturer or a professional installer if you aren't certain.

### 3) Insert the radio

Pass any cables through the hole, then insert the radio until the mounting flange is flush with the dash.

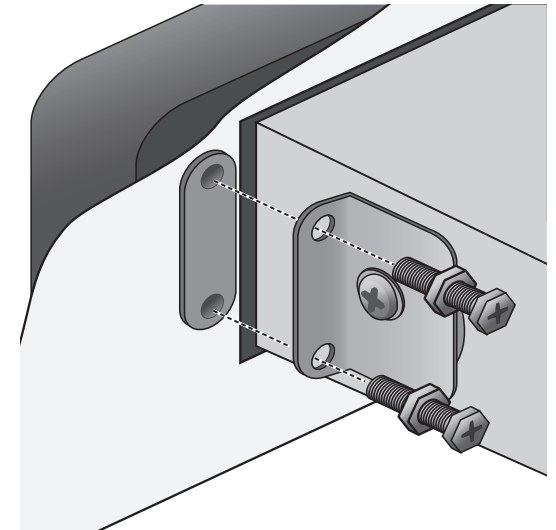
### 4) Attach the brackets to the radio

1. Align one of the right angle brackets so the large, single hole lays flat against the bracket hole in the side of the radio and the two smaller holes face the inside of the dash.
2. Place a washer over the hole in the right angle bracket.
3. Thread a slotted screw through a lock washer.
4. Insert the screw through the washer and bracket and into the bracket hole on the side of radio.
5. Tighten the screw securely.
6. Repeat this procedure to attach the other right angle bracket to the other side of the radio.



### 5) Secure the radio to the dash

1. Thread the lock nuts onto the stove bolts; turn them until they move up close to the bolt head.
2. Place the flat bracket against the dash and align the dimples with the holes in the right angle bracket.
3. Insert the bolts through the right angle bracket and into the dimples on the flat bracket, then tighten the bolts securely.
4. Move the lock nuts down the bolts until they touch the bracket.
5. Use pliers or a wrench to tighten the lock nuts against the bracket.
6. Repeat this procedure with the other right angle bracket.



# TEMPLATES

Just measure the height, width, and depth behind the radio's mounting flange. (Be sure to measure the widest part of the radio: the bracket holes might be a little wider than the front of the radio.)

## A NOTE ABOUT PRINTING THIS PAGE!

Be sure your printer is set to print at actual size. Do NOT select "Print to Scale."



