

### PACKAGE CONTENTS:



8 Channel NVR



USB Mouse



6 ft HDMI Cable



6 ft Ethernet Cable



12V Power Supply (4 or 8) Outdoor Cameras



(4 or 8) 100ft Cat5E Cables



Mounting Hardware

Check the web



Software and complete  
instruction manual available at  
[Uniden.com](http://Uniden.com)

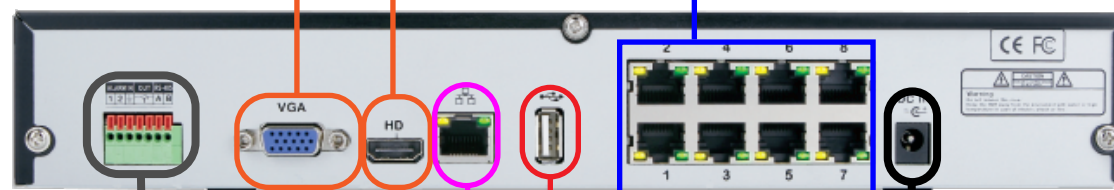
For best performance,  
use a 1080P monitor/TV  
and set the NVR system's  
output to 1920X1080.  
See the user guide  
for details.



**2** Monitor/TV\*

VGA OR HDMI

For connecting  
external alarm  
devices and  
Pan/Tilt/Zoom  
Camera control.  
See the user  
guide for details.



**3** Router\*



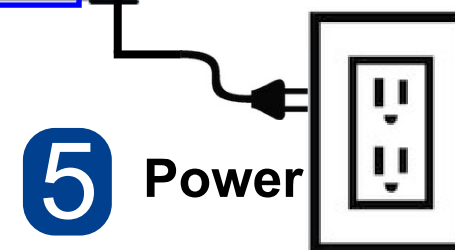
**4** Mouse



**1** Cameras

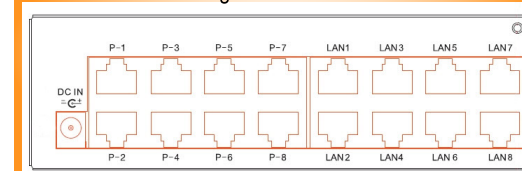
Cat5E Camera Cables must be a  
single stretch of cable between the  
system and camera.

**NOTE:**  
Connect each  
camera and cable  
to the NVR  
before installation  
to ensure proper  
operation.



**5** Power

- \*\*UNVR85x16 Model NVR System Back Panel
- 16 Channel video connections  
Connect to P1 through P8 for Power Over Ethernet



UNVR85x8 Receiver shown. UNVR85x16 is equipped with 16 video inputs.\*\*  
\*Not included.

## Start the NVR System

- Plug in the power supply.

The power indicator lights up, the system emits a single beep, and the preview screen displays.



The NVR's normal start-up mode is multi-screen, with each sub-screen showing a camera's view, or channel.

## Using the Mouse

### 1. Right Button

- Right click anywhere on the screen to open the Main Menu.
- Right click to exit.

### 2. Left Button

- Double-click an individual channel to view it in full screen; double-click again to return to the split-screen display mode.

### 3. Scroll Wheel

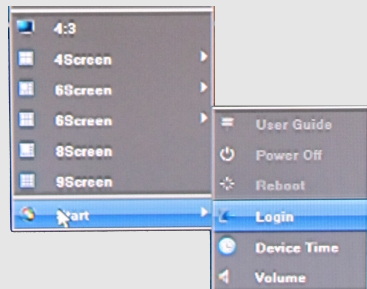
- Use the scroll wheel to zoom in or out.



## Login

Login to access the NVR System's key functions.

- Hover the cursor over **Start**. A sub menu displays.



- Click Login. The Login screen displays.



- Enter **admin** in the **User** field, leave **Password** blank, and click **Login**.

## Change Password

**NOTE:** It is strongly recommended that you add a password to your system.


- Right click the screen to display the Main Menu, then left click **Start>Setting**.
- Click **Account**.



User Name	Priority	IP combine	MAC combine
admin	Administrator	00:00:00:00:00:00	
default	Guest	00:00:00:00:00:00	

- Click **Modify User**, use the on-screen key pad to enter and confirm a password, then click OK.

## Set the System Time

- In the Setting Menu, click .
- Find **Device Time**, then click **Setting**.
- In the Date/Time Setting field, 2015-06-12 18:30:06, click on the right side of the desired value, then use the arrows to make the change.

## Network Setting

When the NVR connects to a router with Internet access, the router assigns an IP address to the NVR.

The NVR then connects to the Uniden P2P Cloud server to report its location. Now you can access the NVR remotely using the Uniden ProHD app or locally through the LAN with a computer.

### Locate the NVR's IP Address

- Right click the screen to display the **Main Menu**, then left click **Settings**. The **Settings** screen displays.
- Click **Network**.



The **Network Settings** screen displays with the IP Address shown in the second field from the top.



## Remote Access

View live and recorded video remotely through the NVR using an iOS or Android device.

- Go to your App Store, Search for Uniden ProHD and download the app.
- Select the U ProHD icon to open the app.

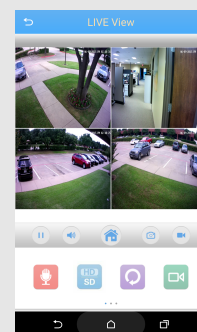
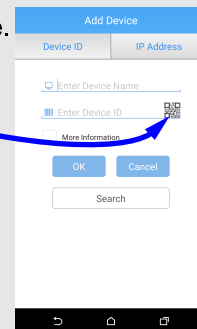
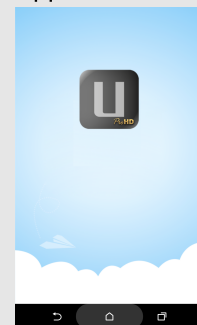
- Select Create Account, enter a User Name, password and your email address.

- Log in and select the **+** icon in the top right corner to add your NVR.

- Give your NVR a name.

- Select the QR code icon, then scan the QR code label on top of the NVR box. This adds the NVR Device ID code to the app.

- Select **OK**, select your new device, and live video displays on your phone.



Go to [Uniden.com](http://Uniden.com) to download the complete User Guide and to the ProHD product page to get the latest NVR firmware.