



Installation and Operating Guide

Model GV21

FOR YOUR
**ZENITH SOUND
REVERBERATION
SYSTEM**

General

Before installing the Zenith Sound Reverberation System, carefully read the installation instructions and follow the procedures for the specific model in which the system is to be installed. The GV21 Sound Reverberation kit may be used in the following models: G2780, G2786, G2787, G3388, H2781, H2786, SFF2503-1, SFF2504-1, SFF2505-1, SFF2603-1, SFF2604-1, SFF2605-1, SFF2607-1, SFF2535-1, SFH2502, SFH2503, SFH2504, SFH2505, SFH2602, SFH2603, SFH2604, SFH2605 and SFH2535.

Installation Instructions

REVERBERATION UNIT MOUNTING

1. Remove the cabinet back (if one is used on your set).
2. Mount each of the reverberator brackets to the reverberation unit as shown in Figures 1A or 1B (for G2786, G2787 and H2786 only), using four #8-18 x 5/16" slotted hex-head self-tapping screws.

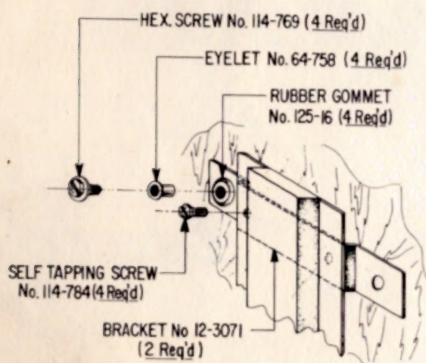


Figure 1A — Exploded View, Reverberator Bracket and Unit Mounting on Models G2780, G3388 and Stereo Phono Models

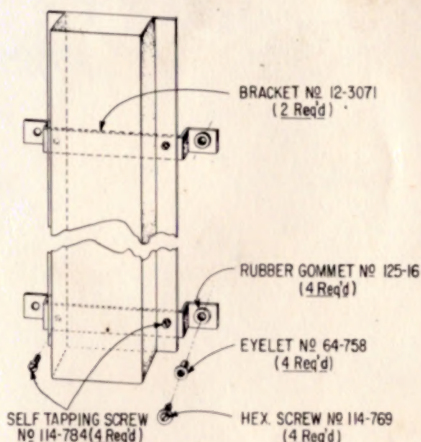


Figure 1B — Exploded View, Reverberator Bracket and Unit Mounting on Models G2786, G2787 and H2786

NOTE: Before mounting reverberation unit, remove wine-colored tape and plastic cushion strip.

3. Position the reverberation unit as shown in the applicable illustration covering the specific model in which the system is to be installed (Figures 2 through 5). Mount the unit as shown, using four rubber grommets, four eyelets, and four #8-15 x 5/8" slotted hex-head self-tapping screws. See Figure 1.

NOTE: When positioning the unit in the cabinet, be certain that the location of the input and output jacks is as shown.

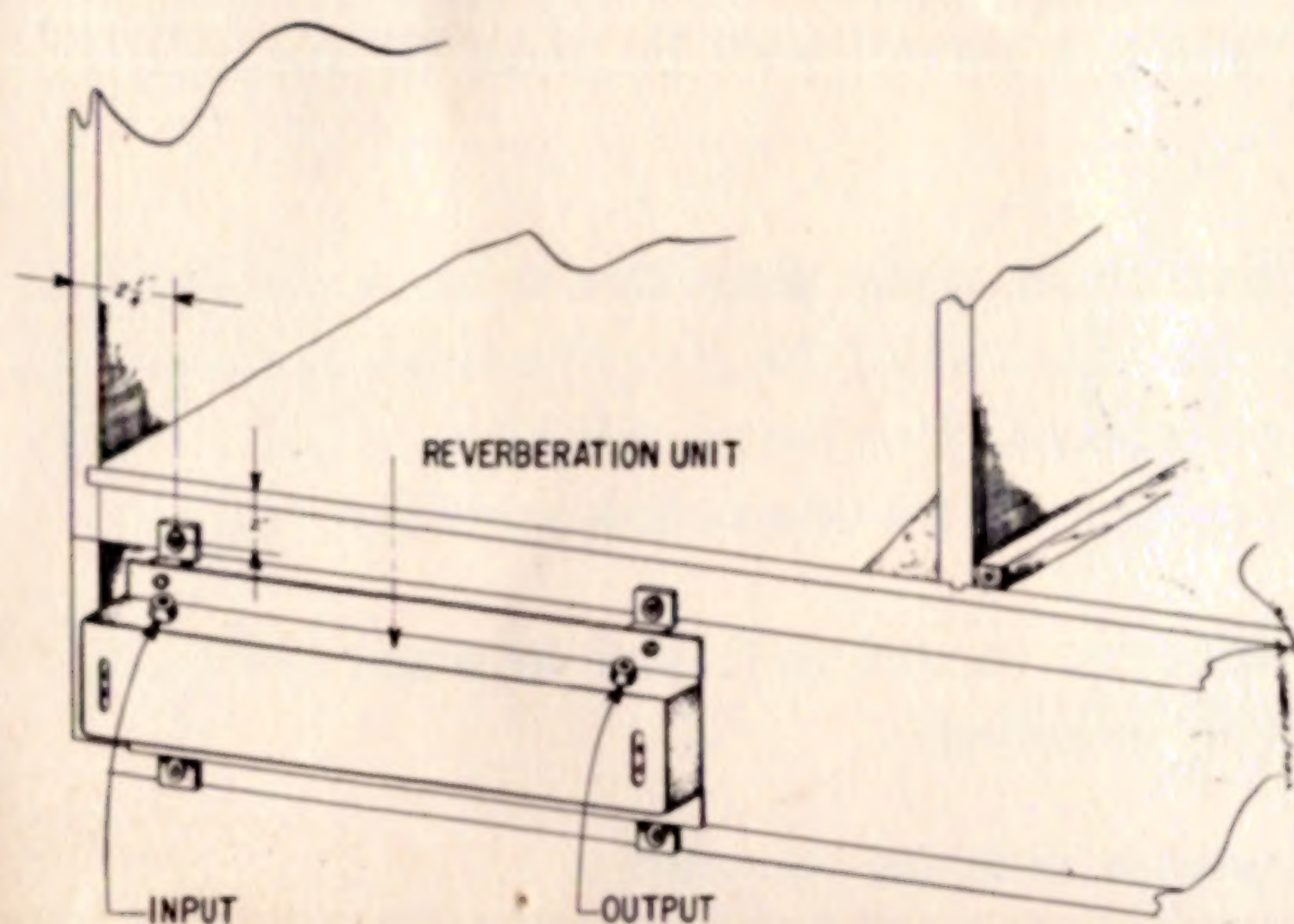


Figure 2 — Reverberation Unit Mounting on Models G2780 and H2781

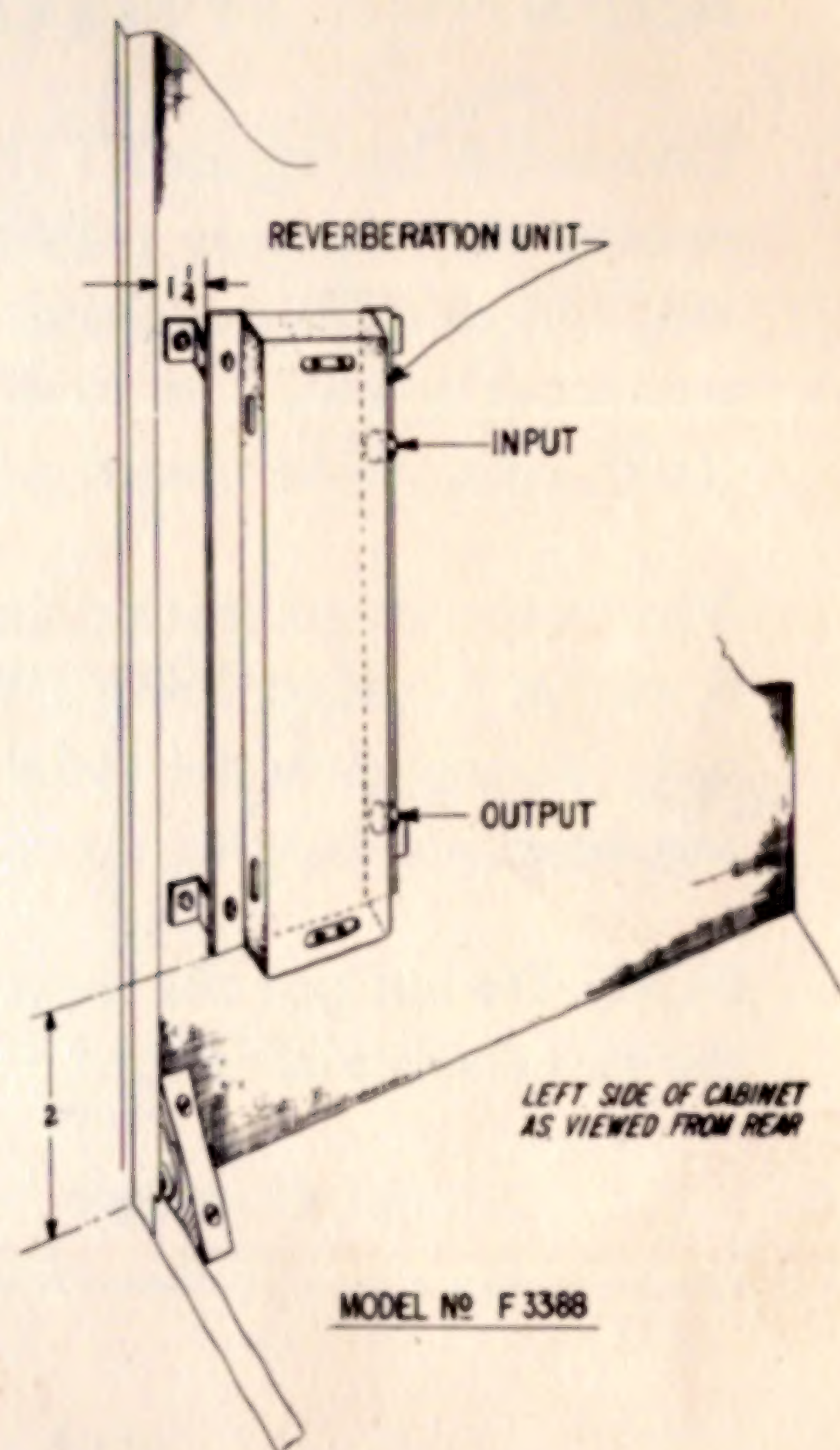


Figure 4 — Reverberation Unit Mounting on Model G3388

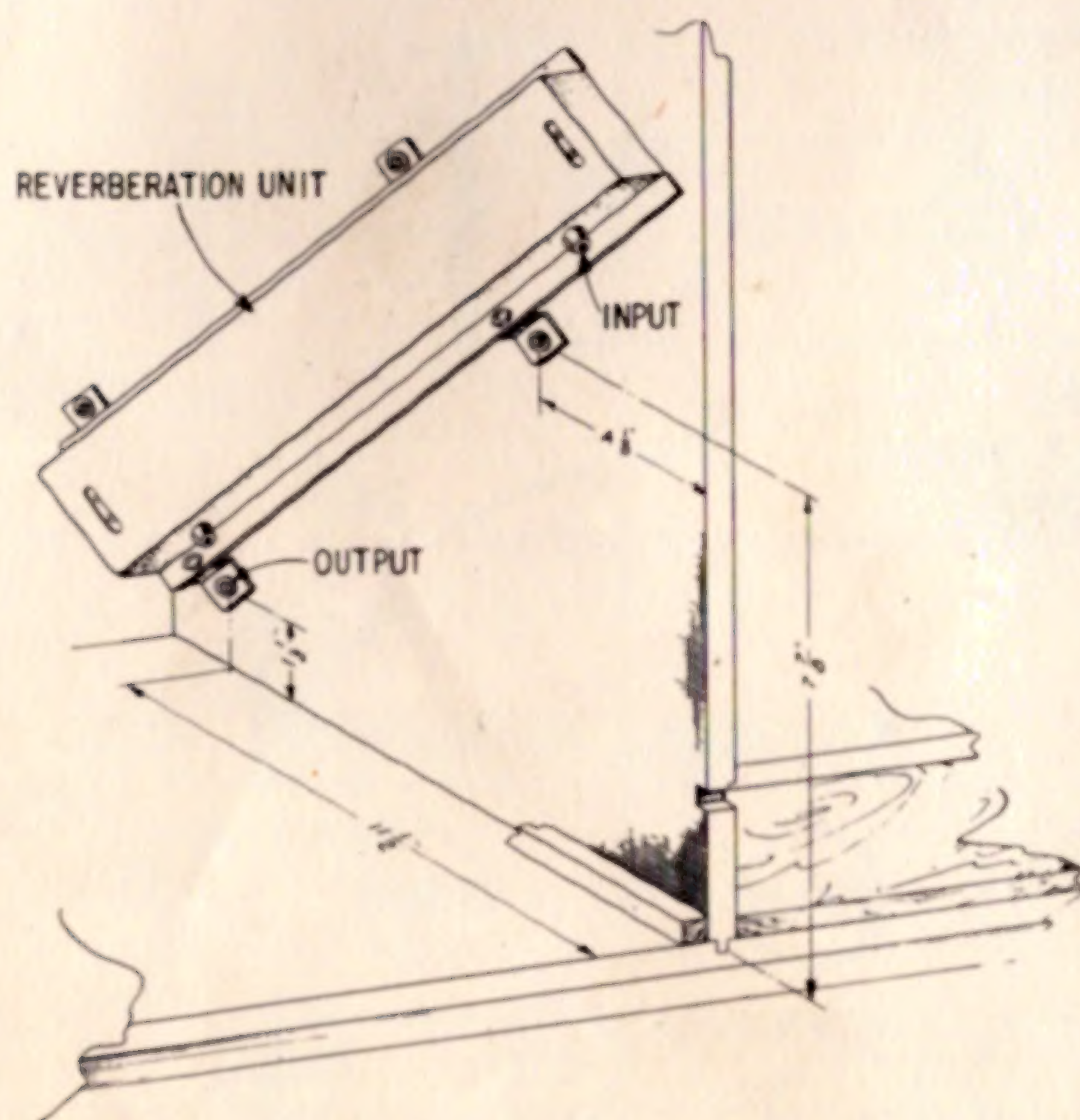


Figure 3 — Reverberation Unit Mounting on Models G2786, G2787 and H2786

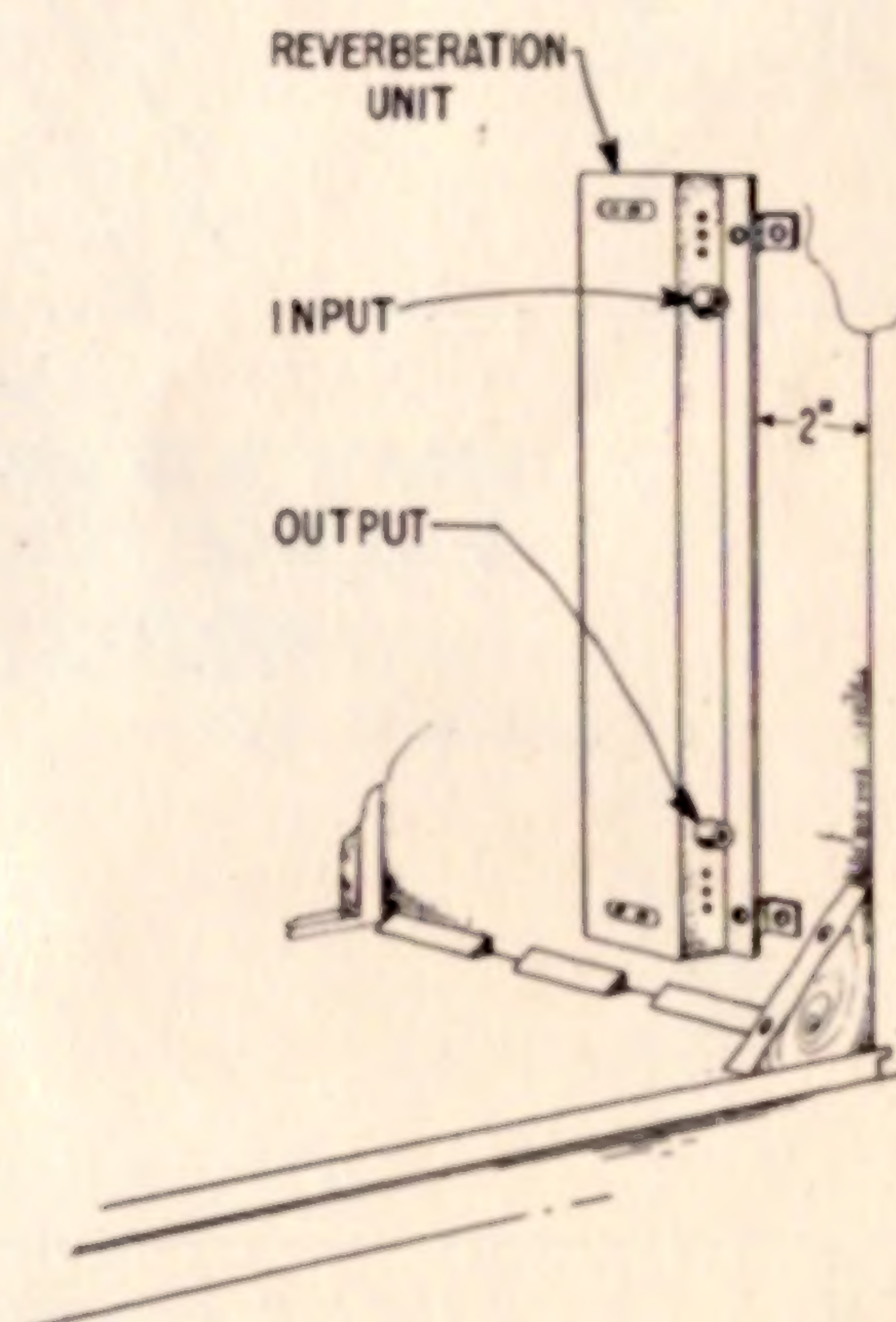


Figure 5 — Reverberation Unit Mounting on Models SFF2503-1, SFF2504-1, SFF2505-1, SFF2535-1, SFF2603-1, SFF2604-1, SFF2605-1, SFF2607-1, SFH2502, SFH2503, SFH2504, SFH2505, SFH2602, SFH2603, SFH2604, SFH2605 and SFH2535

MOUNTING REVERBERATION AMPLIFIER

On models having an FT11 or MHT-15 drop-in tuner, it will be necessary to remove the tuner to gain access to the chassis to which the reverberation amplifier is to be mounted. This is accomplished by removing the two tuner mounting screws. On models having a record well in place of the drop-in tuner, remove the record well.

Mount the reverberation amplifier to the audio amplifier as shown in Figure 6, *except* for Model SFF2535-1. On this model the reverberation amplifier is to be mounted to the radio tuner chassis. Use three #8-18 x 5/16" slotted hex-head self-tapping screws to mount the reverberation amplifier chassis.

NOTE: Do not put the drop-in tuner or record well back in place until after the reverberation control has been installed.

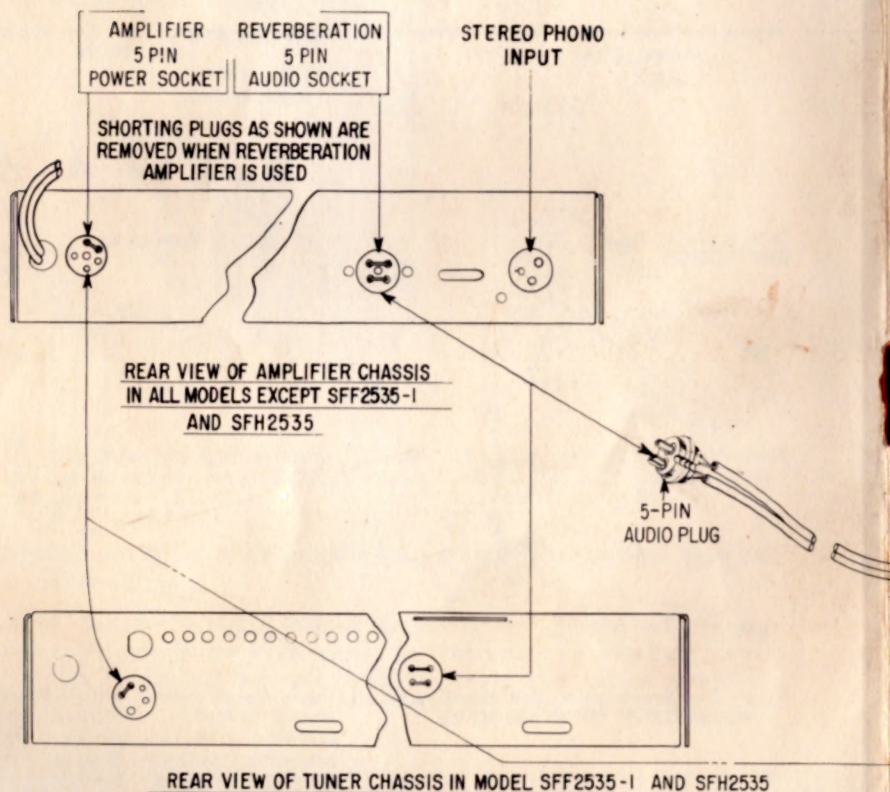


Figure 7—Inter-Chassis

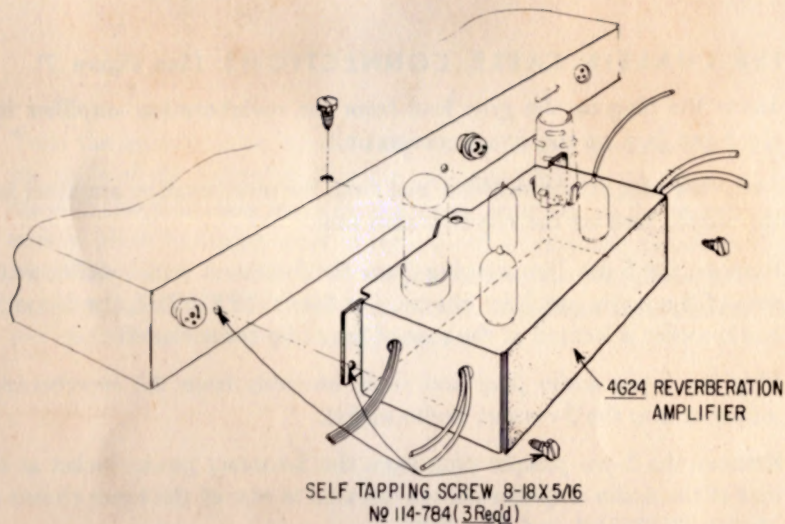
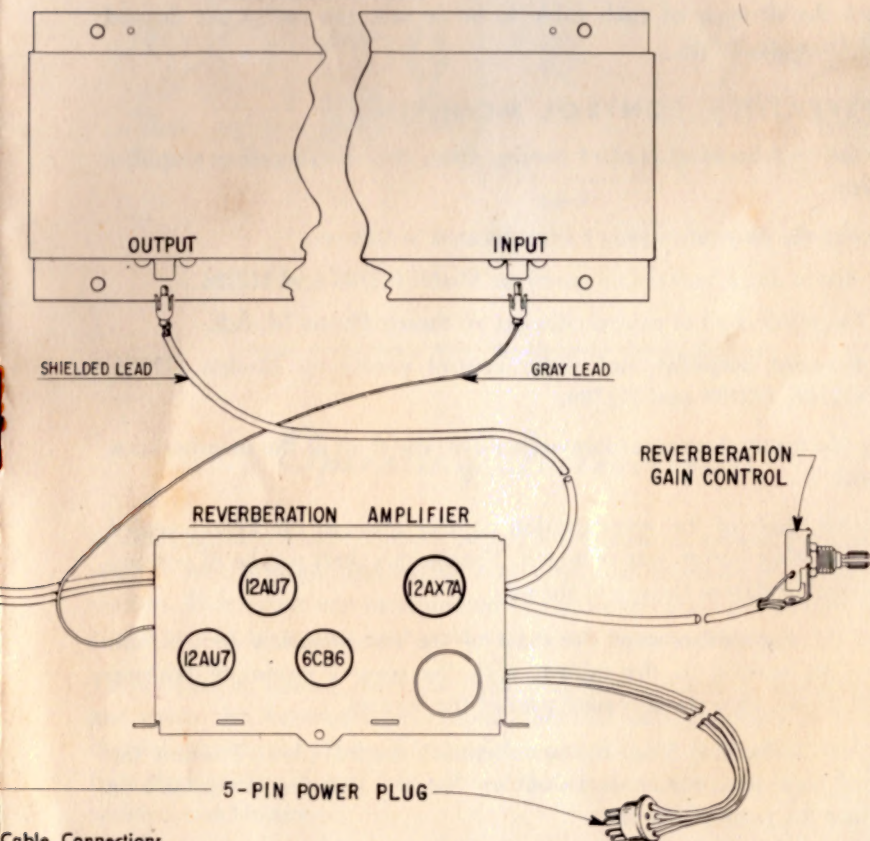


Figure 6—Mounting Reverberation Amplifier Chassis

REVERBERATION UNIT



Cable Connections

INTER-CHASSIS CABLE CONNECTIONS (See Figure 7)

1. Insert the plug on the gray lead from the reverberation amplifier into the input jack on the reverberation unit.
2. Insert the plug on the shielded lead from the reverberation amplifier into the output jack on the reverberation unit.
3. Remove the 5-pin jumper plug from the 5-contact audio socket at the rear of the audio amplifier chassis. On Model SFF2535-1, the 5-contact audio socket is located at the rear of the radio tuner chassis.
4. Plug the 5-pin audio plug and cable assembly from the reverberation amplifier into the 5-contact audio socket.
5. Remove the 5-pin jumper plug from the 5-contact power socket at the rear of the audio amplifier chassis (located at rear of the tuner chassis on Models SFF2535-1 and SFH2535).
6. Plug the 5-pin power plug and cable assembly from the reverberation amplifier into the 5-contact power socket.
7. Check the dressing of each cable to be certain the cables are dressed *away* from any tubes.

REVERBERATION CONTROL MOUNTING

Mount the reverberation control coming from the reverberation amplifier as follows:

1. Remove the decorative plug button located as follows:
 - (a) Above amplifier control panel on Model G2780 and H2781.
 - (b) On inside wall of record changer on Stereo Phono Models.
 - (c) Between amplifier and radio control panels on Models G2786, G2788, G3388 and H2786.
2. Place the internal-external lockwasher over the shaft of the reverberation control.
3. Push the shaft of the reverberation control through the hole revealed when the plug button was removed. The control shaft will be in position to be operated from the top of the set.
4. Place the flat washer over the shaft of the reverberation control and fasten the control to the cabinet with the control mounting bushing which screws onto the threaded part of the control.
5. Peel off the backing from the reverberation control plate. Position the control plate over the control shaft so that the lettering is readable as you face the front of the set.

6. Turn the reverberation control fully clockwise and position the knob on the shaft of the control so that the indicating marker on the knob lines up with the indicating mark on the lower right side of the reverberation control plate. Remount tuner or record well if previously removed. Check installation to be certain cables are properly connected, chassis are firmly in place, and tubes have not been jarred loose from their sockets; then put on cabinet back if previously removed.

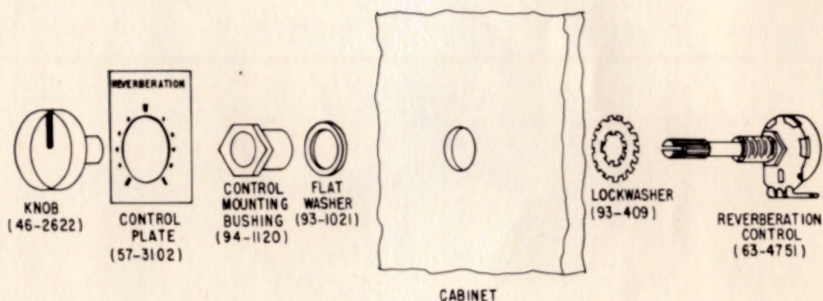


Figure 8—Exploded View, Reverberation Control Mounting

Operating Instructions

Zenith engineers have created a Sound Reverberation system that will give you the reverberation and spatial echo effects so necessary for concert hall realism. This system can be regulated by the Reverberation Control and will enable you to be master over your own home listening theater.

To operate the system, place the Monaural-Stereo switch in Stereo position and rotate the Reverberation control clockwise until you have attained the desired spatial echo effect. Rotating this control fully counter-clockwise will turn the reverberation system off and the equipment will operate normally without this feature.

Warranty

Zenith Radio Corporation warrants the parts and tubes in any Zenith radio receiver, phonographic reproducer or combination thereof to be free from defects in workmanship and material arising from normal usage. Its obligation under this warranty is limited to replacing any such parts or tubes of the receiver, reproducer or combination which, after regular installation and under normal usage and service, shall be returned within ninety (90) days from the date of original purchase of the set to the authorized dealer from whom the purchase was made and which shall be found to have been thus defective in accordance with the policies established by Zenith Radio Corporation.

The obligation of Zenith Radio Corporation is limited to making replacement parts available to the purchaser, and does not include either the making or the furnishing of any labor in connection with the installation of such replacement parts nor does it include responsibility for any transportation expense.

Zenith Radio Corporation assumes no liability and shall not be liable in any respect for failure to perform or delay in performing its obligations with respect to the above warranty if such failure or delay results, directly or indirectly, from any preference, priority or allocation order issued by the Government, or because of any other act of the Government, or by war, conditions of war, inadequate transportation facilities, conditions of weather, acts of God, strikes, lockouts, Governmental controls, or Zenith's reasonable requirements for manufacturing purposes, or any cause beyond its control or occurring without its fault, whether the same kind or not.

CONDITIONS AND EXCLUSIONS

This warranty is expressly in lieu of all other agreements and warranties, expressed or implied, and Zenith Radio Corporation does not authorize any person to assume for it the obligations contained in this warranty and neither assumes nor authorizes any representative or other person to assume for it any other liability in connection with such Zenith radio receiver, phonographic reproducer, combination or parts or tubes thereof.

The warranty herein extends only to the original consumer purchaser and is not assignable or transferable and shall not apply to any radio receiver, phonographic reproducer, combination or parts or tubes thereof which have been repaired or replaced by anyone else other than an authorized Zenith dealer, service contractor or distributor, or which have been subject to alteration, misuse, negligence or accident, or to the parts or tubes of any receiver which have had the serial number or name altered, defaced or removed.

ZENITH RADIO CORPORATION

6001 WEST DICKENS AVENUE

CHICAGO 39, ILLINOIS